

TABLE A, BUS BAR ASSEMBLIES

GROUND BUS BARS							
CURRENT RATING	RACK SIZE	DEPTH (X")	TYPE NUMBER	MODEL NUMBER	FIG.	RATING	
200 A	19"	5.125"	19PDG200	111B-2240-01	1	STD	
400 A	19"	5.250"	19PDG400	111B-2240-02	2		
400 A	19"	5.250"	19PDG400S	111B-2240-79	4		
600 A	19"	5.250"	19PDG600	111B-2240-03	3		
800 A	19"	5.250"	10PDG800	111B-2240-04	3	STD	
200 A	23"	5.125"	23PDG200	111B-2240-11	5		
400 A	23"	5.250"	23PDG400	111B-2240-12	6		
400 A	23"	5.250"	23PDG400S	111B-2240-89	8		
600 A	23"	5.250"	23PDG600	111B-2240-13	7		
800 A	23"	5.250"	23PDG800	111B-2240-14	7		
TERMINATION BUS BARS							
200 A	19"	7.125"	19PDT200	111B-2240-21	1		STD
400 A	19"	7.250"	19PDT400	111B-2240-22	2		
400 A	19"	7.250"	10PDT400S	111B-2240-80	4		
600 A	19"	7.250"	19PDT600	111B-2240-23	3		
800 A	19"	7.250"	19PDT800	111B-2240-24	3	STD	
200 A	23"	7.125"	23PDT200	111B-2240-31	5		
400 A	23"	7.250"	23PDT400	111B-2240-32	6		
400 A	23"	7.250"	23PDT400S	111B-2240-90	8		
600 A	23"	7.250"	23PDT600	111B-2240-33	7		
600 A	23"	7.250"	23PDT800	111B-2240-35	9		
800 A	23"	7.250"	23PDT800	111B-2240-34	7		
COMBINATION GROUND & TERMINATION BUS BARS							
200 A	19"	5.125"	19PDG200S	111B-2240-500	10	STD	
200 A	23"	5.125"	23PDG200S	111B-2240-510	11		

TABLE B

NO.	HOLE SIZE
A	0.281" DIA.
B	0.375" DIA.
C	0.406" DIA.
D	0.406" x 0.781" OBR.
E	0.531" x 0.875" OBR.

TABLE C

SINGLE HOLE LUG KIT		
WIRE RANGE GA	AMP RATING	RATELCO PART NUMBER
14 TO 6	35	253-2010-00
14 TO 2	90	253-2020-00
8 TO 1/0	125	253-2030-00
6 TO 250MCM	225	253-2040-00
1/0 TO 350MCM	300	253-2045-00
1/0 TO 500MCM	400	253-2050-00
4/0 TO 1000MCM	650	253-2060-00
TWO HOLE LUG KIT		
14 TO 6	35	253-0035-00
8 TO 2	70	253-0036-00
2 TO 1/0	125	253-0037-00
2 TO 4/0	225	253-0038-00
1/0 TO 350MCM	300	253-0039-00
1/0 TO 500MCM	400	253-0041-00
600 TO 1000MCM	650	253-0041-00

NOTES:


- 1) A MINIMUM OF ONE RACK SPACE (1.750") MUST BE PROVIDED BETWEEN EACH BUS BAR AND AN ADJOINING PIECE OF EQUIPMENT.
- 2) 200 AMP AND 400 AMP BUS BARS REQUIRE ONE RACK SPACE (1.750"). 600 AMP AND 800 AMP BUS BARS REQUIRE TWO RACK SPACES (3.500").
- 3) ALL BUS BARS ARE DESIGNED FOR SINGLE OR DOUBLE HOLE MOUNTING LUGS. ORDER LUG KITS FROM TABLE C.
- 4) ALL GROUND AND TERMINATION BUS BARS ARE COPPER AND ARE INSULATED BY ONE INCH FIBERGLASS SPACERS.

SHEET INDEX

SH NO	1	2	3
ISSUE	5	5	4

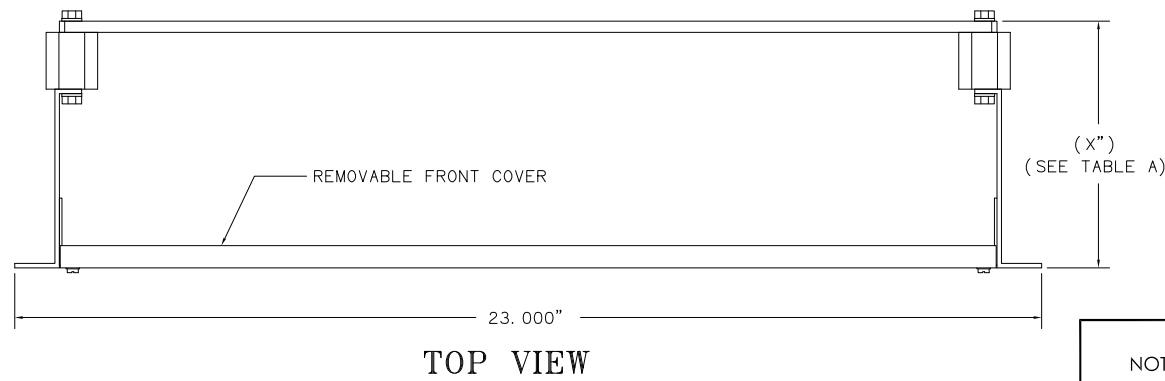
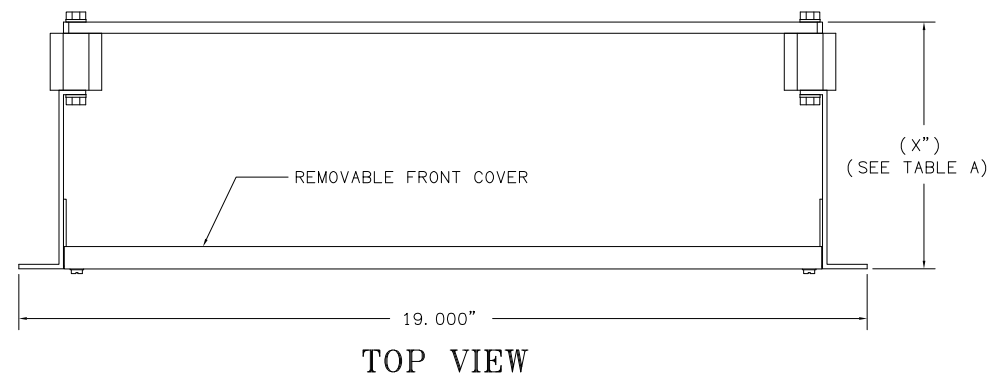
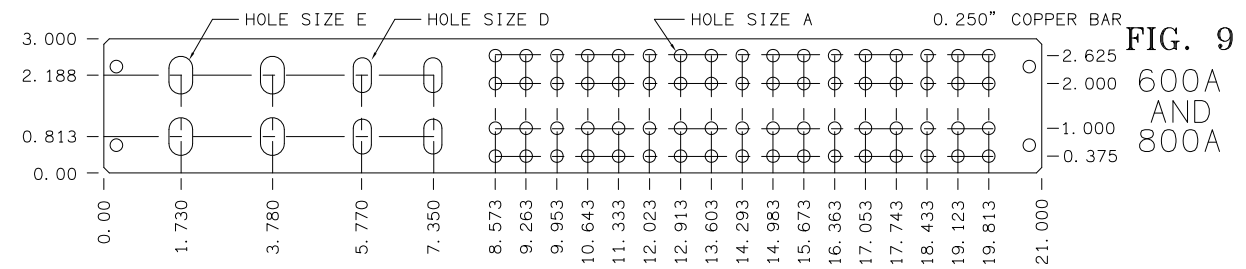
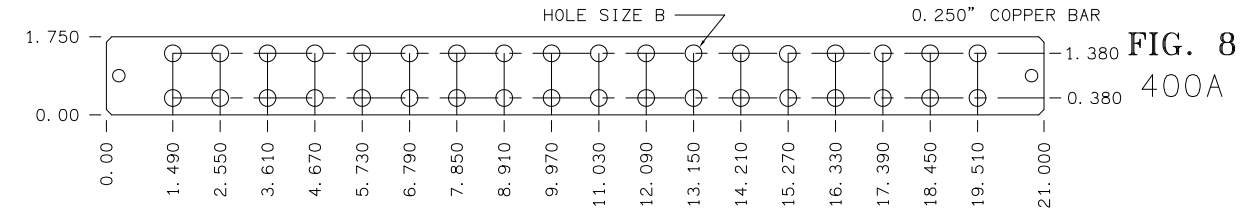
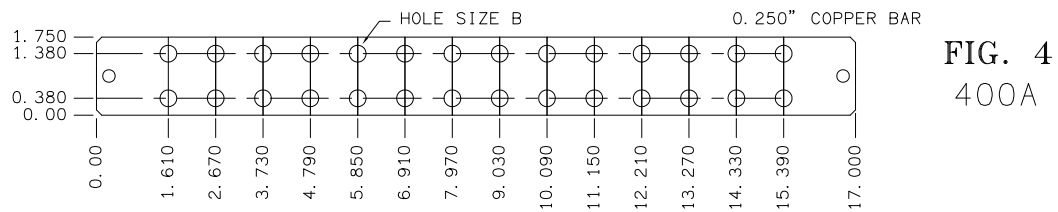
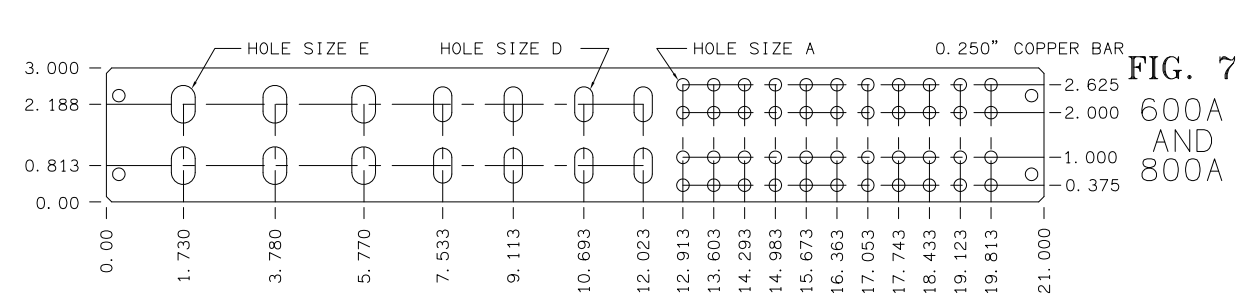
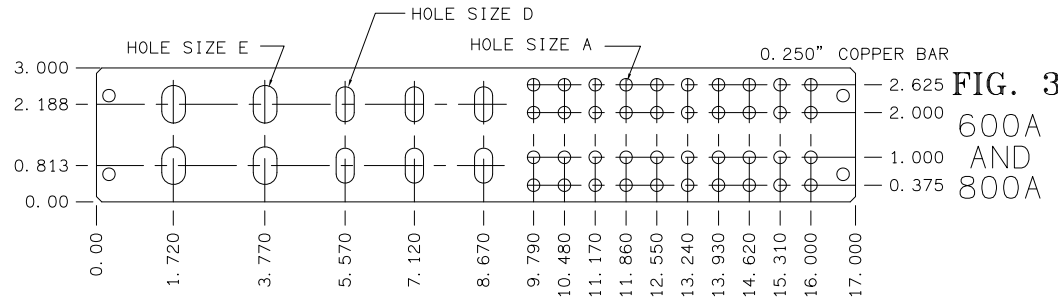
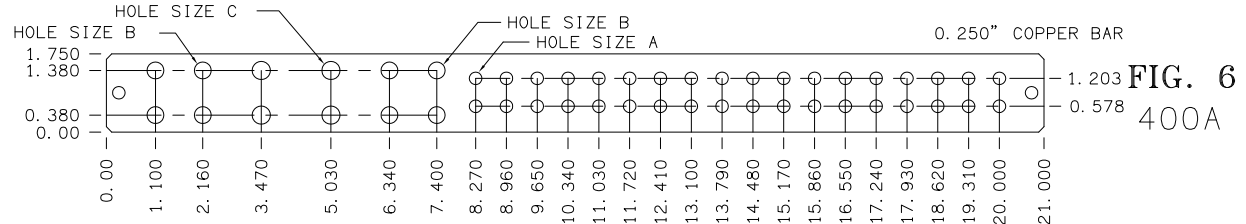
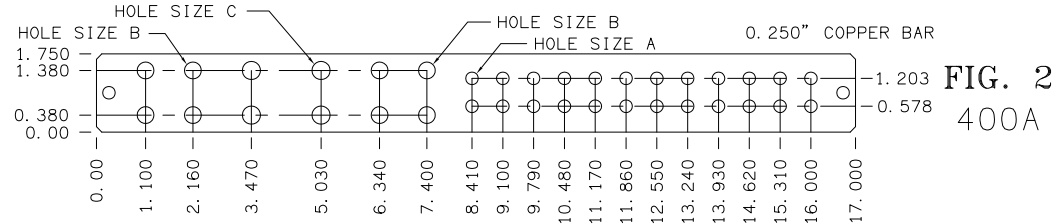
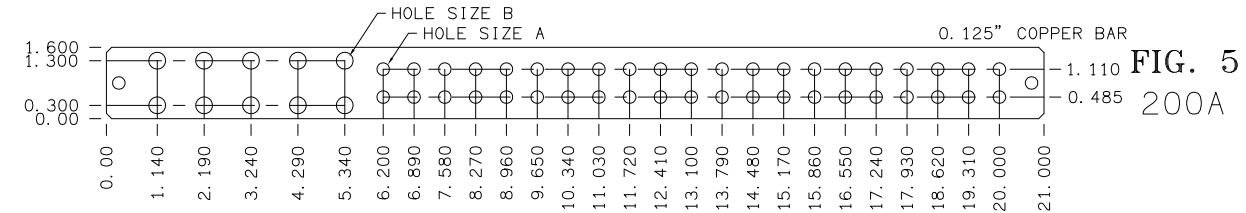
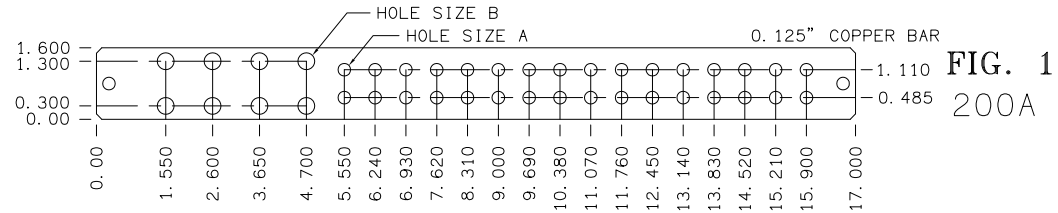
ISSUES

ISSUE #	DESCRIPTION	ISS. BY ISS. DATE	APP. BY APP. DATE
4	ADD 111B-2240-35 BUS BAR (FIG. 9)	IY 01/11/99	IY 01/11/99
5	SEE ECN 20049 UPDATED FORMAT LOGO FROM: C&D TO: UNIPOWER	KEL 01/29/15	DBW 2/2/15

UNLESS OTHERWISE SPECIFIED DIMENSIONS ARE IN INCHES ± TOLERANCES ON:	APPROVALS	DATE
	DRAWN IY	01/11/99
	CHECKED	
	APPROVED	
HOLES	+0.004 -0.002	
FRACTIONS	±1/32	
DECIMALS (xx)	±0.020	
DECIMALS (xxx)	±0.010	
ANGLES	±1/2'	01/11/99
SQUARE CORNERS AND ANGLES ARE 90° UNLESS OTHERWISE SPECIFIED.		
WORKMANSHIP: PER SPEC ENG032		
MATERIAL:		
FINISH:		
PROPRIETARY INFORMATION NOT TO BE COPIED, USED, TRANSMITTED, OR DISCLOSED WITHOUT PRIOR WRITTEN PERMISSION FROM UNIPOWER, LLC.		
 <p>UNIPOWER Powering Technology</p>		
BUS BARS 200 AMP - 800 AMP		
SIZE B	DOC TYPE / NUMBER J 111B-2240	ISSUE 5
SCALE: NONE	SHEET: 1 OF 3	FILE NAME: J111B-2240_SHT_1_ISS_5

19" BUS BARS

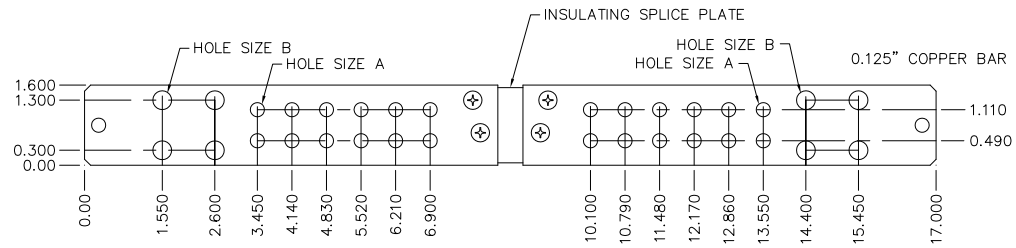
23" BUS BARS



PROPRIETARY INFORMATION NOT TO BE COPIED, USED, TRANSMITTED, OR DISCLOSED WITHOUT PRIOR WRITTEN PERMISSION FROM UNIPOWER, LLC.		
SIZE B	DOC TYPE / NUMBER J 111B-2240	ISSUE 5
SCALE: NONE	SHEET: 2 OF 3	FILE NAME: J111B-2240_SHT_2_ISS_5

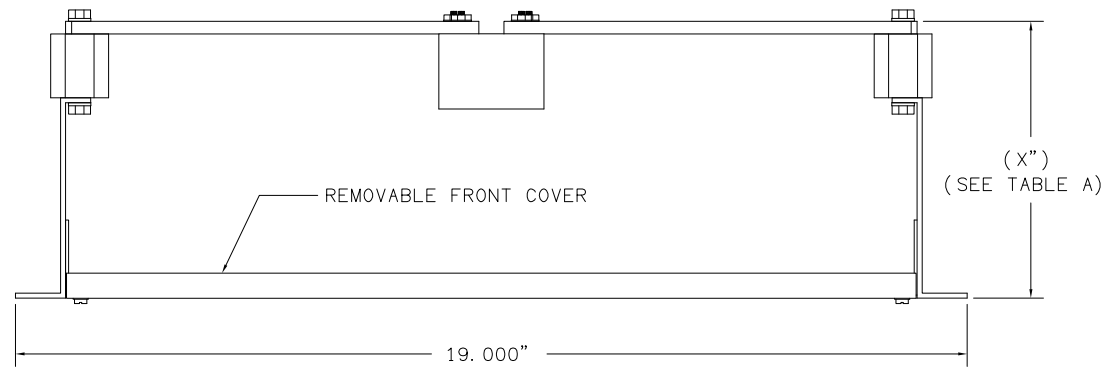
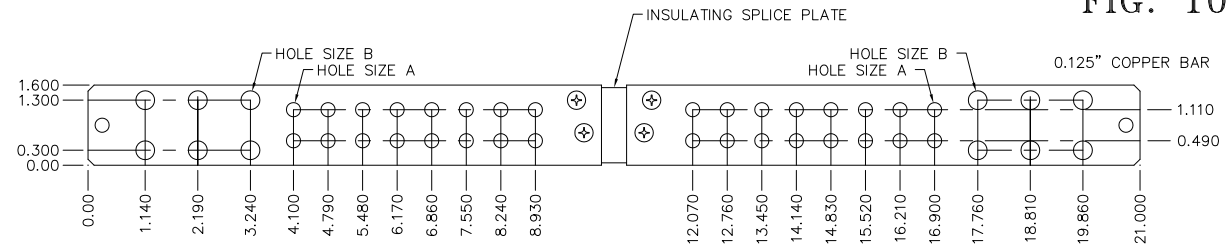
19" BUS BAR ASSEMBLY

FIG. 9

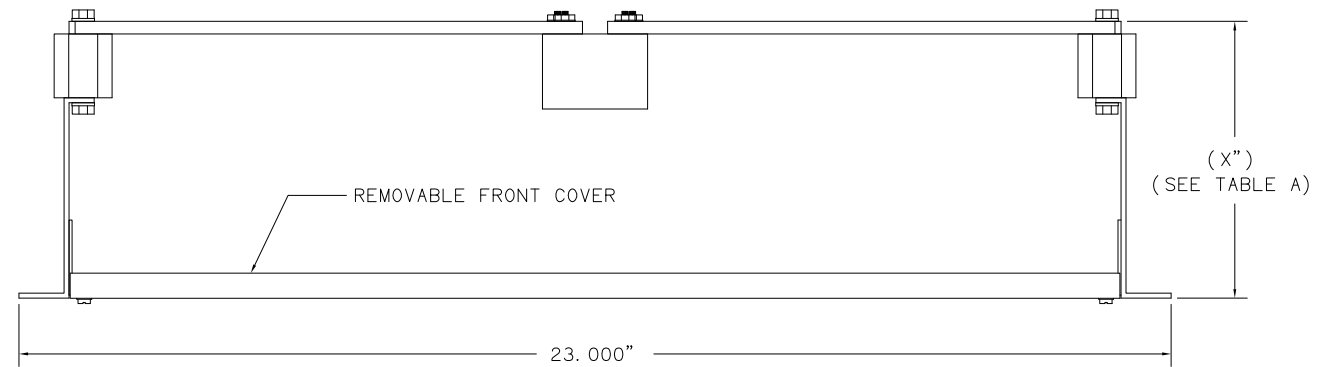


23" BUS BAR ASSEMBLY

FIG. 10



TOP VIEW



TOP VIEW

PROPRIETARY INFORMATION NOT TO BE COPIED, USED, TRANSMITTED, OR DISCLOSED WITHOUT PRIOR WRITTEN PERMISSION FROM UNIPOWER, LLC.		
SIZE B	DOC TYPE / NUMBER J 111B-2240	ISSUE 4
SCALE: NONE	SHEET: 3 OF 3	FILE NAME: J111B-2240_SHT_3_ISS_4