

ENGINEERING NOTES:

- 51. PANEL CAN BE MOUNTED IN A 19 OR 23 INCH RACK BY PROPER PLACEMENT OF MOUNTING BRACKET.
- 52. EACH BREAKER IS EQUIPPED WITH AN INTERGRAL SPDT (SINGLE POLE DOUBLE THROW) AUXILIARY SWITCH OR ALARM SWITCH. USE 20 GAUGE MINIMUM FOR ALARM WIRING.
- 53. STANDARD PAINT COLOR IS ANSI 61 GRAY.
- 54. INPUT AND OUTPUT BUS BAR IS SUPPLIED WITH THE PANEL. SEE TABLE A.

MANUFACTURING NOTES:

- 101. ANTI-OXIDATION COATING WILL BE APPLIED BETWEEN ALL LAYERS OF LAMINATED COPPER BUS STRUCTURE. A COMPOUND SUCH AS CRAMOLIN 81Rh WILL BE APPLIED TO ALL JOINTED FLAT CONDUCTIVE SURFACES PER THE MANUFACTURER'S INSTUCTIONS.
- 102. APPLY LABEL "BATT" TO LINE SIDE OF BREAKER AND "LOAD" TO LOAD SIDE OF BREAKER, P/N 225-2601-00.

TABLE A

PANEL PART NUMBER	AMP RATED	BREAKER PART NUMBER	RATING	W/BUS BAR	SWITCH TYP
111-2916-05	50	271-0915-00	STD	NO	AUX SW
111-2916-10	100	271-0921-00	STD	NO	AUX SW
111-2916-15	150	271-1021-00	STD	YES	AUX SW
111-2916-20	200	271-1023-05	STD	YES	AUX SW
111-2916-25	250	271-1031-00	STD	YES	AUX SW
111-2916-11	100	271-1011-00	STD	NO	ALR SW
111-2916-16	150	271-1018-00	STD	YES	ALR SW
111-2916-21	200	271-1023-10	STD	YES	ALR SW
111-2916-26	250	271-1033-00	STD	YES	ALR SW

ISSUES

ISSUE #	DESCRIPTION	ISS. BY ISS. DATE	APP. BY APP. DATE
8	SEE ECN 20054. UPDATED LOGO/VERBIAGE TO STATE UNIPOWER.	WD 2/2/15	DBW 2/2/15

UNLESS OTHERWISE SPECIFIED DIMENSIONS ARE IN INCHES ± TOLERANCES ON:	APPROVALS	DATE
HOLES +0.004 -0.002	DRAWN PKD	4/5/85
FRACTIONS ±1/32	CHECKED BW	4/7/85
DECIMALS (XX) ±0.020	APPROVED	
DECIMALS (XXX) ±0.010	APPROVED	
ANGLES ±1/2'		

SQUARE CORNERS AND ANGLES ARE 90° UNLESS OTHERWISE SPECIFIED.

WORKMANSHIP:
PER SPEC ENG032

MATERIAL:

FINISH:

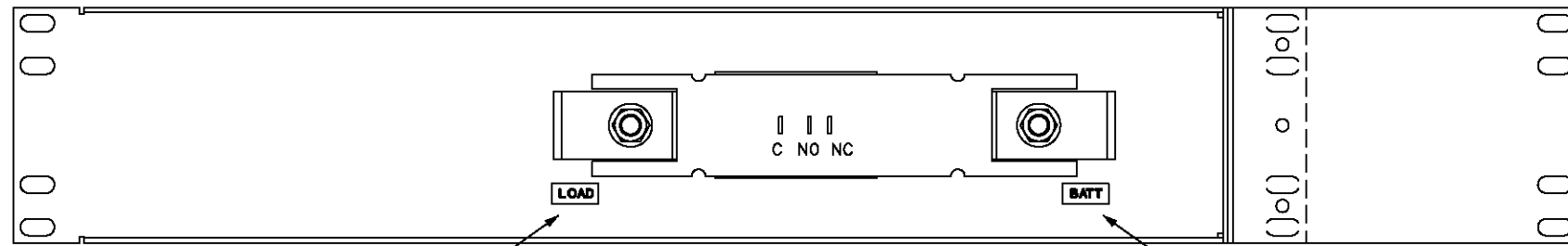
PROPRIETARY INFORMATION
NOT TO BE COPIED, USED, TRANSMITTED, OR DISCLOSED WITHOUT
PRIOR WRITTEN PERMISSION FROM UNIPOWER, LLC.



BATTERY/LOAD DISCONNECT
CIRCUIT BREAKER PANEL

SIZE B	DOC TYPE / NUMBER PN 111-2916	ISSUE 8
---------------	----------------------------------	------------

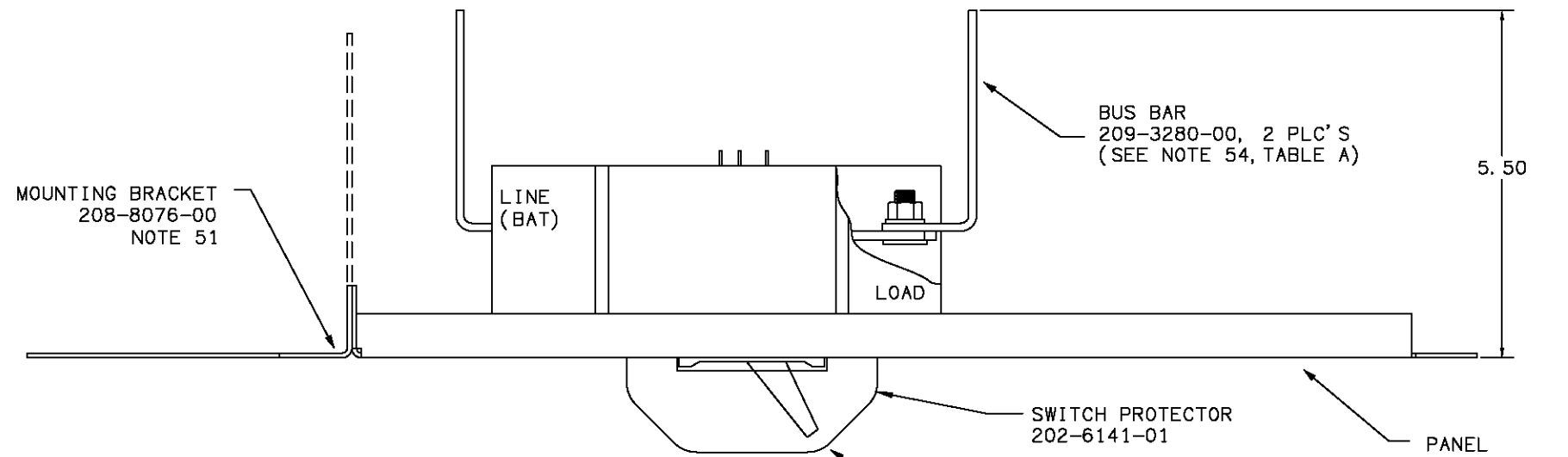
SCALE: N/A	SHEET: 1 OF 2	FILE NAME: PN111-2916_ISS_8
---------------	------------------	--------------------------------



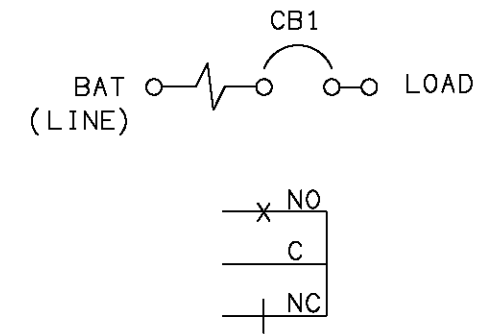
(SEE NOTE 102)

REAR VIEW
(111-2916-25 SHOWN)

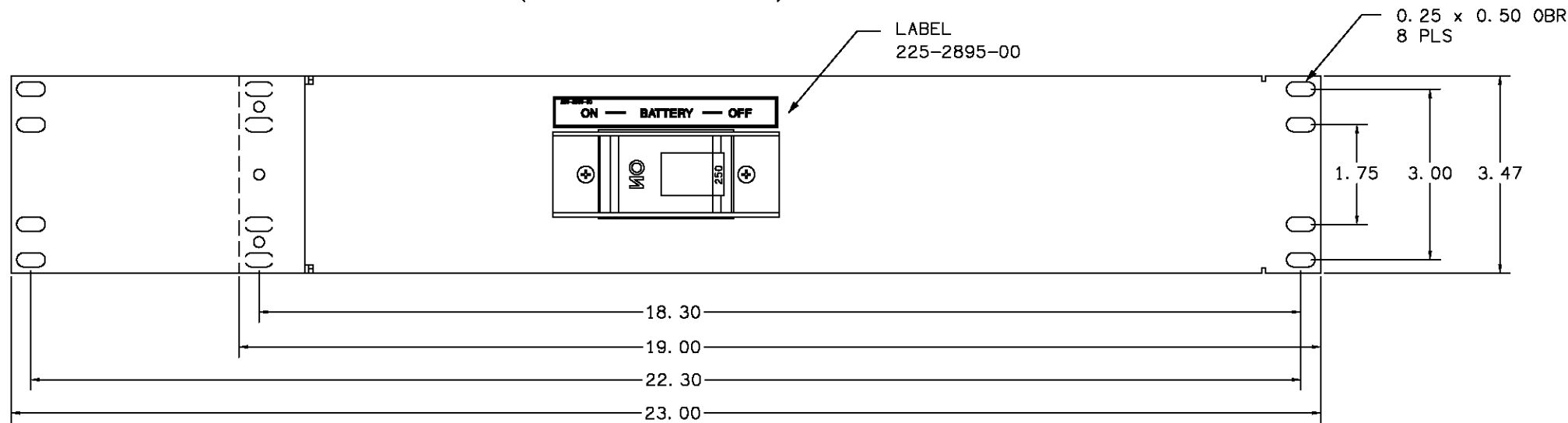
(SEE NOTE 102)



TOP VIEW
(111-2916-25 SHOWN)



SCHEMATIC DIAGRAM



FRONT VIEW
(111-2916-25 SHOWN)

PROPRIETARY INFORMATION NOT TO BE COPIED, USED, TRANSMITTED, OR DISCLOSED WITHOUT PRIOR WRITTEN PERMISSION FROM UNIPOWER, LLC.		
SIZE B	DOC TYPE / NUMBER PN 111-2916	ISSUE 8
SCALE: N/A	SHEET: 2 OF 2	FILE NAME: PN111-2916_ISS_8