



**BATTERY DISCONNECT
PANEL
PRODUCT MANUAL FOR
P/N 111-2916**

PM 990-2916-00, Issue 6

UNIPOWER, LLC
3900 Coral Ridge Drive
Coral Springs, FL 33065
Phone: +1-954-346-2442
Toll Free: 1-800-440-3504
Web site – <http://www.unipowerco.com>

RECEIVING INSTRUCTIONS & GENERAL EQUIPMENT INFORMATION

Please Note: For your protection, the following information and the product manual should be read and thoroughly understood before unpacking, installing, or using the equipment.

UNIPOWER, LLC presents all equipment to the delivering carrier securely packed and in perfect condition. Upon acceptance of the package from us, the delivering carrier assumed responsibility for its safe arrival to you. Once you receive the equipment, it is your responsibility to document any damage the carrier may have inflicted, and to file your claim promptly and accurately.

1. PACKAGE INSPECTION

- 1.1** Examine the shipping crate or carton for any visible damage: punctures, dents, and any other signs of possible internal damage.
- 1.2** Describe any damage or shortage on the receiving documents, and have the carrier sign their full name.
- 1.3** If your receiving freight bill notes that a Tip-N-Tell is attached to your freight, locate it. If the Tip-N-Tell arrow has turned even partially blue, this means the freight has been tipped in transport. Make sure the carrier notes this on your receipt before you sign for the freight.

2. EQUIPMENT INSPECTION

- 2.1** Within fifteen days, open the crate and inspect the contents for damages. While unpacking, be careful not to discard any equipment, parts, or manuals. If any damage is detected, call the delivering carrier to determine appropriate action. They may require an inspection.

***SAVE ALL SHIPPING MATERIAL FOR THE INSPECTOR TO SEE!**

- 2.2** After the inspection has been made, call UNIPOWER. We will determine if the equipment should be returned to our plant for repair, or if some other method would be more expeditious. If it is determined that the equipment should be returned to UNIPOWER, ask the delivering carrier to send the packages back to UNIPOWER at the delivering carrier's expense.
- 2.3** If repair is necessary, we will invoice you for the repair so that you may submit the bill to the delivering carrier with your claim form.
- 2.4** It is your responsibility to file a claim with the delivering carrier. Failure to properly file a claim for shipping damages may void warranty service for any physical damages later reported for repair.

3. HANDLING

Equipment can be universally heavy or top-heavy. Use adequate humanpower or equipment for handling. Until the equipment is securely mounted, be careful to prevent the equipment from being accidentally tipped over.

4. NAMEPLATE

Each piece of UNIPOWER equipment is identified by a part number on the nameplate. Please refer to this number in all correspondence with UNIPOWER.

5. INITIAL SETTINGS

All equipment is shipped from our production area *fully checked and adjusted*. Do not make any adjustments until you have referred to the technical reference or product manual.

6. SPARE PARTS

To minimize downtime during installation or operation, we suggest you purchase spare fuses, circuit boards and other recommended components as listed on the Recommended Spare Parts List in the back of the product manual. If nothing else, we strongly recommend stocking spare fuses for all systems.

ISSUE HISTORY

ISSUE	PAGE(S)	DESCRIPTION	ISSUED BY /DATE
6	All	Updated UNIPOWER logo & contact information. See PCO# 44417	WD 6/12/17

PROPRIETARY AND CONFIDENTIAL

The information contained in this product manual is the sole property of UNIPOWER, LLC. Reproduction of the manual or any portion of the manual without the written permission of UNIPOWER, LLC is prohibited.

© Copyright UNIPOWER, LLC 2015

DISCLAIMER

Data, descriptions, and specifications presented herein are subject to revision by UNIPOWER, LLC without notice. While such information is believed to be accurate as indicated herein, UNIPOWER, LLC makes no warranty and hereby disclaims all warranties, express or implied, with regard to the accuracy or completeness of such information. Further, because the product(s) featured herein may be used under conditions beyond its control, UNIPOWER, LLC hereby disclaims and excludes all warranties, express, implied, or statutory, including any warranty of merchantability, any warranty of fitness for a particular purpose, and any implied warranties otherwise arising from course of dealing or usage of trade. The user is solely responsible for determining the suitability of the product(s) featured herein for user’s intended purpose and in user’s specific application.

Throughout the remainder of this manual, “UNIPOWER” will mean “UNIPOWER, LLC.”

PERSONNEL REQUIREMENTS

Installation, setup, operation, and servicing of this equipment should be performed by qualified persons thoroughly familiar with this Product Manual and Applicable Local and National Codes. A copy of this manual is included with the equipment shipment.

ENGINEERING NOTES:

- 51. PANEL CAN BE MOUNTED IN A 19 OR 23 INCH RACK BY PROPER PLACEMENT OF MOUNTING BRACKET.
- 52. EACH BREAKER IS EQUIPPED WITH AN INTERGRAL SPDT (SINGLE POLE DOUBLE THROW) AUXILIARY SWITCH OR ALARM SWITCH. USE 20 GAUGE MINIMUM FOR ALARM WRING.
- 53. STANDARD PAINT COLOR IS ANSI 61 GRAY.
- 54. INPUT AND OUTPUT BUS BAR IS SUPPLIED WITH THE PANEL. SEE TABLE A.

MANUFACTURING NOTES:

- 101. ANTI-OXIDATION COATING WILL BE APPLIED BETWEEN ALL LAYERS OF LAMINATED COPPER BUS STRUCTURE. A COMPOUND SUCH AS CRAMOLIN 81Rh WILL BE APPLIED TO ALL JOINTED FLAT CONDUCTIVE SURFACES PER THE MANUFACTURER'S INSTUCTIONS.
- 102. APPLY LABEL "BATT" TO LINE SIDE OF BREAKER AND "LOAD" TO LOAD SIDE OF BREAKER, P/N 225-2601-00.

TABLE A

PANEL PART NUMBER	AMP RATED	BREAKER PART NUMBER	RATING	W/BUS BAR	SWITCH TYP
111-2916-05	50	271-0915-00	STD	NO	AUX SW
111-2916-10	100	271-0921-00	STD	NO	AUX SW
111-2916-15	150	271-1021-00	STD	YES	AUX SW
111-2916-20	200	271-1023-05	STD	YES	AUX SW
111-2916-25	250	271-1031-00	STD	YES	AUX SW
111-2916-11	100	271-1011-00	STD	NO	ALR SW
111-2916-16	150	271-1018-00	STD	YES	ALR SW
111-2916-21	200	271-1023-10	STD	YES	ALR SW
111-2916-26	250	271-1033-00	STD	YES	ALR SW

ISSUES

ISSUE #	DESCRIPTION	ISS. BY ISS. DATE
9	UPDATED UNIPOWER LOGO. SEE PCO# 44417	WD 6/12/17

UNLESS OTHERWISE SPECIFIED DIMENSIONS ARE IN INCHES TOLERANCES ON:		APPROVALS	DATE
±		DRAWN PKD	4/5/85
HOLES	+0.004 -0.002	CHECKED BW	4/7/85
FRACTIONS	±1/32	APPROVED	
DECIMALS (XX)	±0.020	APPROVED	
DECIMALS (XXX)	±0.010		
ANGLES	±1/2'		

SQUARE CORNERS AND ANGLES ARE 90° UNLESS OTHERWISE SPECIFIED.
 WORKMANSHIP:
 PER SPEC ENG032
 MATERIAL:
 FINISH:

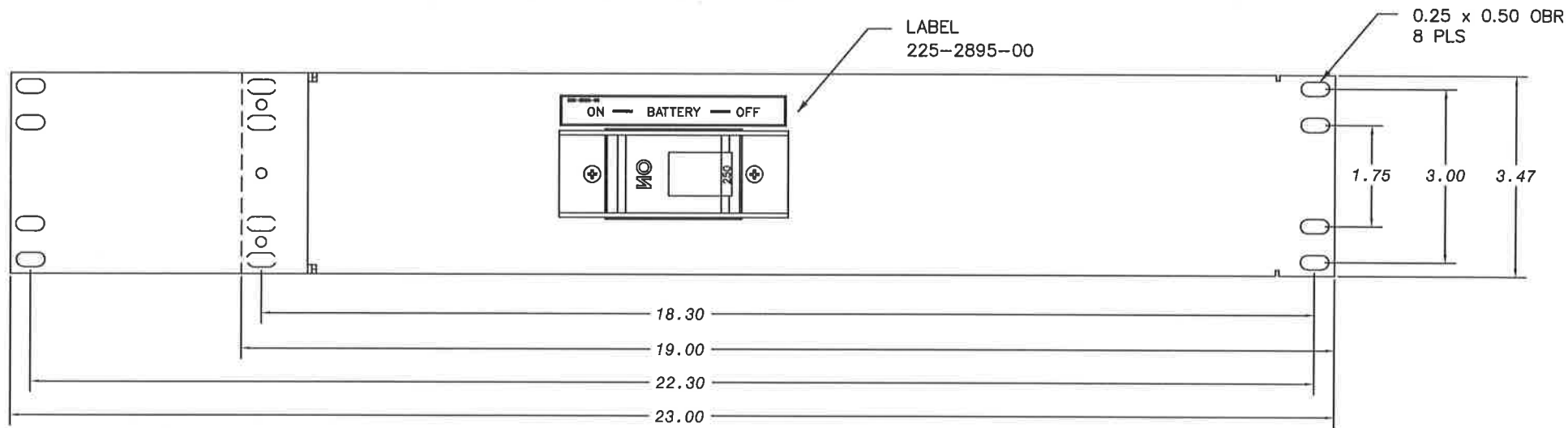
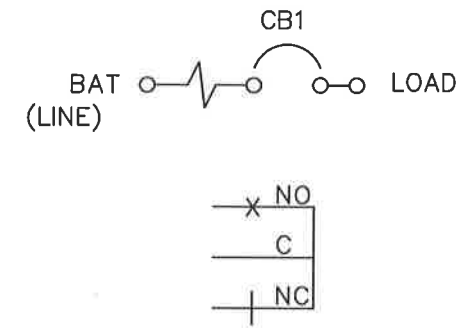
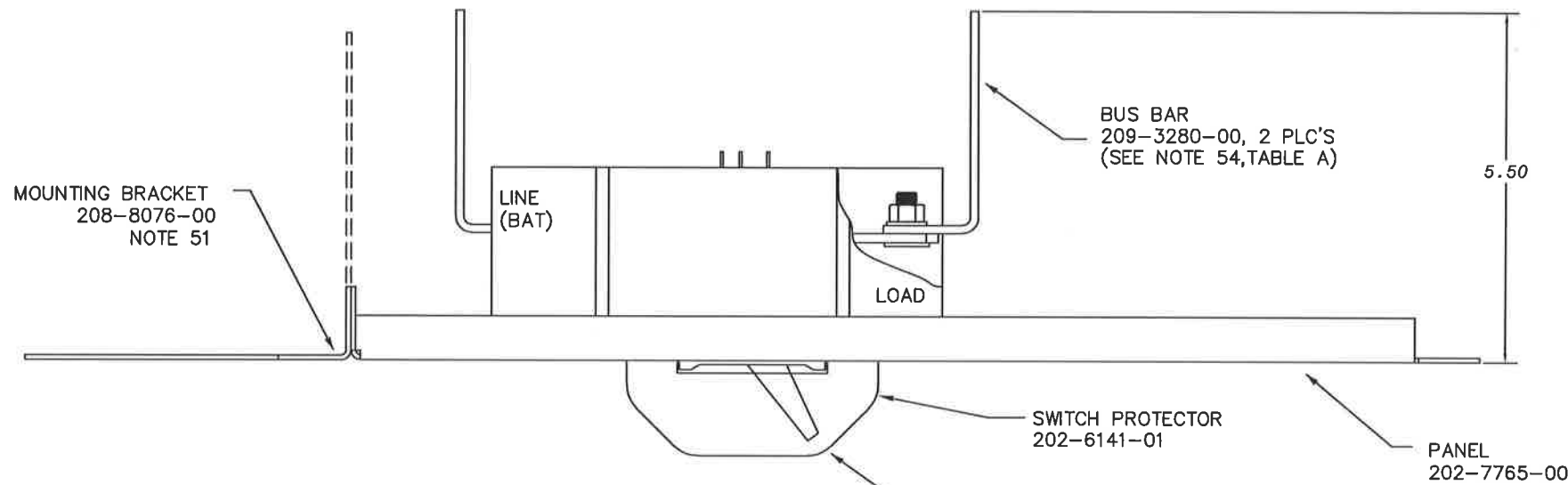
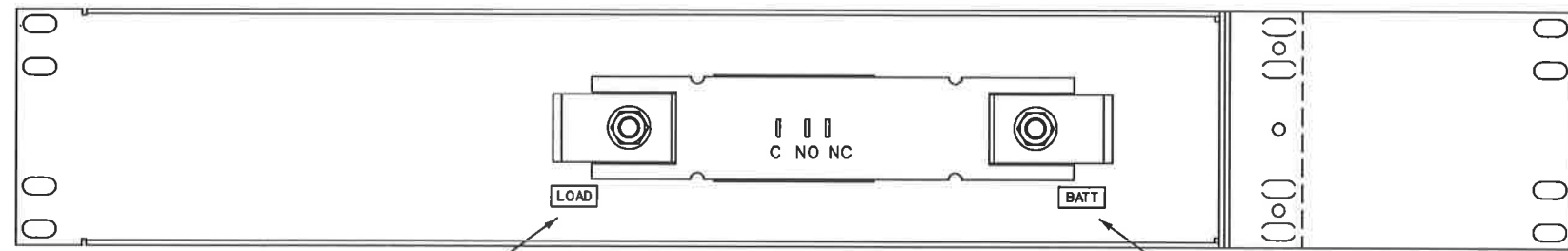
PROPRIETARY INFORMATION
 NOT TO BE COPIED, USED, TRANSMITTED, OR DISCLOSED WITHOUT PRIOR WRITTEN PERMISSION FROM UNIPOWER, LLC.



**BATTERY/LOAD DISCONNECT
 CIRCUIT BREAKER PANEL**

SIZE B	DOC TYPE / NUMBER PN 111-2916	ISSUE 9
------------------	----------------------------------	------------

SCALE: 1=1	SHEET: 1 OF 2	FILE NAME: PN111-2916_ISS_9
---------------	------------------	--------------------------------



PROPRIETARY INFORMATION NOT TO BE COPIED, USED, TRANSMITTED, OR DISCLOSED WITHOUT PRIOR WRITTEN PERMISSION FROM UNIPOWER, LLC.		
SIZE B	DOC TYPE / NUMBER PN 111-2916	ISSUE 9
SCALE: N/A	SHEET: 2 OF 2	FILE NAME: PN111-2916_JSS_9

ENGINEERING NOTES:

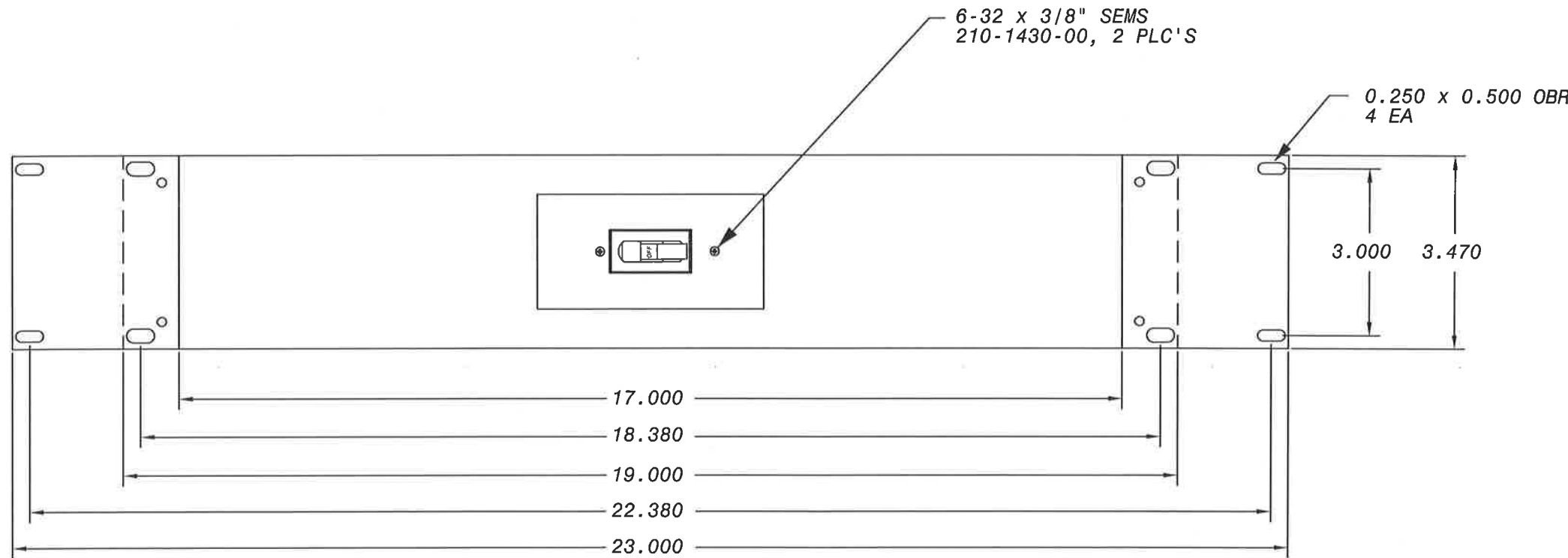
- 51. PANEL CAN BE MOUNTED IN A 19 INCH OR 23 INCH RACK BY PROPER PLACEMENT OF ADAPTOR BRACKET.
- 52. TYPE AM1 BREAKERS ARE EQUIPPED WITH AN INTEGRAL ALARM SWITCH WHICH SENDS FA SIGNALS WHEN BREAKER IS TRIPPED. IT DOES NOT ALARM IN THE "OFF" POSITION. ALARM CONNECTIONS ARE .020" x .205" TABS. USE PUSH ON, PART NUMBER 253-0311-01 OR EQUIVALENT.
- 53. SELECT THE PAINT COLOR FROM THE TABLE A
IE. 111-2916-60, COLOR A = ANSI 61 GRAY FINISH
IE. 111-2916-60, COLOR B = BEIGE FINISH
- 54. THIS CIRCUIT BREAKER IS POLARITY SENSITIVE. THE POSITIVE LEAD FROM THE BATTERIES MUST CONNECT TO LINE.
- 55. ALARM SWITCH COMMON MAY BE SUPPLIED EXTERNALLY, OR BY ADDING THE DASHED WIRE AS SHOWN, 20 GA MINIMUM.
- 56. INPUT AND OUTPUT CABLES SHOULD BE 4 GA MINIMUM, BREAKER STUDS ARE 1/4"-20.

TABLE A

COLOR	DESIGNATOR
ANSI 61 GRAY	A
BEIGE	B

ISSUES

ISSUE #	DESCRIPTION	ISS. BY	ISS. DATE
6	UPDATED UNIPOWER LOGO. SEE PCO# 44417.	WD	6/12/17



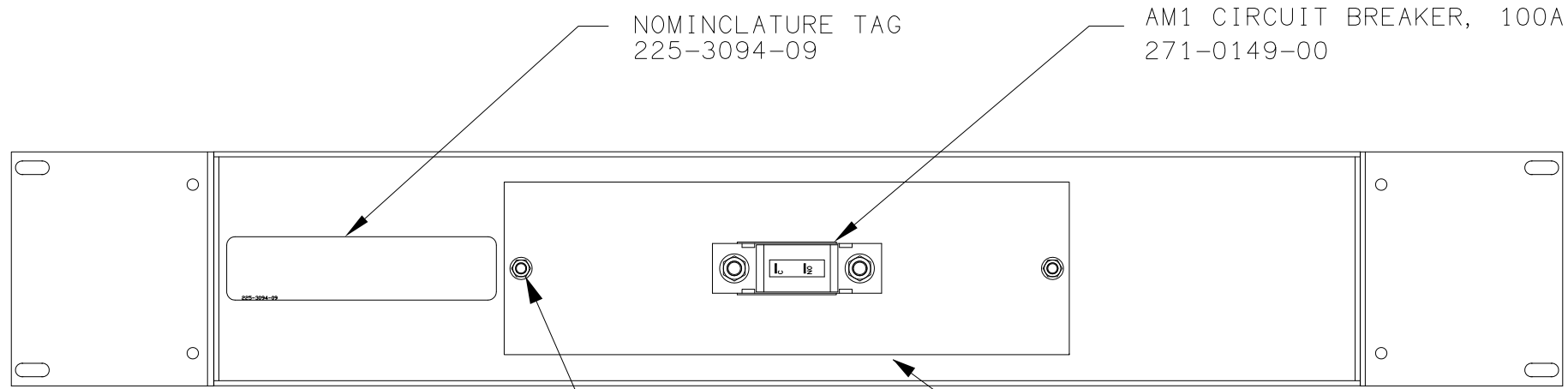
FRONT VIEW

SHEET INDEX						
SHEET NO.	1	2				
ISSUE	6	5				

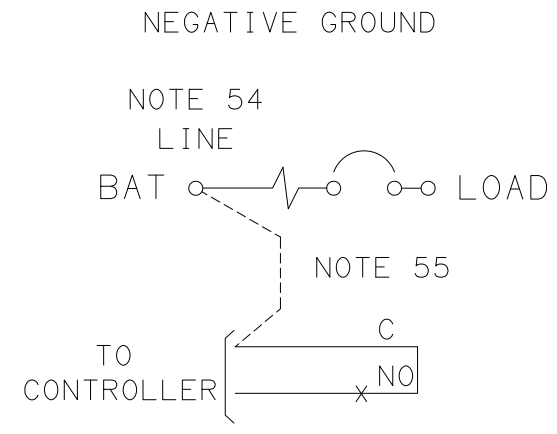
UNLESS OTHERWISE SPECIFIED DIMENSIONS ARE IN INCHES TOLERANCES ON:	APPROVALS	DATE
±	DRAWN SAN	3/26/87
HOLES +0.004 -0.002	CHECKED JB	3/26/87
FRACTIONS ±1/32	APPROVED BW	3/26/17
DECIMALS (XX) ±0.020	APPROVED	
DECIMALS (XXX) ±0.010		
ANGLES ±1/2°		
SQUARE CORNERS AND ANGLES ARE 90° UNLESS OTHERWISE SPECIFIED.		
WORKMANSHIP: PER SPEC ENG032		
MATERIAL:		
FINISH:		
PROPRIETARY INFORMATION NOT TO BE COPIED, USED, TRANSMITTED, OR DISCLOSED WITHOUT PRIOR WRITTEN PERMISSION FROM UNIPOWER, LLC.		
LOAD DISCONNECT CIRCUIT BREAKER PANEL 100 AMPS		
SIZE B	DOC TYPE / NUMBER PN 111-2916-60	ISSUE 6
SCALE: N/A	SHEET: 1 OF 2	FILE NAME: PN111-2916-60_SHT_1_ISS_6

A

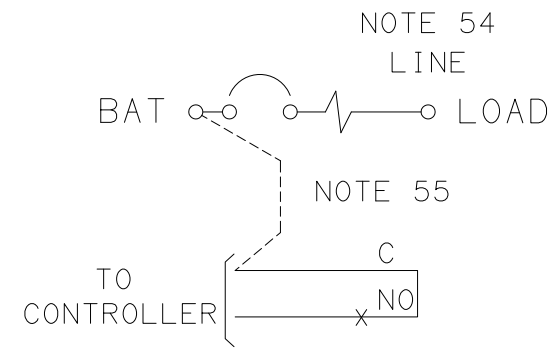
A



REAR VIEW



POSITIVE GROUND



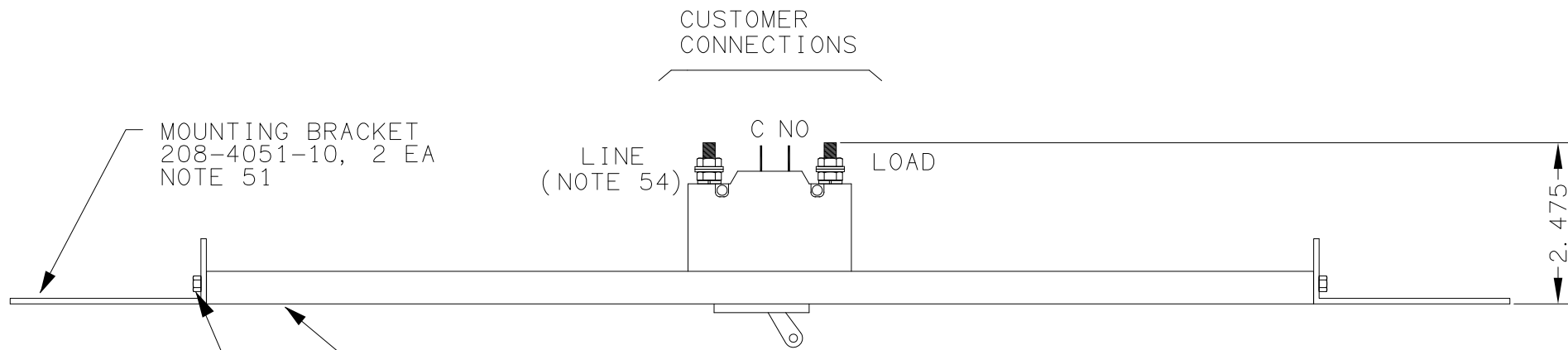
SCHEMATIC DIAGRAM

B

B

C

C



TOP VIEW

D

D

PROPRIETARY INFORMATION NOT TO BE COPIED, USED, TRANSMITTED, OR DISCLOSED WITHOUT PRIOR WRITTEN PERMISSION FROM UNIPOWER, LLC.		
SIZE B	DOC TYPE / NUMBER PN 111-2916-60	ISSUE 5
SCALE: NONE	SHEET: 2 OF 2	FILE NAME: PN111-2916-60_SHT_2_ISS_5