

ENGINEERING NOTES:

- 51. AMMETER SHUNTS ARE NORMALLY 600 AMPS, 50MV. HOWEVER, OTHER CURRENT RATINGS MAY BE SPECIFIED.
- 52. THE INPUT COPPER BUS BAR IS DESIGNED FOR DIRECT CONNECTION TO UNIPOWER VERTICAL BUS BAR SYSTEMS. FOR OTHER SYSTEMS, HOLES ARE PROVIDED FOR BOLT-ING LUGGED CABLES. INPUT LUGS ARE NOT PROVIDED, BUT MAY BE ORDERED SEPERATELY PER DRAWING ED991-0002-00.
- 53. UNIPOWER'S STANDARD PAINT IS ANSI 61 GRAY.
- 54. PANELS NOT EQUIPPED WITH A SHUNT, DO NOT INCLUDE R1. SEE TABLE A.
- 55. AN ALARM SIGNAL MAY BE EXTENDED TO AN EXTERNAL ALARM SYSTEM. DURING AN ALARM, A CLOSURE TO BATTERY IS PROVIDED ON THE APPROPRIATE ALARM TERMINAL:
 - 1) NEGATIVE GRD SYSTEMS, FA+OUT.
 - 2) POSITIVE GRD SYSTEMS, FA-OUT.
- 56. AN ALARM IS ACTIVATED ONLY BY ELECTRICAL TRIPPING OF A BREAKER IN PANELS EQUIPPED WITH AN ALARM SWITCH, (REFER TO TABLE A).
- 57. AN ALARM IS ACTIVATED BY EITHER ELECTRICAL OR MECHANICAL TRIPPING OF A BREAKER IN PANELS EQUIPPED WITH AN AUXILARY SWITCH, (REFER TO TABLE A).

MANUFACTURING NOTES:

- 101. ANTI-OXIDATION COATING WILL BE APPLIED BETWEEN ALL LAYERS OF LAMINATED COPPER BUS STRUCTURE. A COMPOUND SUCH AS GRAMOLIN 81Rh WILL BE APPLIED TO ALL JOINTED FLAT SURFACES PER THE MANUFACTURER'S INSTRUCTIONS.
- 102. MOUNT WIRE LUG BETWEEN BUS BAR AND LARGE MOUNTING WASHER.
- 103. REPLACE BOLTS SUPPLIED WITH SHUNT WITH P/N 210-8128-00, AS SHOWN. USE WASHERS SUPPLIED WITH SHUNT.

TABLE A

VOLTAGE	PANEL	SHUNT RTG. & P/N	CIRCUIT BRKR & P/N	ALARM TYPE	RATING	NOTES
+24 -48	111-3763-00	N/A	400A, 160VDC	ALARM SWITCH	STD	54, 55, 56
	111-3763-10	400A 695-1091-03	(1) 271-1040-01		STD	51, 55, 56
	111-3763-01	N/A	400A, 160VDC	AUXILARY SWITCH	STD	54, 55, 57
	111-3763-11	400A 695-1091-03	(1) 271-1040-00		STD	51, 55, 57

SHEET INDEX NOTE:

THE ISSUE OF SHEET 1 REFLECTS THE LATEST ISSUE OF THE DRAWING SET. WHEN THE DRAWING SET IS REVISED, ONLY THE ISSUE NUMBERS OF MODIFIED SHEETS ARE CHANGED. THE ISSUE NUMBERS OF UNMODIFIED SHEETS ARE NOT CHANGED.

SHEET INDEX

SHEET NUMBER	ISSUE NUMBER							
	1	2	3	4	5	6	7	8
1	1	2	3	4	5			
2	1	2	3	4	5			
3	1	1	2	3	4			

ISSUES

ISSUE #	DESCRIPTION	ISS. BY ISS. DATE	APP. BY APP. DATE
5	SEE ECN 20042. UPDATED LOGO/VERBIAGE TO STATE UNIPOWER.	WD 1/29/15	MCM 1/30/15

UNLESS OTHERWISE SPECIFIED DIMENSIONS ARE IN INCHES TOLERANCES ON:		APPROVALS	DATE
±		DRAWN MWY	10/30/89
HOLES	+0.004 -0.002	CHECKED SS	12/14/89
FRACTIONS	±1/32	APPROVED MCM	2/19/04
DECIMALS (XX)	±0.020	APPROVED	
DECIMALS (XXX)	±0.010		
ANGLES	±1/2'		

SQUARE CORNERS AND ANGLES ARE 90° UNLESS OTHERWISE SPECIFIED.

WORKMANSHIP:
PER SPEC ENG032

MATERIAL:

FINISH:

PROPRIETARY INFORMATION
NOT TO BE COPIED, USED, TRANSMITTED, OR DISCLOSED WITHOUT PRIOR WRITTEN PERMISSION FROM UNIPOWER, LLC.



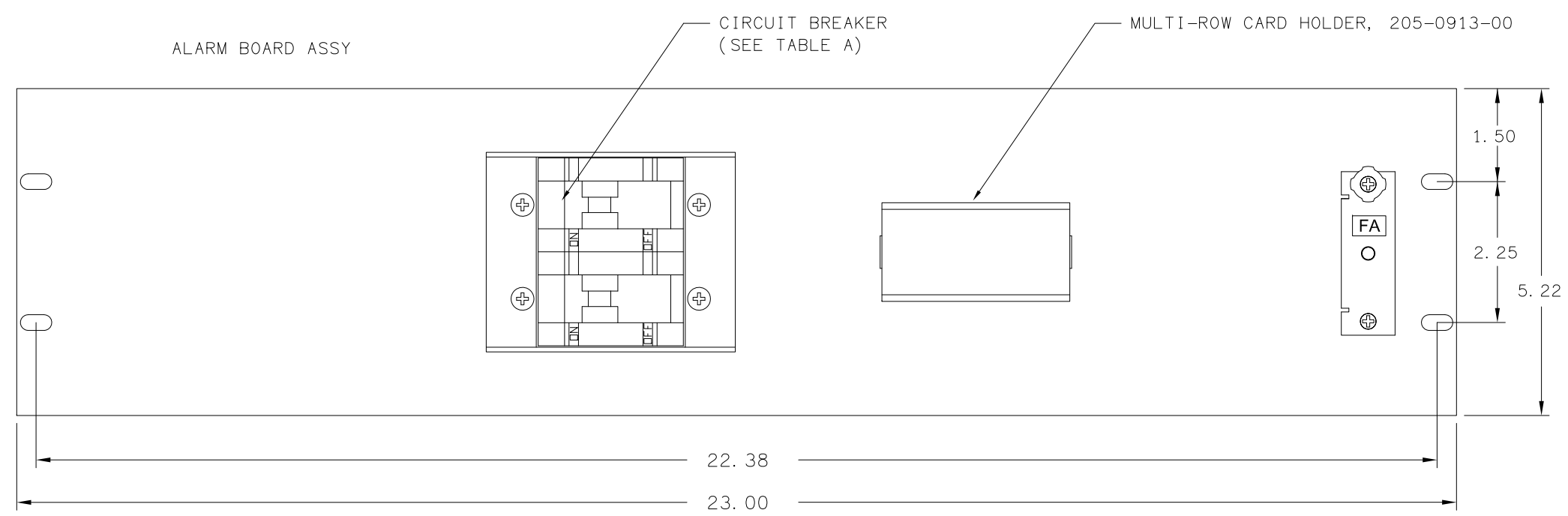
400A, GJ1P, HEINEMANN
CIRCUIT BREAKER PANEL
WITH FUSE ALARM

SIZE B	DOC TYPE / NUMBER PN 111-3763	ISSUE 5
---------------	----------------------------------	------------

SCALE: N/A	SHEET: 1 OF 3	FILE NAME: PN111-3763_SHT_1_ISS_5
---------------	------------------	--------------------------------------

1 2 3 4

A
B
C
D



FRONT VIEW

ALARM BOARD ASSY
385-5152-00

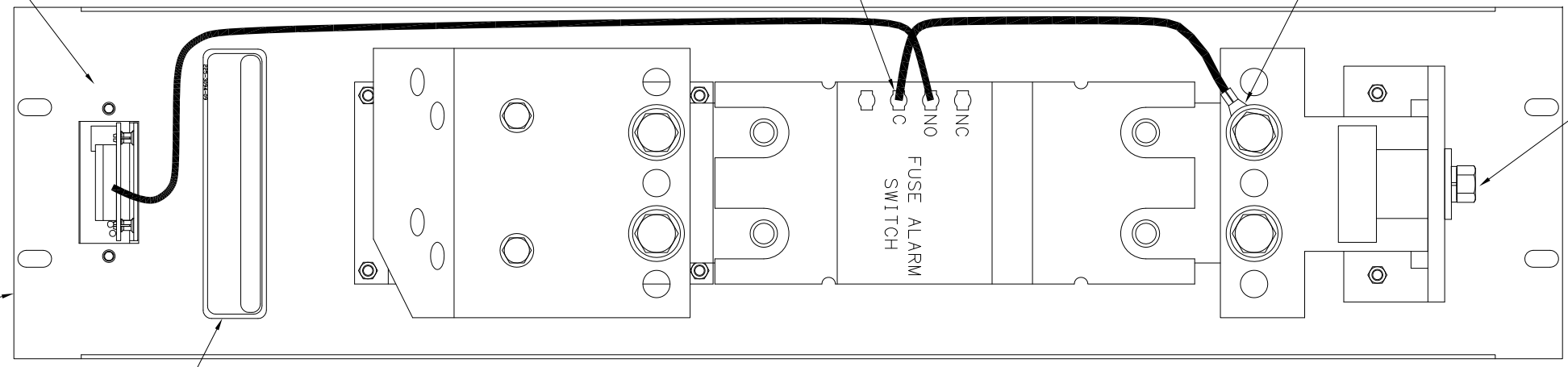
PIN CONNECTOR, 262-3300-00

WIRE LUG, 253-0300-03,
NOTE 102.

NOTE 103

PANEL, 202-3850-00

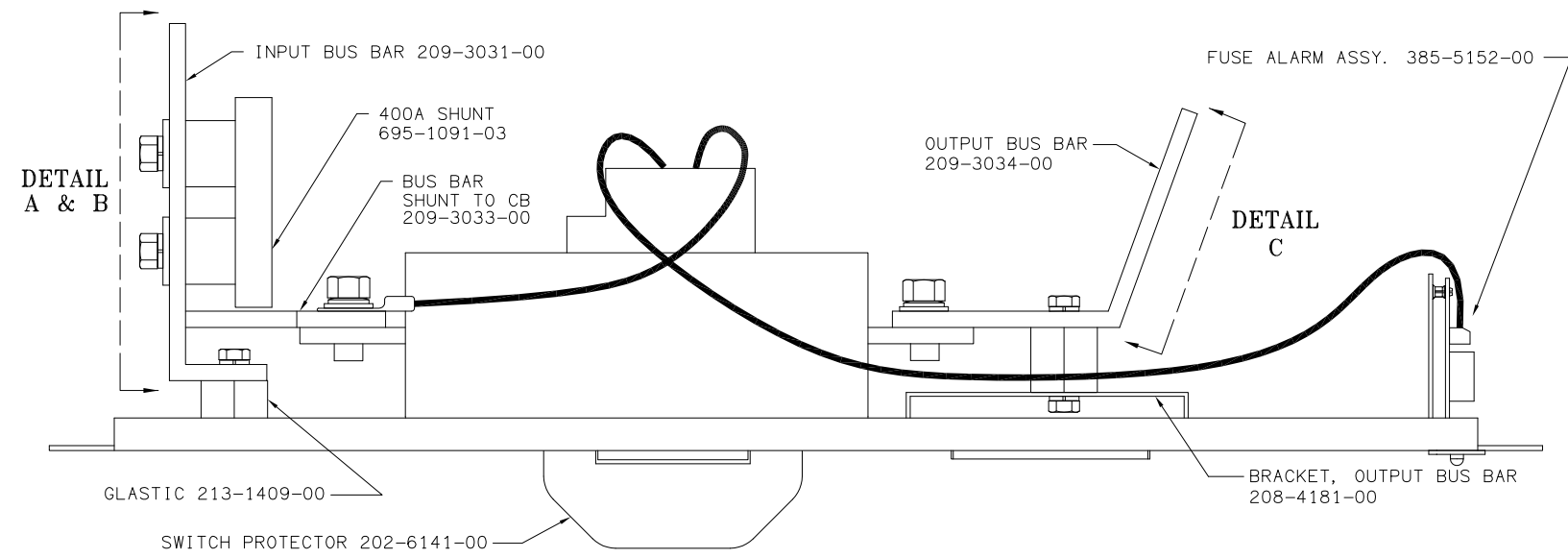
NOMINCLATURE TAG 225-3094-09



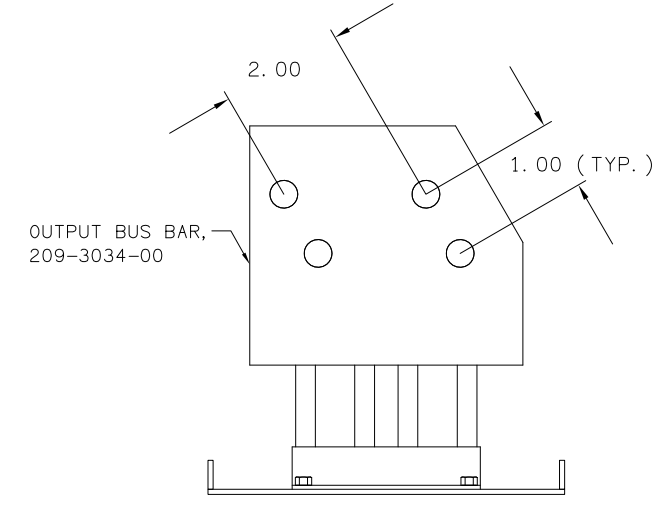
REAR VIEW
WITH SHUNT (111-3763-10)

PROPRIETARY INFORMATION		
NOT TO BE COPIED, USED, TRANSMITTED, OR DISCLOSED WITHOUT PRIOR WRITTEN PERMISSION FROM UNIPOWER, LLC.		
SIZE B	DOC TYPE / NUMBER PN 111-3763	ISSUE 5
SCALE: N/A	SHEET: 2 OF 3	FILE NAME: PN111-3763_SHT_2_ISS_5

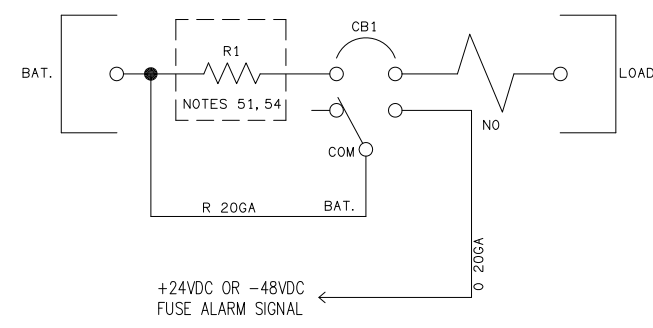
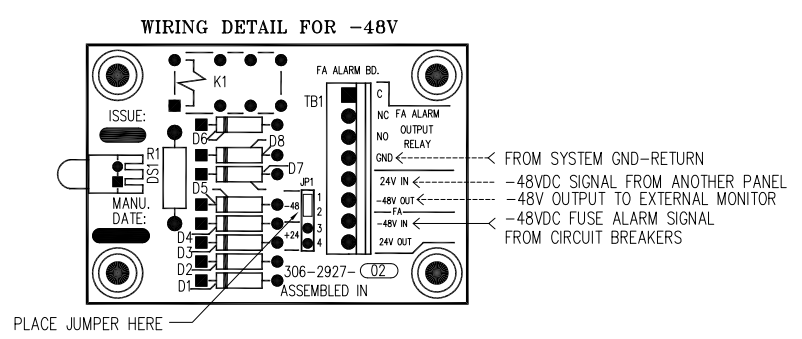
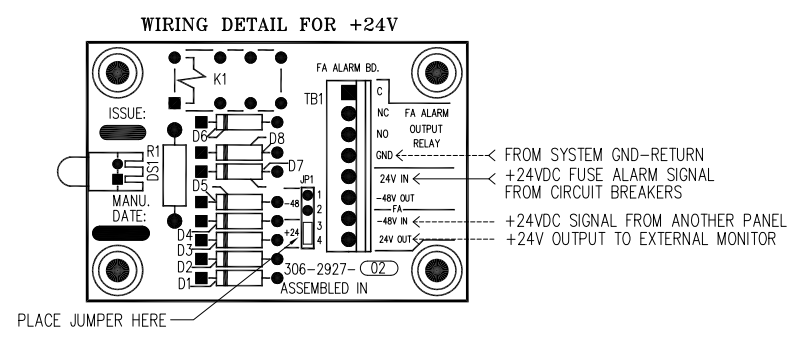
1 2 3 4



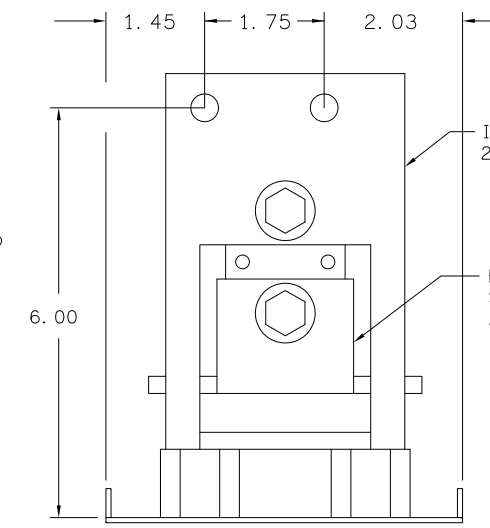
TOP VIEW WITH SHUNT (111-3763-10)



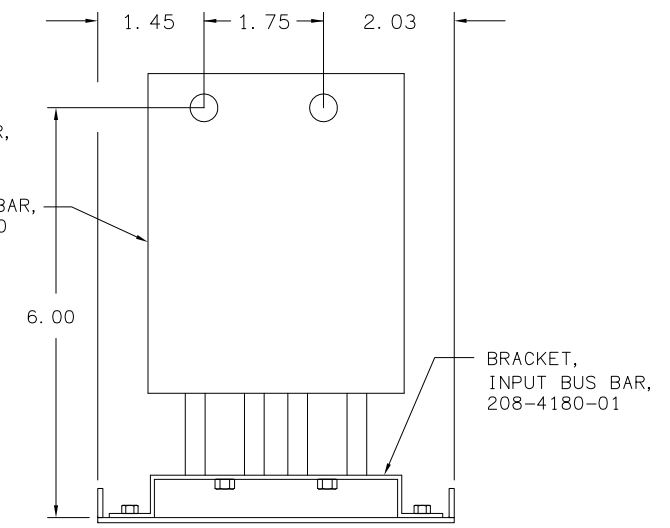
DETAIL C



SCHEMATIC DIAGRAM



DETAIL A WITH SHUNT (111-3763-10,-11)



DETAIL B WITHOUT SHUNT (111-3763-00,-01)

PROPRIETARY INFORMATION		
NOT TO BE COPIED, USED, TRANSMITTED, OR DISCLOSED WITHOUT PRIOR WRITTEN PERMISSION FROM UNIPOWER, LLC.		
SIZE B	DOC TYPE / NUMBER PN 111-3763	ISSUE 4
SCALE: N/A	SHEET: 3 OF 3	FILE NAME: PN111-3763_SHT_3_ISS_4