

DESCRIPTION

UNIPOWER's 3765 Series Panel provides a compact power distribution solution with high-capacity, current-interrupting breakers.

The 3765 Breaker Panel has an input voltage options of +24V or -48V and has a maximum capacity of 600 amps.

Up to 24 breakers rated from 5A to 125A can be installed, subject to the overall capacity not being exceeded.

The 3765 Breaker Panel can be supplied with or without a 600A / 50mV shunt.

FEATURES

- ◆ 3RU High: 5.22"
- ◆ 23-Inch Rack Mounting
- ◆ Current Capacity: 600A
- ◆ Operating Voltage: +24 or -48VDC
- ◆ 24 Breakers - 5A to 125A
- ◆ LED Alarm Indicator
- ◆ Form C Relay Contacts

THREE YEAR WARRANTY



AVAILABLE CONFIGURATIONS

VOLTAGE	SHUNT	FUSE ALARM	BREAKER POSITIONS	PART NUMBER
+24VDC or -48VDC	none	Yes	24	111-3765-00
	600A		24	111-3765-10

Note: Operating voltage is configured through alarm board wiring, see details on page 2.

AVAILABLE BREAKERS

PART NUMBER	AMPS	PART NUMBER	AMPS
274.2920.05	5A	274.2920.50	50A
274.2920.10	10A	274.2920.60	60A
274.2920.15	15A	274.2920.70	70A
274.2920.20	20A	274.2920.80	80A
274.2920.25	25A	274.2920.90	90A
274.2920.30	30A	274.2920.100	100A
274.2920.40	40A	274.2920.125	125A *

* 2-pole device consumes 2 positions.

NOTE: Breakers must be ordered individually.

SPECIFICATIONS

Typical at 25°C Unless Otherwise Noted.

INPUT/OUTPUT

Breaker Type	AM1 with Alarm Contact
Breaker Current Rating	5A to 125A
Breaker Interrupt Rating ¹	10kAIC
Panel Capacity	600A
Breaker Configuration	24 Breakers
Alarm Fuses	GMT (recommended 0.5A)
Voltage	
-48V Nominal	42-60VDC
+24V Nominal	21-30VDC

ALARMS

Alarm Indicator	Red LED
LED Status	OFF = Normal ON = Alarm
Alarm Relay	Form C

ENVIRONMENTAL

Operating Temp. Range	-10°C to +70°C
Storage Temp. Range	-40°C to +85°C
Humidity	0% to 95%, Non-Condensing

MECHANICAL SPECIFICATIONS

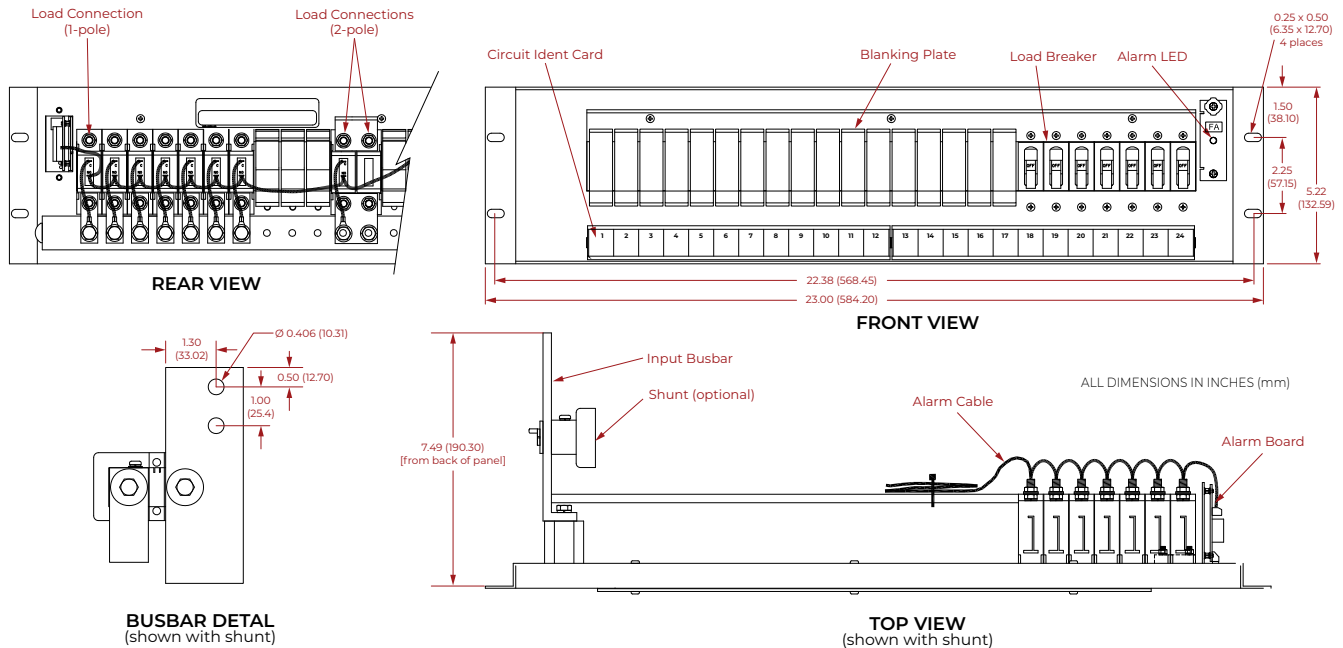
Panel Material	Steel
Finish	Powder Coat Gray
Dimensions, Inches (mm)	5.22 H x 23.00 W x 7.49 D (132.6 x 584.2 x 190.3)
Weight	16.0 lbs. (7.3 kg.)
Mounting	23" x 3RU

CONNECTIONS

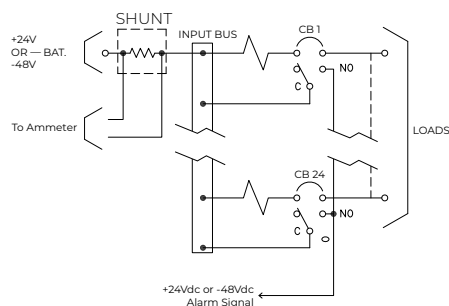
Input Connections	Accepts 2-hole lug (3/8" Hdw, 1" C-to-C)
Output Connections	1/4 - 20 Threaded Studs/Nuts
Alarm Connections	Compression/Screw Terminals

NOTES:

1. 50kAIC available to special order, consult Applications Engineering.



SCHEMATIC



ALARM BOARD WIRING DETAIL

