

**3790 SERIES**  
**BATTERY DISCONNECT PANELS**  
-48V or +24V | 100A to 250A

**DESCRIPTION**

UNIPower's 3790 Series provides a compact 19" or 23" rack-mounted 100A to 250A battery disconnect solutions in a 3RU rack space.

The panels can operate at +24V or -48V and incorporate a double pole single throw GJ1 style breaker along with an optional shunt for measuring battery current.



**FEATURES**

- ◆ 3RU High
- ◆ 19-Inch or 23-Inch Rack Mounting
- ◆ Current Capacity: 100A or 250A
- ◆ Operating Voltage: +24 or -48VDC
- ◆ DPST GJ1 Breaker
- ◆ LED Alarm Indicator
- ◆ Form C Relay Contacts

**AVAILABLE CONFIGURATIONS**

VOLTAGE <sup>1</sup>	BREAKER	SHUNT	ALARM	PANEL SIZE <sup>3</sup>	PART NUMBER
+24VDC or -48VDC	100A DPST <sup>2</sup> GJ1	-	Yes	19" x 3RU or 23" x 3RU	111-3792-100
		200A			111-3793-100
	125A DPST <sup>2</sup> GJ1	-			111-3792-125
		200A			111-3793-125
	150A DPST <sup>2</sup> GJ1	-			111-3792-150
		200A			111-3793-150
	175A DPST <sup>2</sup> GJ1	-			111-3792-175
		200A			111-3793-175
	200A DPST <sup>2</sup> GJ1	-			111-3792-200
		200A			111-3793-200
	225A DPST <sup>2</sup> GJ1	-			111-3792-225
		600A			111-3793-225
	250A DPST <sup>2</sup> GJ1	-			111-3792-250
		600A			111-3793-250

Notes:

1. See alarm board wiring detail to select desired voltage.
2. Double Pole, Single Throw.
3. Panels are supplied with a reversible bracket for 19"/23" mounting and are shipped as standard configured for 19". Specify when ordering if panels should be shipped configured for 23" mounting.

**TWO-YEAR WARRANTY**

**SAFETY COMPLIANCE**

UL60950-1 2nd Ed.  
CSA22.2, No. 950-1 2nd Ed.  
EN60950-1 2nd Ed.

[www.unipowerco.com](http://www.unipowerco.com)

NORTH AMERICA CALL: +1-954-346-2442 • EUROPE CALL: +44 (0)1903 768200

## SPECIFICATIONS

Typical at 25°C Unless Otherwise Noted.

### INPUT / OUTPUT

Breaker Rating / Panel Capacity .....	100A to 250A
Shunt .....	200A or 600A
Breaker Type .....	Double Pole, Single Throw GJ1
Voltage	
-48V Nominal .....	42-60VDC
+24V Nominal .....	21-30VDC

### ALARMS

Alarm Indicator .....	Red LED
LED Status .....	OFF = Normal
	ON = Alarm
Alarm Connections .....	Form C Relay Contact

<b>SAFETY STANDARDS</b> (compliance with) .....	UL60950-1 2nd Ed.
	CSA22.2 No.60950-1 2nd. Ed.
	EN60-950-1 2nd Ed.

### ENVIRONMENTAL

Operating Temp. Range .....	-10°C to +70°C
Storage Temp. Range .....	-40°C to + 85°C
Humidity .....	0% to 95%, Non-Condensing

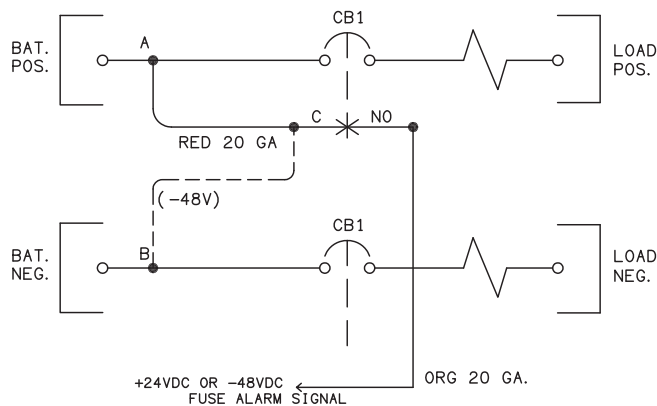
### PHYSICAL SPECIFICATIONS

Panel Material .....	Steel
Finish .....	Powder Coat Gray
Dimensions, Inches (mm)	
19" models .....	5.22 H x 19.00 W x 8.29 D (132.6 x 482.6 x 210.6)
23" models .....	5.22 H x 23.00 W x 8.29 D (132.6 x 584.2 x 210.6)
Shipping Weight .....	12.0 lbs. (5.5 kg.)
Rack Mounting Width .....	19 or 23 Inches

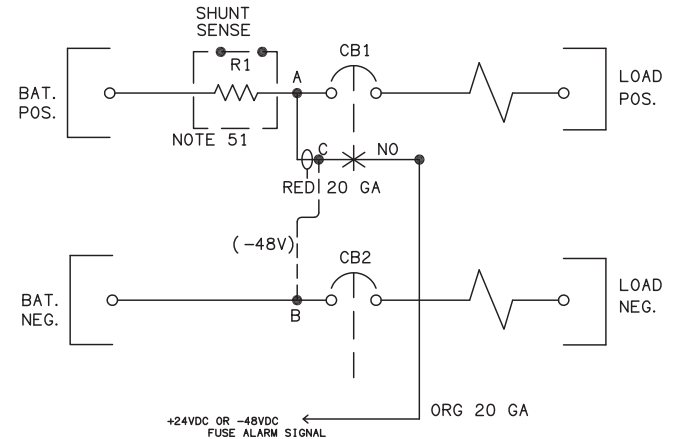
### CONNECTIONS

Bus Connections .....	Accepts 2-hole lug (3/8" Hdw, 1" C-to-C)
Alarm Connections .....	Compression/Screw Terminals

## SCHEMATICS

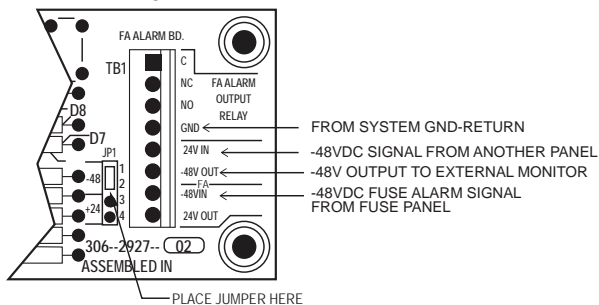
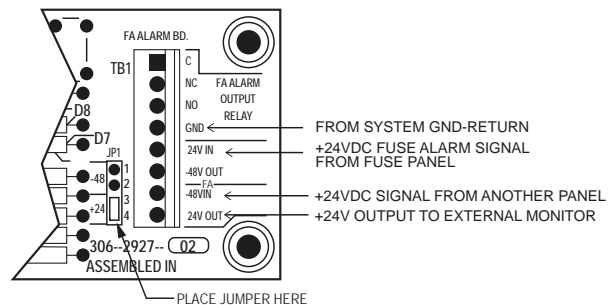
**111-3792**


CONNECTION SHOWN FOR +24 VOLT SYSTEM  
 FOR -48VOLT SYSTEM; REMOVE THE A-C  
 CONNECTION AT A AND CONNECT TO B.

**111-3793**


CONNECTION SHOWN FOR +24 VOLT SYSTEM  
 FOR -48VOLT SYSTEM; REMOVE THE A-C  
 CONNECTION AT A AND CONNECT TO B.

## ALARM BOARD WIRING

**-48V**

**+24V**


## DESCRIPTION & DIMENSIONS

