

SEE DETAIL "E", ON SHEET 2 FOR SIDE SHIELD INSTALLATION.

Add sleeving and ty-raps to all points where cables are secured to the battery rack. This will prevent cable from being damaged. (TYPICAL both sides)

Add sleeving and ty-raps to all points where "C" channel may come in contact with cable. This will prevent cable from being damaged. (TYPICAL both sides)

- NOTES:
1. ANCHORS NOT PROVIDED BY C&D.
 2. RECOMMENDED ANCHOR SIZE IS HILTI, HSL M12/25 OR EQUIVALENT
 3. ESTIMATED RACK ASSEMBLY WEIGHT, 300LBS. ESTIMATED FULL SYSTEM WEIGHT, 3000LBS.
 4. POSITIVE AND NEGATIVE BUS ARE NOT DESIGNED TO SUPPORT WEIGHT OF CABLE(S).
 5. SEE SHEET 2 FOR DETAILS.
 6. ITEM #21, CORD CLIP, SHIPPED LOOSE FOR CUSTOMER INSTALLATION.
 7. BATTERIES TO BE ORDERED SEPARATELY.
 8. FREE CABLE ENDS MUST BE PROTECTED FROM SHORT, USE ITEM #15. MAKE EACH CAP PER BREAKER SELECTION. STARTING WITH NUMBER 1 FOR THE RIGHT MOST BREAKER LOOKING FROM FROM THE FRONT.

SYSTEM PART NUMBER **110.7050.02**

| BILL OF MATERIALS | | | |
|-------------------|-----|---------------|---|
| ITEM | QTY | PART NO. | DESCRIPTION |
| 1 | 1 | 170.0501.00A | FA BATTERY RACK |
| 2 | 1 | 111.3955.50 | BATTERY DISCONNECT PANEL, AM1, 13 POSITION. |
| 3 | 1 | 209.5501.10 | GROUND RETURN BUS BAR |
| 4 | 1 | WIRO2778 | CABLE ASSY, #4 88" LG., 90° LUG |
| 5 | 1 | WIRO2779 | CABLE ASSY, #4 74" LG., 90° LUG |
| 6 | 1 | WIRO2780 | CABLE ASSY, #4 62" LG., 90° LUG |
| 7 | 1 | WIRO2781 | CABLE ASSY, #4 50" LG., 90° LUG |
| 8 | 1 | WIRO2782 | CABLE ASSY, #4 36" LG., 90° LUG |
| 9 | 1 | RAO2492-86 | CABLE ASSY, #4 86" LG., DBL HOLE LUG |
| 10 | 1 | RAO2492-72 | CABLE ASSY, #4 72" LG., DBL HOLE LUG |
| 11 | 1 | RAO2492-58 | CABLE ASSY, #4 58" LG., DBL HOLE LUG |
| 12 | 1 | RAO2492-44 | CABLE ASSY, #4 44" LG., DBL HOLE LUG |
| 13 | 1 | RAO2492-30 | CABLE ASSY, #4 30" LG., DBL HOLE LUG |
| 14 | 8 | PHO2948 | CLIP, SIDE SHIELD |
| 15 | 10 | REO3879 | SHIPPING CAP, FOR #4 LUGS. |
| 16 | 2 | PHO2931-11 | SIDE SHIELD, FR PVC, 17.25" X 9.50" |
| 18A | 10 | 210.1292.00 | BOLT, 3/8-16 X 1.00" S.S. |
| 18B | 20 | 212.2518.00 | WASHER, FLAT 3/8" S.S. |
| 18C | 10 | 211.0506.01 | NUT, HEX, "KEPS" 3/8"-16 S.S. |
| 19 | 1 | 225.8530.00 | LABELS: 1A-2K |
| 20 | 5 | RAO2498-20.50 | EDGE PROTECTOR, 20.50" |
| 21 | 10 | PHO2932 | CORD CLIP, .63" (SHIPPED LOOSE) |
| 22 | 5 | 208.8500.50 | BRACKET, BATTERY STABILIZATION |
| 23 | 10 | 210.1281.00 | BOLT, 1/4-20 X 3/4", HEX HEAD |
| 24 | 20 | 212.2516.00 | WASHER, 1/4, FLAT |
| 25 | 10 | 211.0501.01 | NUT, 1/4-20 |
| 26 | 1 | WIRO2783 | CABLE ASSY, #4 98" LG., 90° LUG |
| 27 | 1 | WIRO2784 | CABLE ASSY, #4 84" LG., 90° LUG |
| 28 | 1 | WIRO2785 | CABLE ASSY, #4 72" LG., 90° LUG |
| 29 | 1 | WIRO2786 | CABLE ASSY, #4 60" LG., 90° LUG |
| 30 | 1 | WIRO2787 | CABLE ASSY, #4 46" LG., 90° LUG |
| 31 | 1 | RAO2492-96 | CABLE ASSY, #4 96" LG. |
| 32 | 1 | RAO2492-82 | CABLE ASSY, #4 82" LG., DBL HOLE LUG |
| 33 | 1 | RAO2492-68 | CABLE ASSY, #4 68" LG., DBL HOLE LUG |
| 34 | 1 | RAO2492-54 | CABLE ASSY, #4 54" LG., DBL HOLE LUG |
| 35 | 1 | RAO2492-40 | CABLE ASSY, #4 40" LG., DBL HOLE LUG |
| 40 | 1 | JN00193-1 | LABEL: "POS", DBL HOLE LUG |
| 41 | 1 | JN00193-2 | LABEL: "NEG", DBL HOLE LUG |
| 42 | 12 | 215.6050.00 | *CABLE TIE: 15" NYLON, BLACK |
| 60 | 5 | 213.4250.10 | PLASTIC DIVIDER |
| 61 | 6 | 032.0002.01 | SLEEVING |
| 62 | 40 | 216.6020.00 | TY-RAP |

| ISSUES | | | |
|---------|---|----------------------|-----------------|
| ISSUE # | DESCRIPTION | ISS. BY ISS. DATE | CKD/APP DATE |
| 1 | SEE ECN 16513 Original release of documentation. | KEL 09/12/08 | CJM 9/26/08 |
| 2 | SEE ECN 16644 Switch breaker locations from (left to right) to (right to left) | KEL 12/02/08 | MCM 12/4/08 |
| 3 | SEE ECN 16818 | WD 5/13/09 | MCM 5/14/09 |
| 4 | SEE ECN 16891 & 16896 | WD 6/25/09 | MCM 6/29/09 |
| 5 | SEE ECN 17292 INCORPORATED CHANGES TO ENSURE MAPICS & DWG BOMS MATCH. | WD 5/21/10 | MCM 5/24/10 |
| 6 | ECN17362.Chg'd item 60 in drawing BOM list from 213.4250.00 to 213.4250.10. PCO45498.Cosmetic changes.No Rev chg. | WD 7/23/10 | DBW 7/23/10 |

| UNLESS OTHERWISE SPECIFIED DIMENSIONS ARE IN INCHES TOLERANCES ON: | APPROVALS | | DATE |
|--|-----------------|---------------------|---------|
| | ± | DRAWN K.E. LEWIS | |
| HOLES +0.004 -0.002 | CHECKED DBW | | 9/25/08 |
| FRACTIONS ±1/32 | APPROVED CJM | | 9/26/08 |
| DECIMALS (XX) ±0.020 | APPROVED | | |
| DECIMALS (XXX) ±0.010 | APPROVED | | |
| ANGLES ±1/2° | | | |

SQUARE CORNERS AND ANGLES ARE 90° UNLESS OTHERWISE SPECIFIED.

MATERIAL:

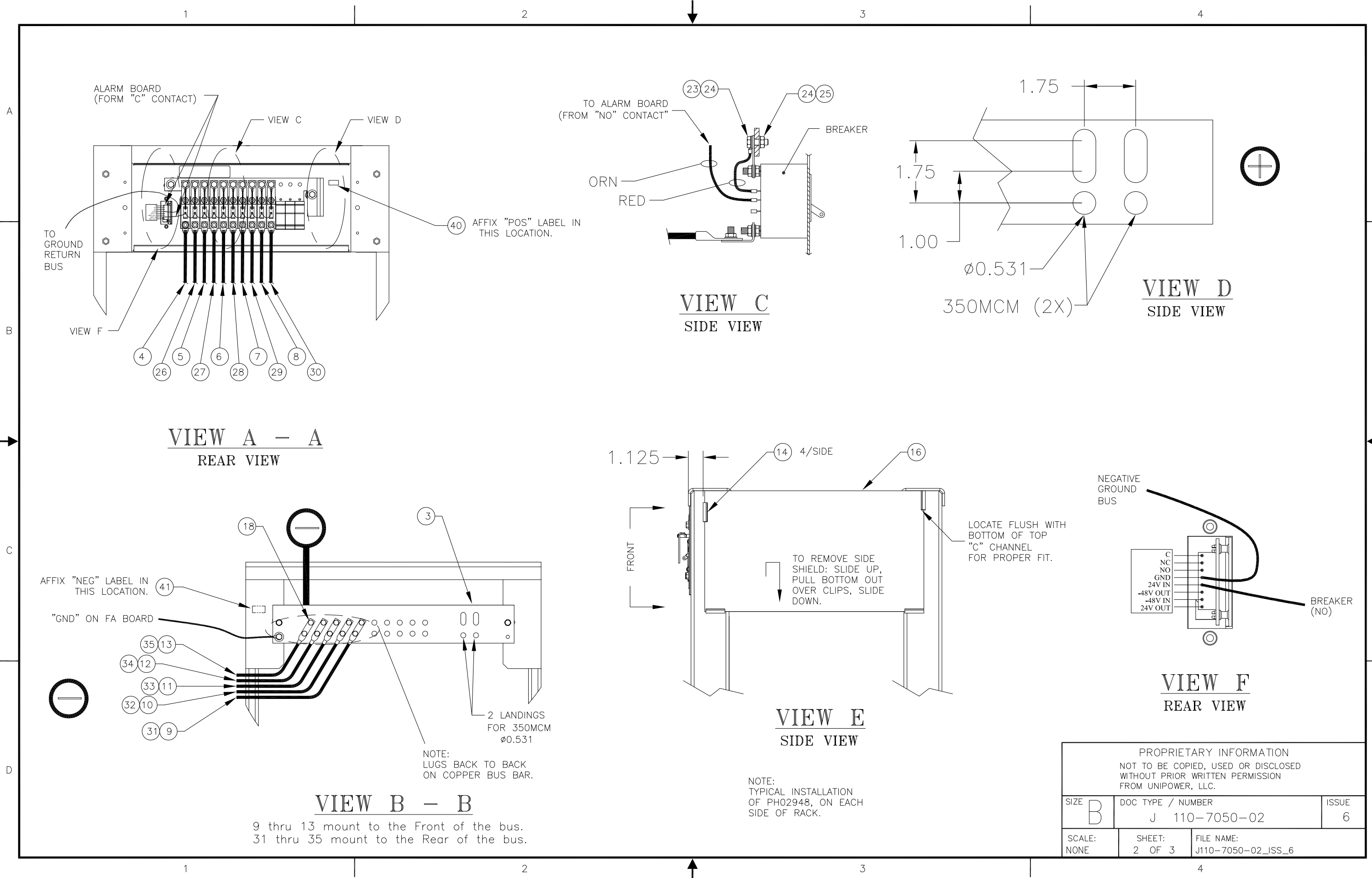
FINISH:

PROPRIETARY INFORMATION
NOT TO BE COPIED, USED OR DISCLOSED
WITHOUT PRIOR WRITTEN PERMISSION
FROM UNIPOWER, LLC.



BATTERY SYSTEM,
+24VDC, BRBK PNL & RETURN BUS
5-TIER FA RACK (NEBS ZONE 2)

| | | |
|----------------|------------------------------------|----------------------------------|
| SIZE B | DOC TYPE / NUMBER J 110-7050-02 | ISSUE 6 |
| SCALE: NONE | SHEET: 1 OF 3 | FILE NAME: J110-7050-02_ISS_6 |



ALARM BOARD
(FORM "C" CONTACT)

VIEW C

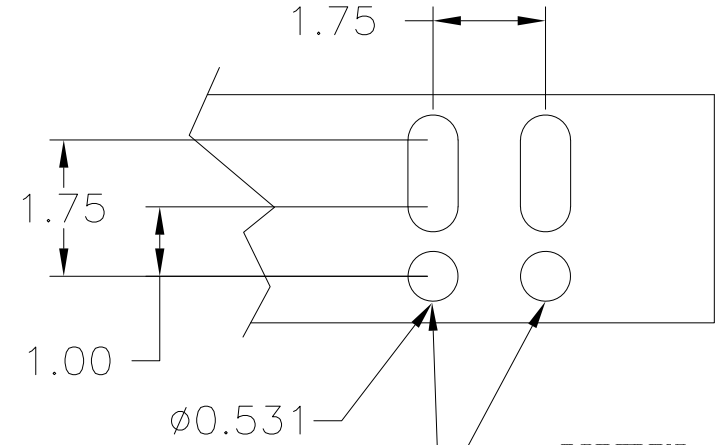
VIEW D

TO ALARM BOARD
(FROM "NO" CONTACT)

BREAKER

ORN

RED

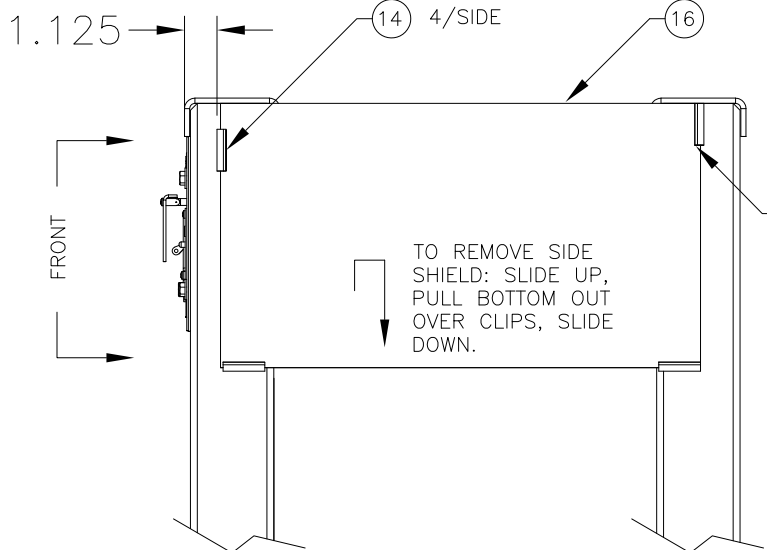


$\phi 0.531$

350MCM (2X)

VIEW D
SIDE VIEW

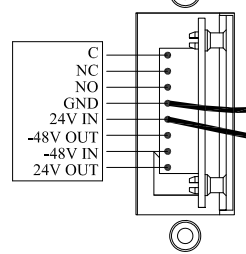
VIEW A - A
REAR VIEW



VIEW E
SIDE VIEW

NEGATIVE
GROUND
BUS

LOCATE FLUSH WITH
BOTTOM OF TOP
"C" CHANNEL
FOR PROPER FIT.



BREAKER
(NO)

VIEW F
REAR VIEW

AFFIX "NEG" LABEL IN
THIS LOCATION.

"GND" ON FA BOARD

NOTE:
LUGS BACK TO BACK
ON COPPER BUS BAR.

VIEW B - B

9 thru 13 mount to the Front of the bus.
31 thru 35 mount to the Rear of the bus.

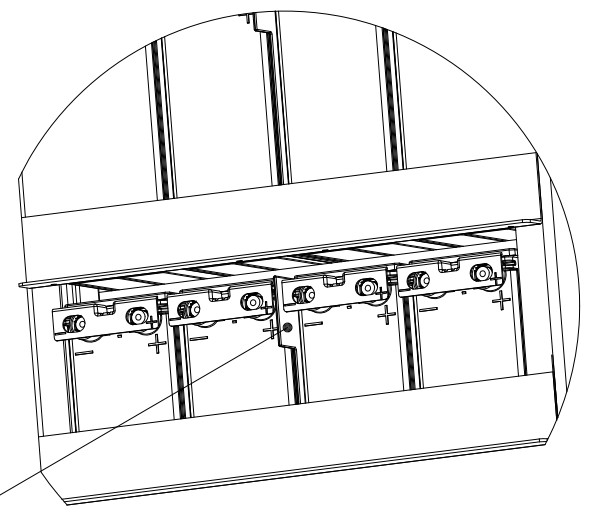
NOTE:
TYPICAL INSTALLATION
OF PH02948, ON EACH
SIDE OF RACK.

| | | |
|---|------------------------------------|----------------------------------|
| PROPRIETARY INFORMATION NOT TO BE COPIED, USED OR DISCLOSED WITHOUT PRIOR WRITTEN PERMISSION FROM UNIPOWER, LLC. | | |
| SIZE B | DOC TYPE / NUMBER J 110-7050-02 | ISSUE 6 |
| SCALE: NONE | SHEET: 2 OF 3 | FILE NAME: J110-7050-02_ISS_6 |

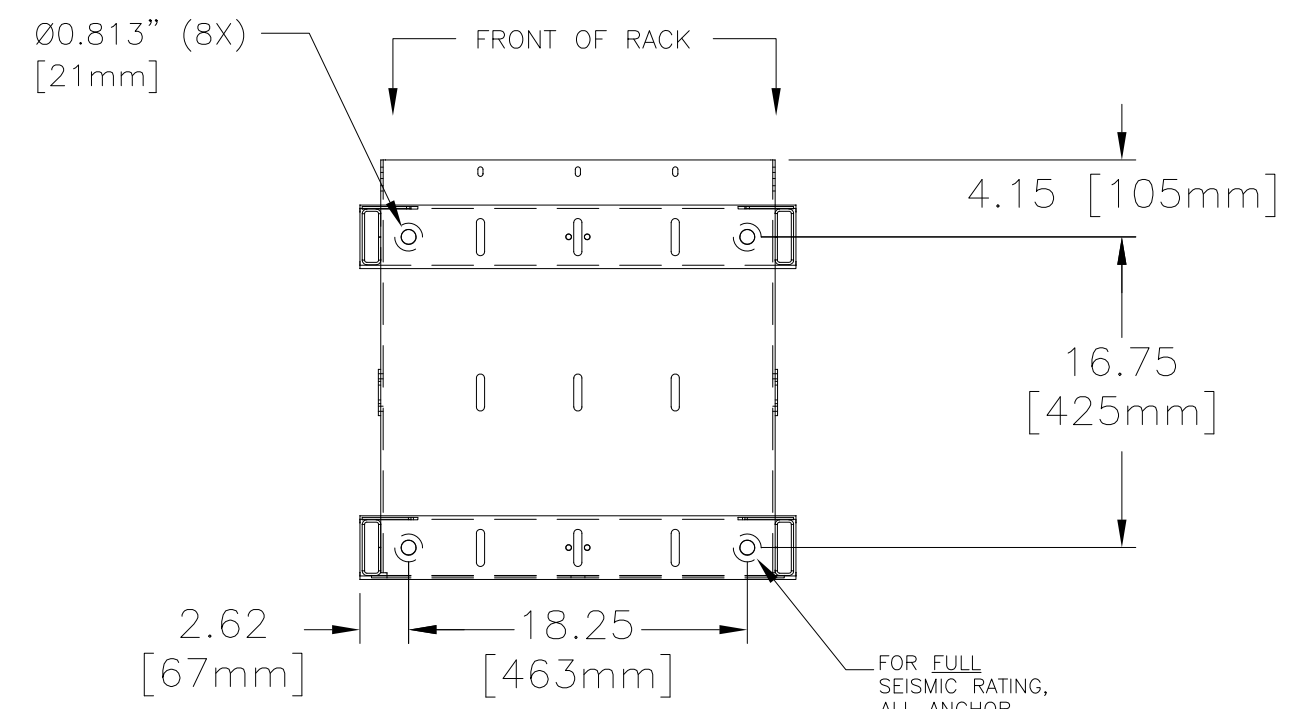
1 2 3 4

A
B
C
D

A
B
C
D

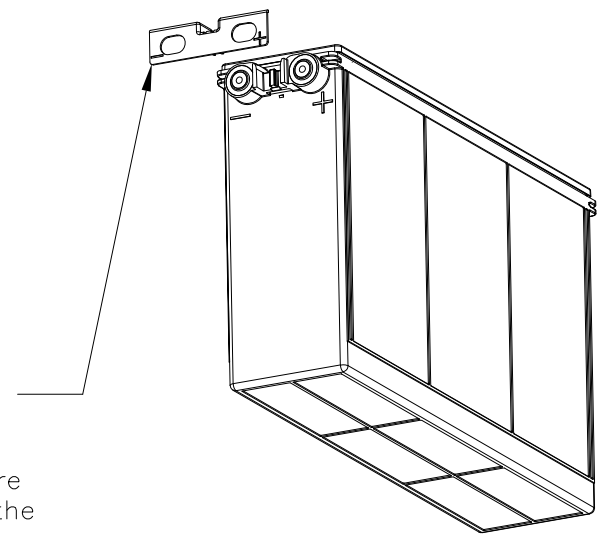


Place plastic divider, supplied with battery rack, between middle 2 batteries. (60)

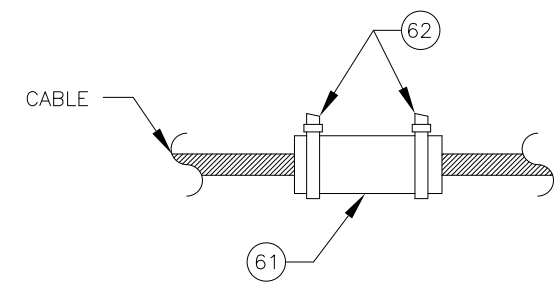


FOR FULL SEISMIC RATING, ALL ANCHOR BOLT LOCATIONS MUST BE USED.

BOTTOM VIEW
(RACK MOUNTING LOCATIONS)



Battery terminal covers must be removed to attach the battery straps. After the straps are attached, replace the covers.



ALL BATTERY CABLES THAT CROSS OVER ANY RACK EDGE IS INSULATED WITH ACRYLIGLASS "c" SLEEVING TO PREVENT ANY DAMAGE TO THE CABLE.

| | | |
|---|------------------------------------|----------------------------------|
| PROPRIETARY INFORMATION NOT TO BE COPIED, USED OR DISCLOSED WITHOUT PRIOR WRITTEN PERMISSION FROM UNIPOWER, LLC. | | |
| SIZE B | DOC TYPE / NUMBER J 110-7050-02 | ISSUE 6 |
| SCALE: NONE | SHEET: 3 OF 3 | FILE NAME: J110-7050-02_ISS_6 |

1 2 3 4