

SEE DETAIL "E", ON SHEET 2 FOR SIDE SHIELD INSTALLATION.

Add sleeving and ty-raps to all points where cables are secured to the battery rack. This will prevent cable from being damaged. (TYPICAL both sides)

Add sleeving and ty-raps to all points where "C" channel may come in contact with cable. This will prevent cable from being damaged. (TYPICAL both sides)

NOTES:

- ANCHORS NOT PROVIDED BY UNIPOWER, LLC.
- RECOMMENDED ANCHOR SIZE IS HILTI, HSL M12/25 OR EQUIVALENT
- ESTIMATED RACK ASSEMBLY WEIGHT, 300LBS. ESTIMATED FULL SYSTEM WEIGHT, 3000LBS.
- POSITIVE AND NEGATIVE BUS ARE NOT DESIGNED TO SUPPORT WEIGHT OF CABLE(S).
- SEE SHEET 2 FOR DETAILS.
- ITEM #21, CORD CLIP, SHIPPED LOOSE FOR CUSTOMER INSTALLATION.
- BATTERIES TO BE ORDERED SEPARATELY.
- FREE CABLE ENDS MUST BE PROTECTED FROM SHORT, USE ITEM #15. MAKE EACH CAP PER BREAKER SELECTION. STARTING WITH NUMBER 1 FOR THE RIGHT MOST BREAKER LOOKING FROM FROM THE FRONT.

SYSTEM PART NUMBER **110.7050.06**

BILL OF MATERIALS			
ITEM	QTY	PART NO.	DESCRIPTION
1	1	170.0501.00A	FA BATTERY RACK
2	1	111.3950.50	BATTERY DISCONNECT PANEL, AM1, 5 POSITION.
3	1	209.5501.10	GROUND RETURN BUS BAR
4	1	WIR02788	CABLE ASSY, #4 94" LG.
5	1	WIR02789	CABLE ASSY, #4 80" LG.
6	1	WIR02790	CABLE ASSY, #4 68" LG.
7	1	WIR02791	CABLE ASSY, #4 56" LG.
8	1	WIR02792	CABLE ASSY, #4 42" LG.
9	1	WIR02793	CABLE ASSY, #4 92" LG.
10	1	WIR02794	CABLE ASSY, #4 78" LG.
11	1	WIR02795	CABLE ASSY, #4 64" LG.
12	1	WIR02796	CABLE ASSY, #4 50" LG.
13	1	WIR02797	CABLE ASSY, #4 36" LG.
14	8	PH02948	CLIP, SIDE SHIELD
15	10	REQ3879	SHIPPING CAP, FOR #4 LUGS.(NOT SHOWN)
16	2	PH02931-11	SIDE SHIELD, FR PVC. 17.25" X 9.50"
18A	10	210.1292.00	BOLT, 3/8-16 X 1.00" S.S.
18B	20	212.2518.00	WASHER, FLAT 3/8" S.S.
18C	10	211.0506.01	NUT, HEX, "KEPS" 3/8"-16 S.S.
19	1	225.8531.00	LABELS: 1A-4E
20	5	RA02498-20.50	EDGE PROTECTOR, 20.50"
21	10	PH02932	CORD CLIP, .63" (SHIPPED LOOSE)
26	12	216.6050.00	CABLE TIE, 15" NYLON, BLACK
40	1	JN00193-1	LABEL: "POS"
41	1	JN00193-2	LABEL: "NEG"
61	6'	032.0002.01	SLEEVING
62	40	216.6020.00	TY-RAP
63	5	208.8500.50A	BRACKET,BATT RACK

ISSUES

ISSUE #	DESCRIPTION	ISS. BY ISS. DATE	APP. BY APP. DATE
1	SEE ECN 16513 Original release of documentation.	KEL 09/12/08	CJM 9/26/08
2	SEE ECN 16644 Switch breaker locations from (left to right) to (right to left)	KEL 12/02/08	MCM 12/4/08
3	SEE ECN 16790 MADE CORRECTIONS TO BOM AND DRAWING.	WD 4/14/09	MCM 4/15/09
4	SEE ECN 16798 MADE CORRECTIONS TO BOM AND DRAWING.	WD 4/22/09	MCM 4/22/09
5	SEE ECN 16821	WD 5/14/09	MCM 5/18/09
6	PCO# 44220 Updated LOGO from: C&D to: UNIPOWER	KEL 02/15/17	CJM 2/15/17

UNLESS OTHERWISE SPECIFIED DIMENSIONS ARE IN INCHES TOLERANCES ON:	APPROVALS		DATE
	HOLES ±	DRAWN K. E. LEWIS	CHECKED DBW
FRACTIONS ±1/32	CHECKED	APPROVED	9/25/08
DECIMALS (XX) ±0.020	APPROVED	CJM	9/26/08
DECIMALS (XXX) ±0.010	APPROVED		
ANGLES ±1/2°			

SQUARE CORNERS AND ANGLES ARE 90° UNLESS OTHERWISE SPECIFIED.

WORKMANSHIP:  
PER SPEC ENG032

MATERIAL:

FINISH:

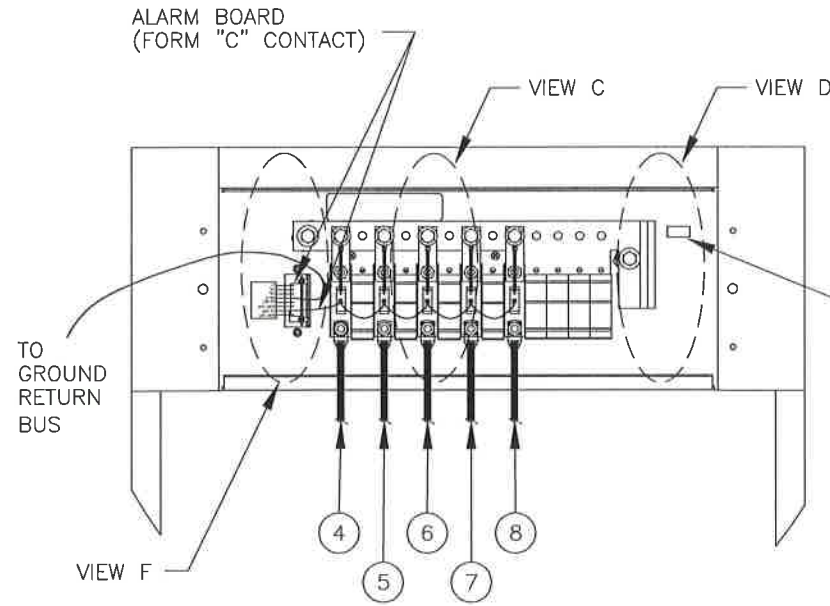
**PROPRIETARY INFORMATION**  
NOT TO BE COPIED, USED, TRANSMITTED, OR DISCLOSED WITHOUT PRIOR WRITTEN PERMISSION FROM UNIPOWER, LLC.



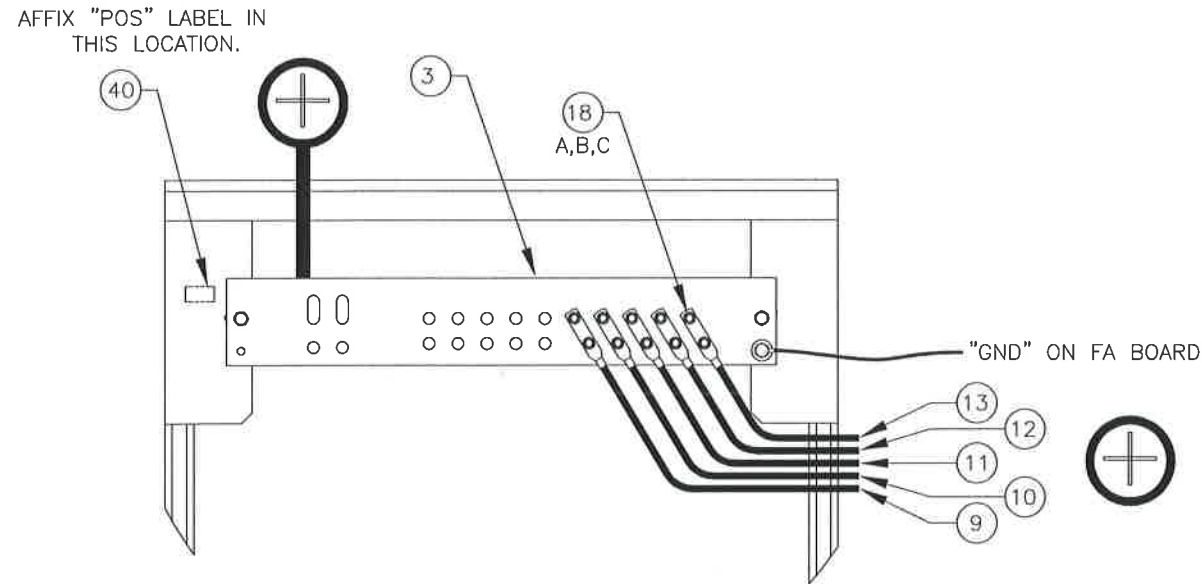
BATTERY SYSTEM,  
-48VDC, BRBK PNL & RETURN BUS  
5-TIER FA RACK (NEBS ZONE 2)

SIZE <b>B</b>	DOC TYPE / NUMBER J 110-7050-06	ISSUE 6
---------------	------------------------------------	------------

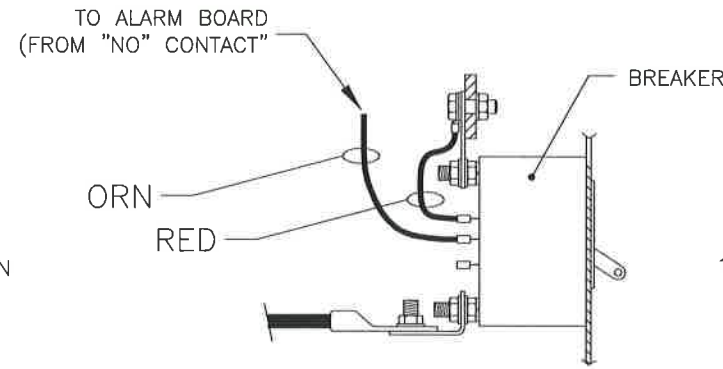
SCALE: NONE	SHEET: 1 OF 3	FILE NAME: J110-7050-06_ISS_6
----------------	------------------	----------------------------------



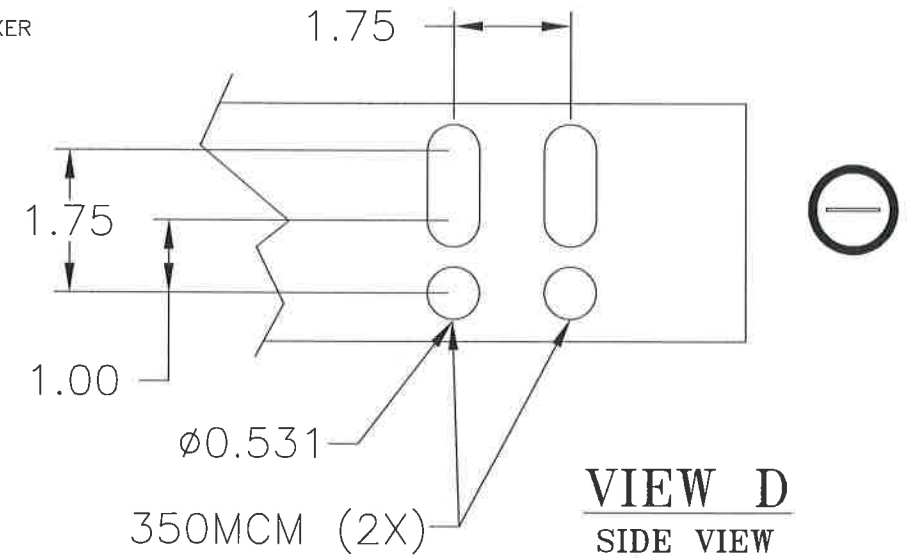
**VIEW A - A**  
REAR VIEW



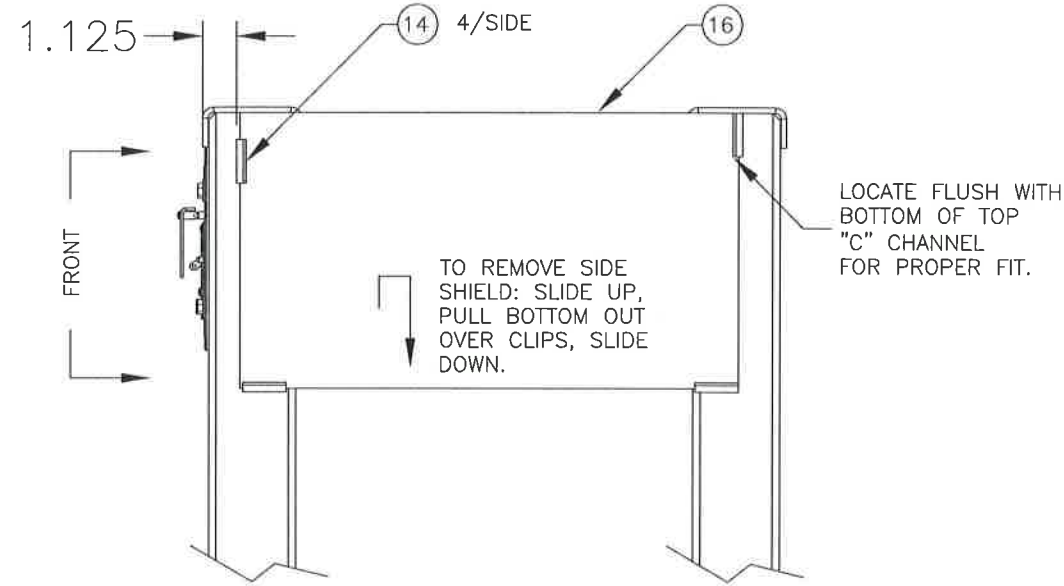
**VIEW B - B**



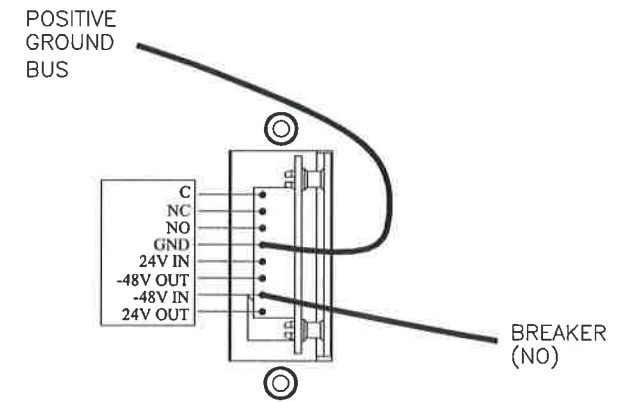
**VIEW C**  
SIDE VIEW



**VIEW D**  
SIDE VIEW



**VIEW E**  
SIDE VIEW

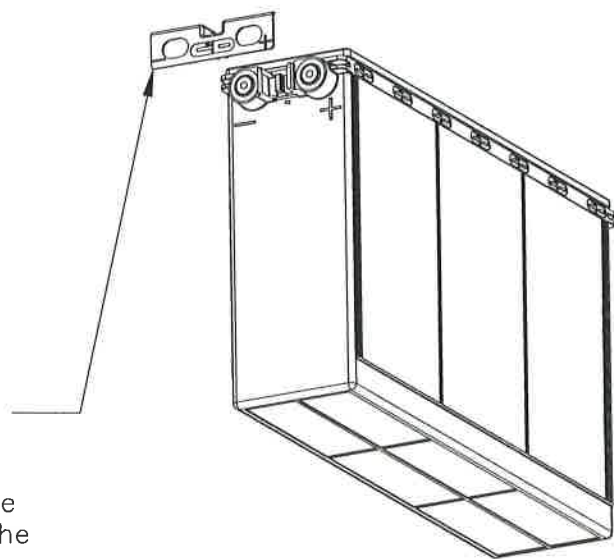


**VIEW F**  
REAR VIEW

NOTE:  
TYPICAL INSTALLATION  
OF PH02948, ON EACH  
SIDE OF RACK.

<b>PROPRIETARY INFORMATION</b> NOT TO BE COPIED, USED, TRANSMITTED, OR DISCLOSED WITHOUT PRIOR WRITTEN PERMISSION FROM UNIPOWER, LLC.		
SIZE <b>B</b>	DOC TYPE / NUMBER J 110-7050-06	ISSUE 6
SCALE: NONE	SHEET: 2 OF 3	FILE NAME: J110-7050-06_ISS_6

Battery terminal covers must be removed to attach the battery straps. After the straps are attached, replace the covers.



Ø0.813" (8X)  
[21mm]

FRONT OF RACK

4.15 [105mm]

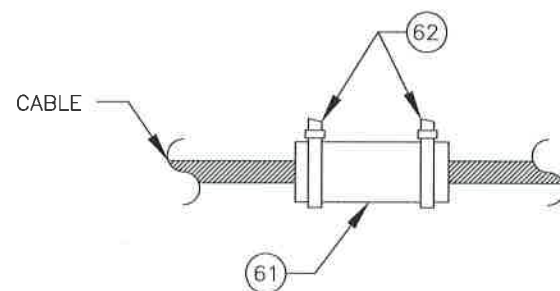
16.75  
[425mm]

2.62  
[67mm]

18.25  
[463mm]

FOR FULL SEISMIC RATING, ALL ANCHOR BOLT LOCATIONS MUST BE USED.

BOTTOM VIEW  
(RACK MOUNTING LOCATIONS)



ALL BATTERY CABLES THAT CROSS OVER ANY RACK EDGE IS INSULATED WITH ACRYLIGLASS "C" SLEEVING TO PREVENT ANY DAMAGE TO THE CABLE.

<b>PROPRIETARY INFORMATION</b>		
NOT TO BE COPIED, USED, TRANSMITTED, OR DISCLOSED WITHOUT PRIOR WRITTEN PERMISSION FROM UNIPOWER, LLC.		
SIZE <b>B</b>	DOC TYPE / NUMBER J 110-7050-06	ISSUE 6
SCALE: NONE	SHEET: 3 OF 3	FILE NAME: J110-7050-06_ISS_6