



**APPLICATION NOTE
BLUEstreak SERIES
PMBus Demonstration Program**

www.unipowerco.com

App Note No. PMB Rev 3
bluestreakpmbdemo-app-Rev3-0919.indd

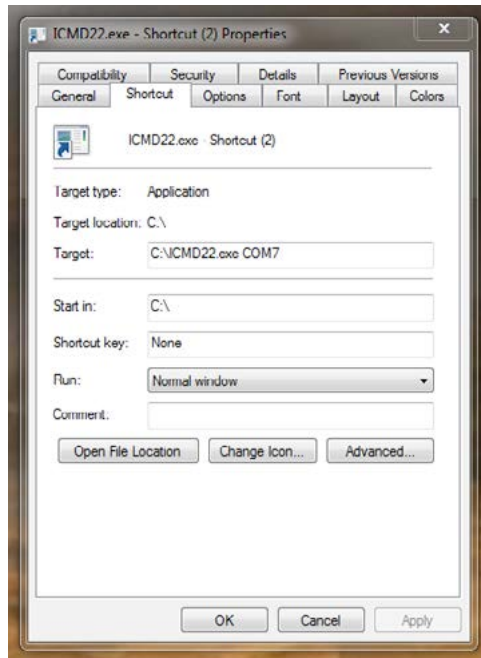
**© 2019 UNIPOWER LLC
All Rights Reserved**

North America & CALA: +1 954-346-2442 • EMEA: +1 561-990-3830 • sales@unipowerco.com

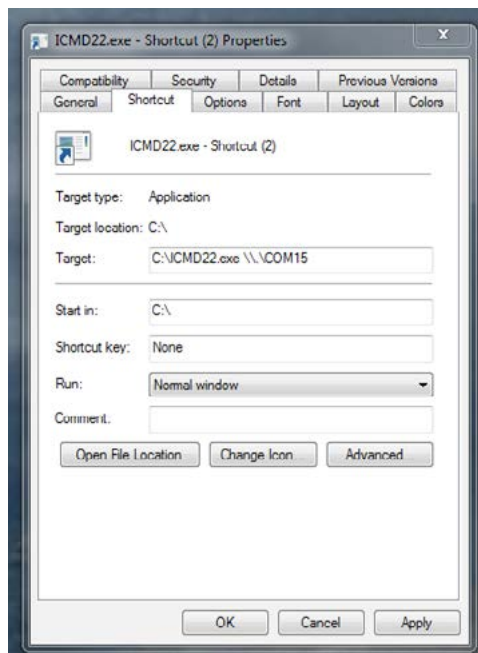
BLUEstreak SERIES

PMBus Demonstration Program

WARNING: Do not run this program from a command prompt within windows because the mouse may not work properly. You must create a desktop shortcut to the executable and then modify the properties of the shortcut to include the required COM port. If COM port 1 is used then no COM port need be specified. For COM ports above 9, you must use \\.\ before the COM port.



Example for COM7



Example for COM15

Using the USB port on the I2C-2-PC Adaptor

The I2C-2-PC Adaptor has an FTDI USB to Serial interface IC that can be used to provide a USB connection to the adaptor.

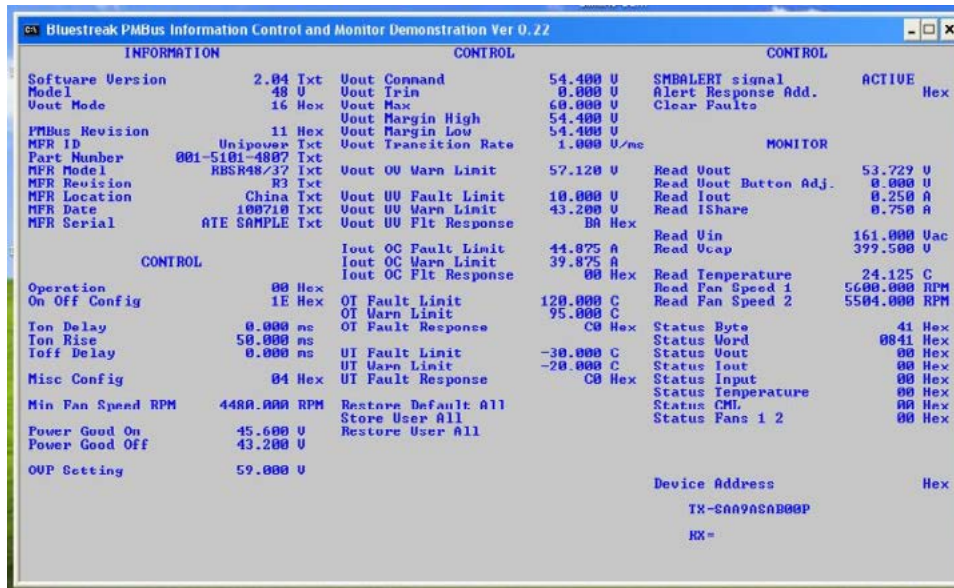
The Adaptor data sheet found at <http://www.i2cchip.com/pdfs/i2c2pc.pdf> describes how to connect to the adaptor using the USB interface.

1. Go to the FTDI website <http://www.ftdichip.com/Drivers/VCP.htm> and choose the driver for your computer.
2. Install the driver following the FTDI application note relevant to your computer.
3. Use Start/Control Panel/System/Hardware/Device Manager/Ports to find the comm port number allocated to the adaptor USB port.

- Set the link J3 on the I2C-2-PC Adaptor under the 9 way serial connector, towards the USB connector to select the USB connector.

How to use the program

When the program is started, it should look similar to the screen shot shown below.



If using the program with a BLUEstreak shelf, set all of the address switches to ON. This sets the address bits low and makes the addresses 0x20, 0x22, 0x24, 0x26 from left to right as seen from the front of the shelf. If using an evaluation board, set all address jumpers initially to '0' to set the address to 0x20.

To change the address being scanned, click on the text that says 'Device Address'. Type in the address of the module you would like to work on. E.g. type '20' for address 0x20.

The program will scan all parameters continuously for the address selected.

To change a parameter, just click on the text for that parameter and then enter the figure.

If the SMBALERT signal is active, the word 'ACTIVE' will appear in the top right of the program. Clicking on 'Clear Faults' should clear all the faults within the monitored unit unless there is a persistent fault in which case it will immediately become active again. The SMBALERT signal will be active after a unit is powered up until cleared.

This document is believed to be correct at time of publication and UNIPOWER LLC accepts no responsibility for consequences from printing errors or inaccuracies. Specifications are subject to change without notice.