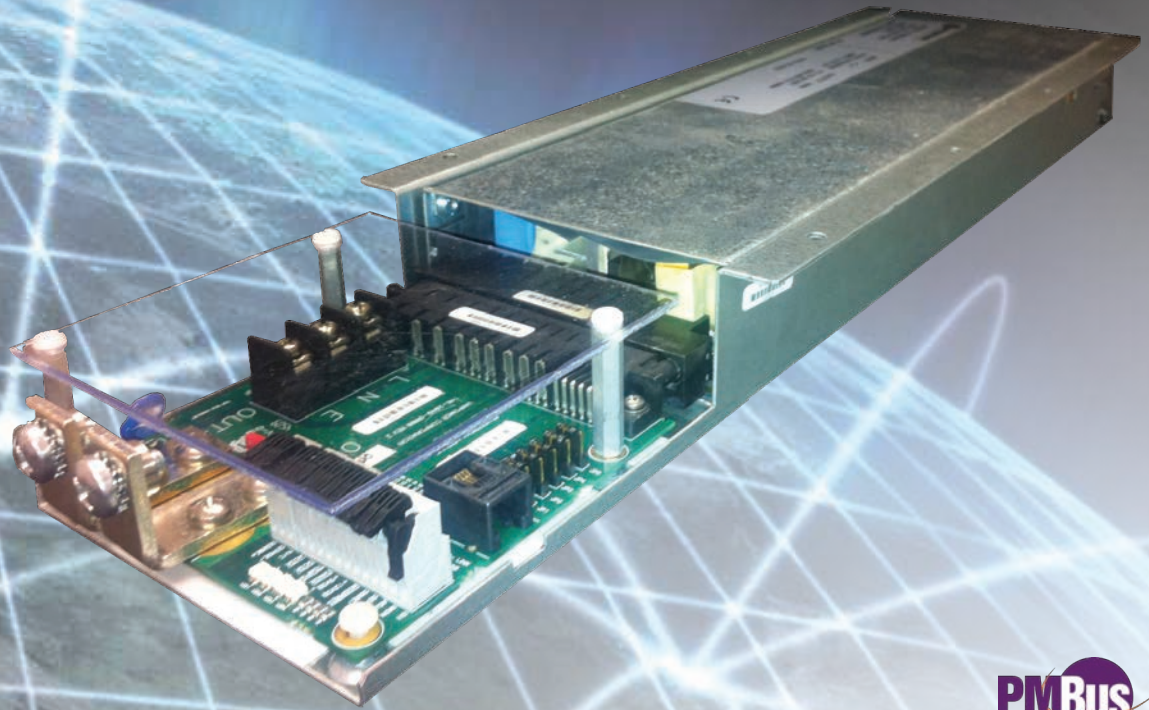


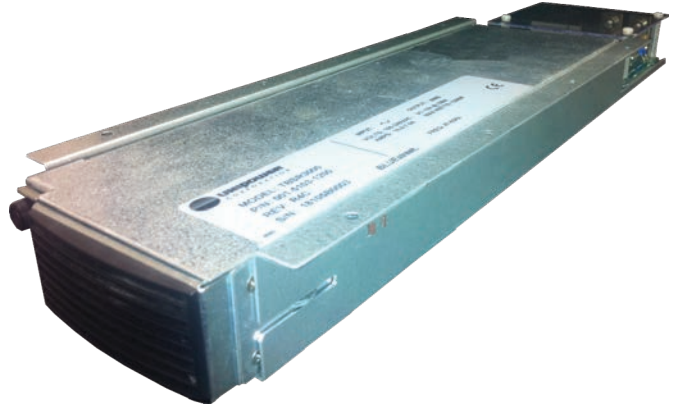
# CUSTOM SOLUTION: ES5091



**1200W / 2000W**  
**12VDC Output**  
**High Efficiency**  
**Operates from Generators**  
**Full PMBus Monitoring & Control**  
**Customized Form Factor**  
**Ruggedized for Vehicle Operation**



# CUSTOM SOLUTION: ES5091



## KEY SPECIFICATIONS

Input Range . . . . .	85-264VAC
Input Frequency . . . . .	47-63Hz
Output Power . . . . .	1200W/2000W High-Line
Efficiency . . . . .	92%
Output Voltages . . . . .	12VDC 5VDC Standby
Holdup Time . . . . .	20mS
Cooling . . . . .	Internal Fan, Variable Speed
Control Signals . . . . .	AC OK, DC OK, Temperature OK, Remote Adjust Current Monitor, Fan OK
Safety Standards . . . . .	UL60950-1, EN60950-1 2nd Edition
EMI, Conducted & Radiated . . . . .	FCC Part 15 Class B, EN55022 Class B
Reliability . . . . .	200,000 Hours
Mechanical . . . . .	Custom Form Factor Fast Replacement Design



**UNIPOWER's** Custom Product Team is highly experienced in working with customers from the early stages of spec definition through the actual development and production of one-of-a-kind power solutions.

Custom products require focus from concept through production. **UNIPOWER's** Custom Products Team is staffed with project engineers, technicians, manufacturing and quality personnel totally dedicated to meeting our customers' expectations. Our rapid response team is skilled at quickly developing custom products from **UNIPOWER's** broad base of proven, standard power circuits and components.

es5091-ds-revb-0714.ai

[www.unipowerco.com](http://www.unipowerco.com)



**UNIPOWER NORTH AMERICA**  
3900 Coral Ridge Drive, Coral Springs, Florida 33065, USA  
Tel: +1-954-346-2442 . Fax: +1-954-340-7901 . sales-northamerica@unipowerco.com

**UNIPOWER EUROPE**  
Parkland Business Centre, Chartwell Road, Lancing, BN15 8UE, ENGLAND  
Tel: +1-954-346-2442 . Fax: +1-954-340-7901 . sales-europe@unipowerco.com