

LVD400 & LVD600 SERIES

LOW VOLTAGE DISCONNECT PANELS

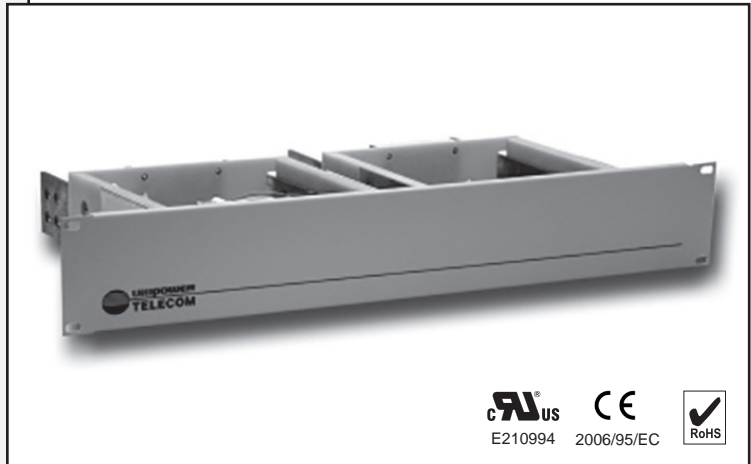
400A & 600A @ 24V & 48V

DESCRIPTION

Unipower's LVD400 and LVD600 Series of low-voltage disconnect panels are designed for maximum flexibility. They can be used for either load or battery disconnect.

The two mounting position (3.5 inches) high panels can be configured as single or dual (A/B) disconnects. The disconnect contactor is rated at 400 or 600 amperes.

Form C relay contacts indicate an LVD alarm. Disconnect and reconnect voltages are field settable. The A and B sections of the dual LVD panel can be separately configured for 24 or 48 volts and positive or negative ground. The LVD front panels can be specified for either a 19- or 23-inch relay rack mounting.



L V DISCONNECT PANELS

BASE MODEL	CONFIGURATION
LVD400-A	Single 400A
LVD400-A-B	Dual 400A
LVD600-A	Single 400A
LVD600-A-B	Dual 400A

To define order code see configuration guide on page 2.

FEATURES

- ◆ Two Mounting Positions High: 3.5"
- ◆ 19- or 23-Inch Rack Mounting
- ◆ Single or Dual (A/B) LVDs
- ◆ Current Capacity: 400A or 600A per Load
- ◆ Operating Voltage: 24 or 48VDC
- ◆ Positive or Negative Ground
- ◆ Form C Relay Alarm Contacts
- ◆ LVD in Series with Battery or Load
- ◆ Field Settable Disconnect & Reconnect Voltages

TWO YEAR WARRANTY

SAFETY CERTIFICATIONS

UL1950
CSA22.2, No. 60950
EN60950

www.unipowerco.com

NORTH AMERICA CALL: +1-954-346-2442 • EUROPE CALL: +44 (0)1903 768200

