

RELAY ALARM ADAPTOR

RELAY CONTACT OUTPUTS & REMOTE VOLTAGE ADJUST FOR SIGMA, RADIAN & BLUEstreak

DESCRIPTION

These alarm adaptor modules plug directly into the 25 way D-Type signal connector at the rear of a Sigma, Radian or BLUEstreak Series power shelf and convert the DC Good signal provided by each power module to a Form-C volts-free relay contact output.

A remote voltage adjustment feature is also provided on some version, enabling the user to trim the output voltage of the complete shelf by means of a multi-turn potentiometer.

The module also provides connections to allow daisy chaining of the share bus between multiple parallel connected shelves as well as remote sense connections.

All external connections to the module are made via spring clip terminals, eliminating the need for any tools other than wire strippers.

FEATURES

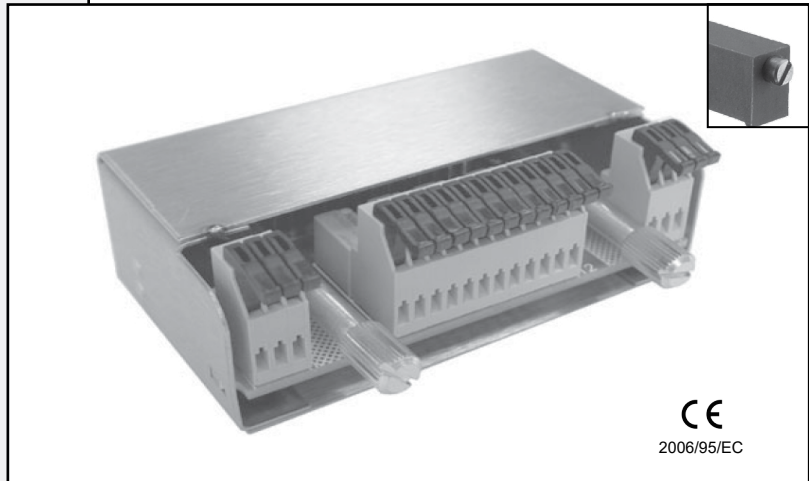
- ◆ Isolated Form-C Contacts
- ◆ Indicates DC Output Status for each Module
- ◆ Output Voltage Trim
- ◆ Daisy-chains Share Bus
- ◆ Provides Connections For Remote Sense
- ◆ Spring Clamp Connections (no tools)

THREE YEAR WARRANTY

SAFETY STANDARDS

UL60950-1 2nd Edition
 CSA22.2, No. 60950-1 2nd Edition
 EN60950-1 2nd Edition

www.unipowerco.com



ORDER CODES

ORDER CODE	FORM-C RELAYS	OUTPUT ADJUSTMENT	COMPATIBILITY
009-1005-0000	YES	NO	All
009-1011-0000	YES	YES	RADIAN *
009-1013-0000	YES	YES	SIGMA BLUEstreak

Includes TPCMQ Series dc/dc converter & DC input Front-Ends

SPECIFICATIONS

RELAY RATINGS

Switching Capacity (resistive load)..... 2A 30VDC / 0.6A 125VAC
 Switching Power (resistive load)..... 60W / 75VA max.
 Switching Voltage 110VDC / 125VAC max.
 Switching Current 2A max.

Isolations Voltage 1500Vrms for 1 minute
 10uA 10mVDC min.

OUTPUT VOLTAGE TRIM (when available) multi-turn potentiometer

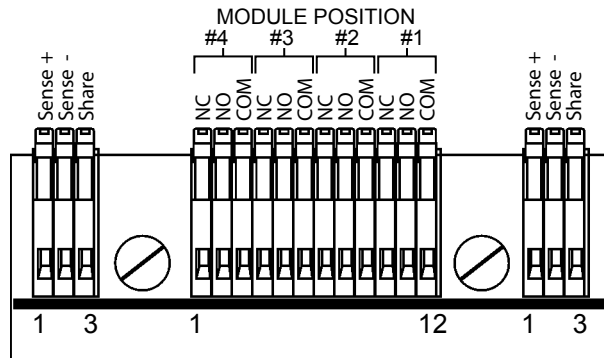
ENVIRONMENTAL

Operating Temp. Range -40°C to +70°C
 Humidity..... 0% to 95%, Non-Condensing
 ESD Bellcore GR-1089-Core and EN61000-4-2
 MTBF, 35°C (Bellcore)..... 1.6M Hours

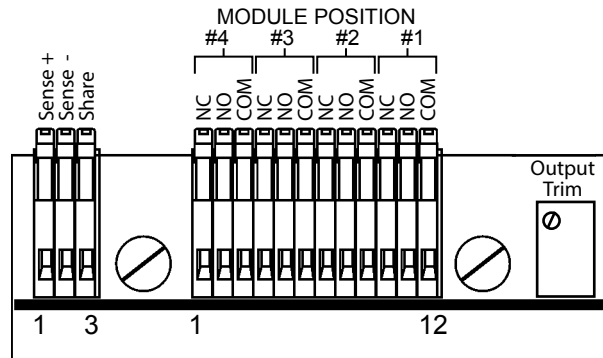
PHYSICAL

Case Material Steel
 Dimensions, Inches (mm)..... 1.14 H x 2.99 W x 2.24 D
 (29 x 76 x 57)
 Weight 0.22 lbs. (0.1 kg.)

CONNECTIONS



009-1005-0000 (no output trim)



009-1011-0000 & 009-1013-0000 (with output trim)

INSTALLATION & OPERATION

1. Plug directly into the 25 way D-type connector on the rear of the power shelf.
2. The maximum wire size that can be accepted by the spring clamp terminals is 22AWG.
3. On type 009-1005-0000 two sets of connections for remote sense and share are provided.
On types 009-1011-0000 and 009-1013-0000 one set of the above connections is provided, with the voltage trim potentiometer located in place of the second set.
4. When the remote sense facility is being used with multiple shelves it is recommended that the sense terminals are linked between individual shelves and only one pair of remote leads connected to the remote sense point.