

### FEATURES

- ◆ Full Medical Approvals
- ◆ No Load Power <500mW
- ◆ Outputs from 12VDC to 48VDC
- ◆ 200 Watts Convection
- ◆ Level V Efficiency
- ◆ Class B EMI



### TWO YEAR WARRANTY

### SAFETY CERTIFICATIONS

UL60601-1 3<sup>rd</sup> Edition  
 CSA22.2, No. 60601-1 3<sup>rd</sup> Edition  
 EN60601-1 3<sup>rd</sup> Edition

### STANDARD MODELS

Model Number	Output Voltage	Output Current	Output Power	Total Regulation	Ripple & Noise (Vp-p)
RHM-200-S12-U	12V	16.66A	200W	±5%	240mV
RHM-200-S16-U	16V	12.50A	200W	±5%	300mV
RHM-200-S19-U	19V	10.53A	200W	±5%	300mV
RHM-200-S20-U	20V	10.00A	200W	±5%	300mV
RHM-200-S24-U	24V	8.33A	200W	±5%	300mV
RHM-200-S36-U	36V	5.56A	200W	±5%	300mV
RHM-200-S48-U	48V	4.17A	200W	±5%	300mV

Note: All ratings for convection cooling.

## SPECIFICATIONS

Typical at Nominal Line, Full Load and 25°C Unless Otherwise Noted. Subject to change without notice.

### INPUT SPECIFICATIONS

Input Operating Range .....90-264VAC  
 Power Factor, full load .....>0.95 @ 115VAC, >0.90 @ 230VAC  
 Input Frequency .....47-63Hz  
 Input Current, RMS .....<3A @115VAC, <1.5A @ 230VAC  
 Inrush Current, cold start @ 25°C .....<35A Peak @ 115VAC  
 ..... <70A Peak @ 230VAC  
 Input EMI Filter .....EN55022 Curve B, FCC20780 pt. 15J Curve B  
 Input Protection .....Internal Fuse  
 Leakage Current .....<228µA @ 264VAC

### OUTPUT SPECIFICATIONS

Total Output Power, Convection .....200 Watts  
 Total Regulation <sup>1</sup> .....see model listing  
 Ripple & Noise, Pk-Pk <sup>2</sup> .....see model listing  
 Holdup Time, Full Load @ 115VAC .....16mS  
 Dynamic Response <sup>3</sup> .....300µS  
 Temperature Coefficient .....±0.04%/°C  
 Minimum Load .....0A  
 Overload Protection .....110-160% Full Load, Auto Recovery  
 Overvoltage Protection .....Shutdown & Latch off, AC recycle  
 Short Circuit Protection .....Auto Recovery  
 No Load Power Consumption .....<500mW

### GENERAL SPECIFICATIONS

Efficiency .....87% typical at Full Load  
 Switching Frequency .....75kHz  
 MTBF .....140,000 Hours  
 EMI Standards .....EN60601-1-2  
 Safety Standards .....UL60601-1 3<sup>rd</sup> Ed., CSA22.2 No.60601-1 3<sup>rd</sup> Ed.  
 EN60601-1 3<sup>rd</sup> Ed., IEC60601-1 3<sup>rd</sup> Ed.

### ENVIRONMENTAL SPECIFICATIONS

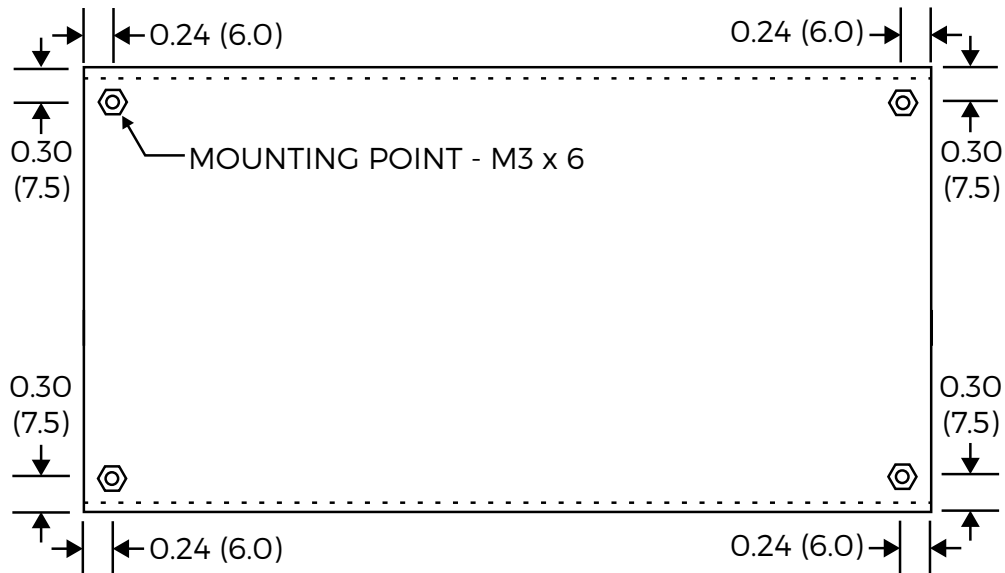
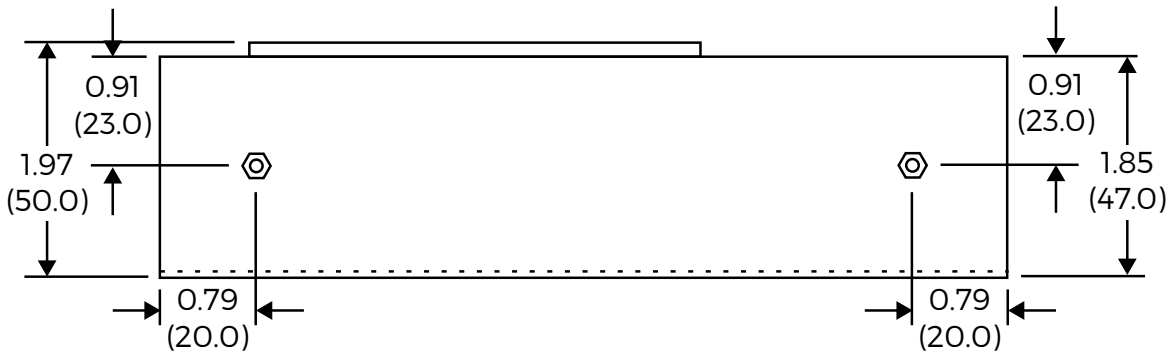
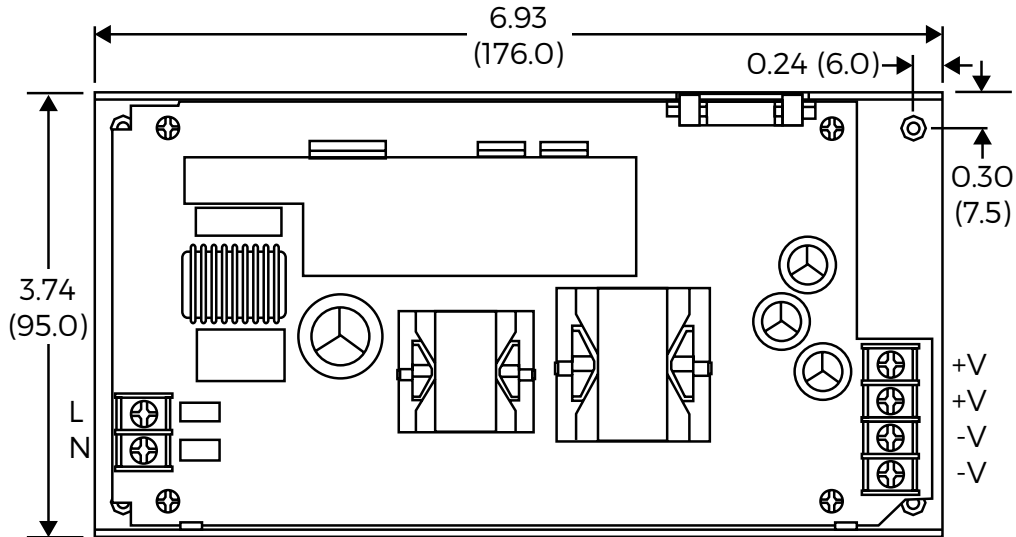
Operating Temperature .....0°C to 60°C Ambient  
 Derating .....2.5%/°C, 41°C to 60°C  
 Storage Temperature .....-10°C to +85°C  
 Humidity .....10% to 95%, non-condensing  
 Cooling .....Natural Convection

### PHYSICAL SPECIFICATIONS

Format .....U-Channel Chassis  
 Dimensions, Inches(mm) .....1.97 H x 3.74 W x 6.94 D  
 (50 x 95 x 176)  
 Weight .....1.28 lbs. (0.58 kg)

- NOTES:
1. No load to full load, including line regulation and load regulation.
  2. 20MHz bandwidth. Measure with 0.1µF ceramic and 10µF tantalum capacitors in parallel across the output.
  3. <4% deviation recovering to within 1% for 25% load change.

MECHANICAL SPECIFICATIONS & CONNECTION DETAILS



ALL DIMENSIONS IN INCHES (mm).