

10-1031



The Sageon® Shield battery monitor is a stand-alone solution for monitoring the status of 48V battery strings. The Sageon® Shield, as a member of the Sageon® SageView® software 'family', has the familiar SageView® look and feel. It is also an excellent addition for non-Sageon® plants, adding battery monitoring capability with the same SageView® software interface.

The Sageon® Shield can be used to monitor individual cell voltages of a battery during a float or equalization operation, during a charge/discharge, and up to 4 battery current channels during charge/discharge (with optional current transducers).

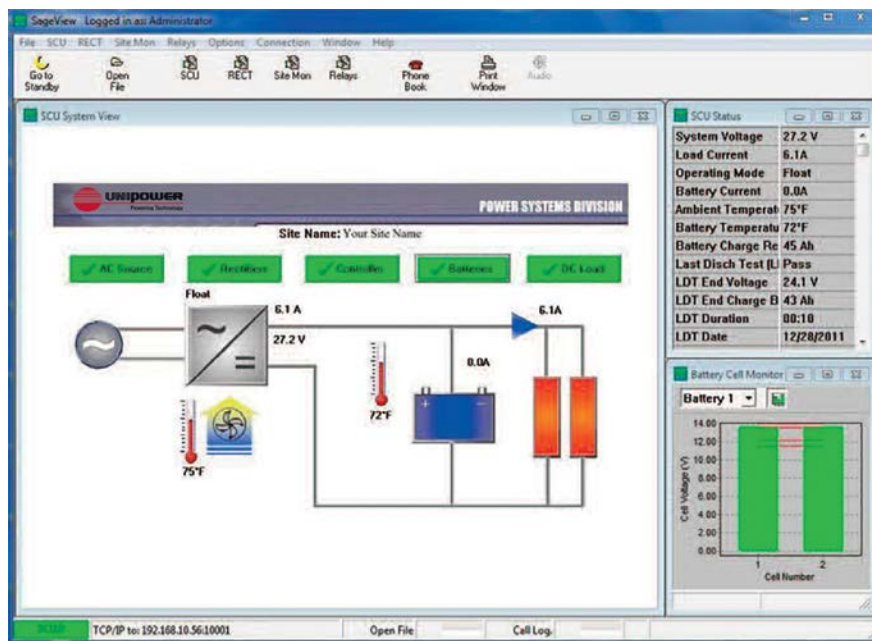
Each Sageon® Shield battery monitor is capable of monitoring the voltages of up to 24 cells or mono-blocks and can be expanded via the optional Sageon® Battery Monitor (SBM) to monitor 3 additional battery strings of 24 cells or mono-blocks each.

Using the TCP-IP/SNMP remote communications ability of the Sageon® Shield battery monitor and the SageView® software installed on your PC, cell voltages can be viewed in 'real time'. From within SageView®, your cell voltage data can be viewed in various formats, providing you with a snapshot of the health of your power plant's batteries.

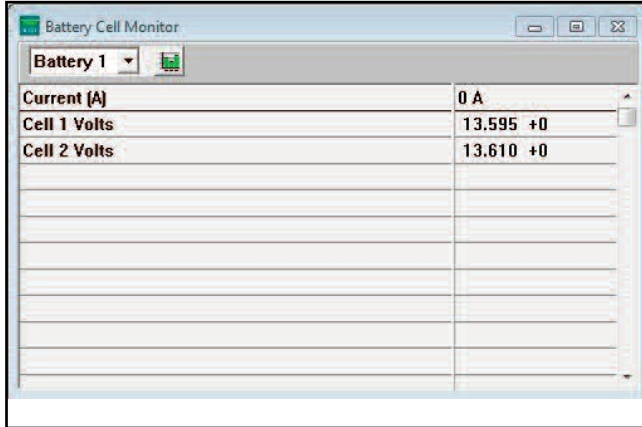
The Sageon® Shield ships as standard with: in-line power protection devices, 1 x 10' (~3m) ambient temperature sensor, 1 x 10' (~3m) battery temperature sensor, and a 25' (~7.6m) battery string (24 cell) wiring harness with 5/16" battery post adaptor terminals.

## THREE YEAR WARRANTY

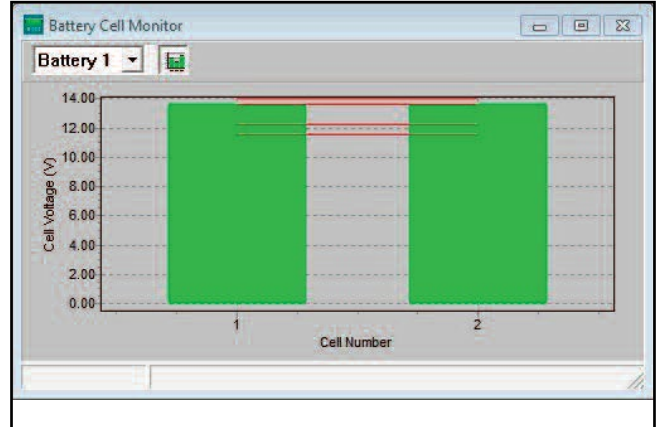
### SAGEVIEW® SCREENSHOT (MAIN BATTERY SCREEN)



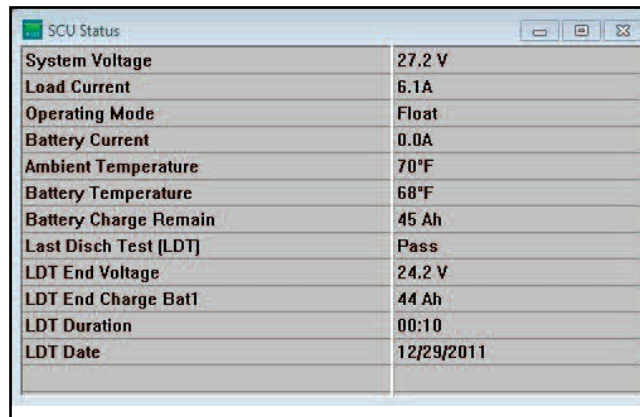
SAGEVIEW® SCREENSHOT  
(BATTERY CELL MONITOR - TEXT)



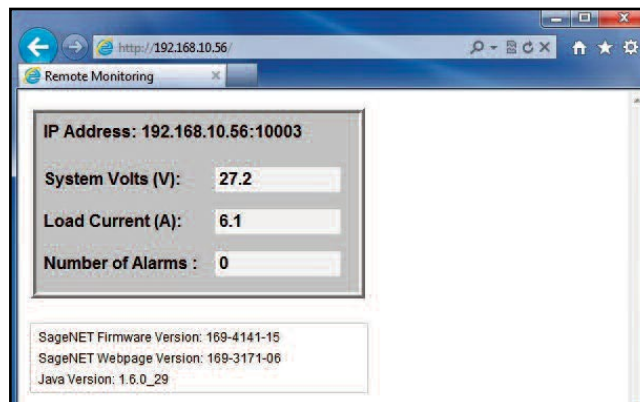
SAGEVIEW® SCREENSHOT  
(BATTERY CELL MONITOR - GRAPH)



SAGEVIEW® SCREENSHOT (SCU STATUS)



SAGEVIEW® SCREENSHOT (HTTP WEBPAGE)



**SAGEON® SHIELD ORDER CODE: 103.4023.01**

**ACCESSORIES & OPTIONAL EQUIPMENT**

Description	Order Code
23" Rack Mount Centering/Offset Kit	385.2999.70A
Sageon Battery Monitor (SBM)	103.4011.00
Temperature Concentrator Board	ERT190.6010
Temperature Sensor Cable - 10ft (3m)	385.5941.03
Temperature Sensor Cable - 10ft (3m)	385.5941.03
Temperature Sensor Cable - 20ft (6m)	385.5941.06
Temperature Sensor Cable - 50ft (15m)	385.5941.15
Temperature Sensor Cable - 100ft (30m)	385.5941.30
Cell Monitoring Wire Harness - 10ft	385.7812.10
Cell Monitoring Wire Harness - 25ft	385.7812.25
Cell Monitoring Wire Harness - 50ft	385.7812.50
Cell Monitoring Wire Harness - 100ft	385.7812.100
Battery Post Adaptor - #10 Ring	385.6151.03
Battery Post Adaptor - 1/4in Ring	385.6151.04
Battery Post Adaptor - 5/16in Ring	385.6151.05
Battery Post Adaptor - 3/8in Ring	385.6151.06
Battery Post Adaptor - 1/2in Ring	385.6151.07
Power Input - 5/16in Ring	385.6151.15
Current Transducer Kit - 200A, Closed Window (Circ. 1.25" dia.)	385.5971.200
Current Transducer Kit - 400A, Closed Window (Circ. 1.25" dia.)	385.5971.400
Current Transducer Kit - 600A, Closed Window (Rect. 2.51" x 0.82")	385.5971.600
Current Transducer Kit - 200A, Split Core (Circ. 0.84" dia.)	385.5972.200
Current Transducer Kit - 400A, Split Core (Circ. 0.84" dia.)	385.5972.400
Current Transducer Kit - 800A, Split Core (Rect. 4.00" x 1.57")	385.5972.800

**ENVIRONMENTAL SPECIFICATIONS**

Operating Temperature	-15°F (-25°C) to 158°F (70°C)
Storage Temperature	-15°F (-25°C) to 158°F (70°C)
Humidity	0 to 90% RH (non-condensing)
Altitude	13,100ft (3,993m)
Cooling	Natural Convection

**PHYSICAL SPECIFICATIONS**

Width	19" (483mm)
Height	1.75" (44mm) - 1RU
Depth	14.5" (368mm)
Weight	14.0 lbs (6 kg)