

12-1063

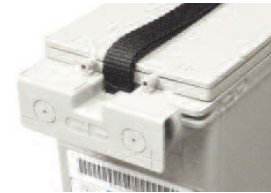


C&D TRUE FRONT ACCESS®

TEL Series Float Service



TEL12-115FN

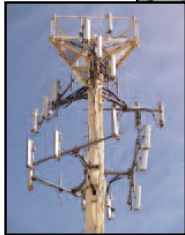


TEL12-115FNG

with TFA gas collection system



Typical Wireline Application



Typical Wireless Application

BENEFITS:

- Long Life Float Service Design
 - Confirmed via 3rd party Certification
 - Premium alloy and material components
- True Front Access Design
 - True Front Access gas collection system (optional)
 - True direct connect terminal for reliability
 - C&D Ohmic Ring® for accurate testing
 - Ideal fit for 19" Relay Racks
- Maximum Performance
 - Superior output due to direct terminal connection
 - Low internal resistance
- Compliant to major global specifications
 - British Standard BS 6290: Part 4: 1997
 - IEC 60896-21/22
 - Telcordia SR-4228
 - Eurobat Guide Classification: Long Life
 - Bellcore GR-63-CORE & GR-1089-CORE
 - UL94 V-0FR and Venting Operation
 - Non-Hazardous, not restricted for any transportation mode (air, water or land)

SPECIFICATIONS

Battery	Voltage Per Unit	Ampere Hour Capacity 8 Hour Rate @ 77°F (25°C) to 1.75 v/c	Ampere Hour Capacity 10 Hour Rate @ 68°F (20°C) to 1.80 v/c	Maximum Discharge Current	Short Circuit Current	Ohms Impedance 60 Hz (Ω)	Battery Weight
TEL12-115FN/FNG	12 V	108 Ah	102 Ah	800 Amperes	4000 Amperes	0.0030 Ohms	73 lbs/33 kg

SPECIFICATIONS

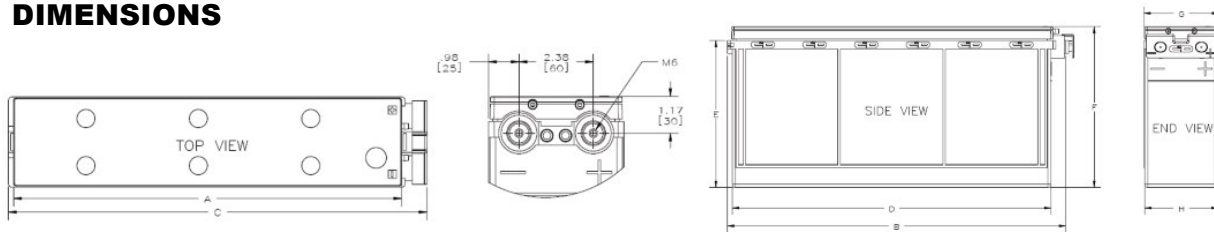
Ampere Hour Capacity to 1.75 Volts per Cell @77°F (25°C)
Discharge in Hours

Model	1	2	3	4	5	6	7	8	10	12	20	24
TEL12-115FN/FNG	71	82	89	95	100	103	105	108	110	113	120	122

Ampere Hour Capacity to 1.80 Volts per Cell @68°F (20°C)
Discharge in Hours

Model	1	2	3	4	5	6	7	8	10	12	20	24
TEL12-115FN/FNG	66	76	83	88	92	95	97	99	102	105	112	114

DIMENSIONS



MODEL	A		B		C		D		E		F		G		H	
	in	mm	in	mm	in	mm	in	mm	in	mm	in	mm	in	mm	in	mm
TEL12-115FN	18.5	469	19.5	496	20.1	511	18.4	468	8.5	216	9.1	232	4.3	110	4.2	107
TEL12-115FNG	18.5	469	19.5	496	20.1	511	18.4	468	8.5	216	9.3	235	4.3	110	4.2	107

* All dimensions in inches and (millimeters). All dimensions are for reference only. Contact a UNIPOWER Representative for complete dimensional information.

Operating Temperature Range with temperature compensation	Discharge: -40°F (-40°C) to +160°F (71°C) Charge: -10°F (-23°C) to +140°F (60°C)						
Nominal Operating Temperature Range	+68°F (20°C) to +80°F (27°C)						
Recommended Maximum Charging Current Limit	C ₂₀ /5 Amperes (24.0 A)						
Float Charging Voltage	13.5 to 13.8 VDC average per 12V unit						
Maximum AC Ripple (Charger)	0.5% RMS or 1.5% P-P of float charge voltage recommended for best results. Max AC ripple voltage allowed = 1.4% RMS (4% P-P) Max AC ripple current allowed = (C ₂₀ /20)						
Self Discharge	Battery can be stored up to 6 months at 77°F (25°C) before a freshening charge is required. Batteries stored at temperatures greater than 77°F (25°C) will require recharge sooner than batteries stored at lower temperatures. See C&D bulletin 41-7272, Self-Discharge and Inventory Control for details.						
Equalize charge and cycle service voltage	14.40 to 14.80 VDC average per 12V unit @ 77°F (25°C)						
Terminal: Inserted - Inter-unit connector and hardware provided	Threaded copper alloy insert terminal to accept M6 bolt						
Terminal Hardware Torque	110 in.-lbs. (12.4 N-m)						
Telcordia Part Numbers	<table border="0"> <tr> <td>Battery Part Number</td> <td>CLEI Code</td> <td>CPR</td> </tr> <tr> <td>TEL12-115FN/FNG</td> <td>PBMYAE8KRA</td> <td>215191</td> </tr> </table>	Battery Part Number	CLEI Code	CPR	TEL12-115FN/FNG	PBMYAE8KRA	215191
Battery Part Number	CLEI Code	CPR					
TEL12-115FN/FNG	PBMYAE8KRA	215191					