



INSTALLATION & OPERATING MANUAL
X75 SERIES
DC POWER POWER SYSTEM

www.unipowerco.com

Manual No. X75-10d
x75-man-Rev10d-0615.indd

© 2014-15 UNIPower LLC
All Rights Reserved

CONTENTS

1.0	INTRODUCTION.....	4
2.0	FEATURES & OPTIONS	5
3.0	SAFETY WARNINGS.....	6
4.0	WARRANTY (summary).....	7
5.0	UNPACKING AND INSPECTION.....	7
6.0	GENERAL SPECIFICATIONS.....	8
7.0	PRINCIPAL OF OPERATION	10
8.0	FRONT PANEL DESCRIPTION	11
9.0	REAR PANEL DESCRIPTION.....	12
10.0	LED Indicators	15
11.0	MAKING CONNECTIONS TO THE X75	16
12.0	INSTALLATION	20
13.0	USING THE CONTROLLER WEB BROWSER INTERFACE.....	23
Appendix 1 – SNMP MIB Information		47
Appendix 2 – Load LVD (special order)		51
Appendix 3 – Revision History.....		52

FIGURES

Figure 1	X75 Compact Integrated DC Power System	4
Figure 2	Block Schematic	10
Figure 3a	Front View with Breakers (configuration A).....	11
Figure 3b	Front View with GMT Fuses (configuration B).....	11
Figure 4	Rear Views of Base and Expansion Units.....	12
Figure 5	LED Indicators.....	15
Figure 6	Recommended Load Circuit Wire Sizes	16
Figure 7	Battery Temp. Probe & Alarm Relay Connector Pin-Out.....	17
Figure 8	Ethernet Connector Pin-Out.....	18
Figure 9	Auxiliary Connector Pin-Out.....	18
Figure 10	Input Current Ratings.....	20
Figure 11	Controller Status WEB Page (typical)	27
Figure 12	Rectifier Status WEB Page (typical).....	29
Figure 13	Rectifier I ² C Addressing	29
Figure 14	Controller Factory Calibration WEB Page (typical).....	31
Figure 15	Controller Site Installation WEB Page (typical).....	32
Figure 16	Alarm Configuration WEB Page (typical).....	36
Figure 17	Controller Network Settings (typical).....	39
Figure 18	Controller Alarm Log WEB Page (typical).....	42
Figure 19	Controller Control Panel WEB Page (typical).....	43
Figure 20	Controller System Settings WEB Page (typical)	44
Figure 21	SNMP Configuration WEB Page (typical)	45
Figure 22	Controller Help WEB Page (typical)	46
Figure 23	About UNIPOWER Telecom WEB Page (typical).....	46

1.0 INTRODUCTION

Gravitas X75 is an ultra-compact, integrated DC power system. The base system is a 1RU shelf holding up to three hot-swap rectifier modules. This system produces up to 1950 watts output at -54.4, +27.2 or +13.6VDC. It can also be operated as a 2+1 redundant system with up to 1300 watts output. The expanded system consists of a base shelf plus an expander shelf with a 2RU total height. This system holds up to six rectifier modules with up to 3900 watts output; it can be operated as a 5+1 redundant system with up to 3250 watts output. Each rectifier module is cooled by a fan that operates at a speed which is a function of load and temperature.

There are up to five circuit-breaker protected DC outputs or up to 10 GMT fuse protected outputs on the base system. A battery string breaker and a low-voltage battery disconnect are standard features. The expander shelf comes with a ribbon cable and connectors to link the signals between the two units at their rear panels. It also comes with bus bar links to parallel the rectifier output bus bars.

The base and expander shelves can also be operated as a battery backup, single feed power system (without load circuit breakers or fuses).

The remote access controller has LED visual indicators and Form C relay alarms. It is programmed by means of a remote PC web page display with communication by Ethernet LAN. Temperature compensated rectifier output is provided by means of an accessory TC probe. The X75 can be quickly installed by a qualified technician.



Figure 1 - X75 Compact Integrated DC Power System

2.0 FEATURES & OPTIONS

2.1 Standard Features

- ◆ 1RU High Base System
- ◆ 1RU High Expander Shelf
- ◆ Remote Control & Monitoring via TCP/IP Ethernet LAN
- ◆ Fully Integrated System
- ◆ Up to 72A at -54.4VDC
- ◆ Up to 75A at +27.2VDC or +13.6VDC
- ◆ Wide Range AC Input
- ◆ Up to 10 DC Load Circuits
- ◆ Circuit Breakers or GMT Fuses
- ◆ Quick and Easy Installation
- ◆ Universal 19/23-Inch Mounting Brackets
- ◆ SNMP reporting and Error Trapping

2.2 Options & Accessories

- ◆ Additional Probe for External Temperature Measurement ('T' Option)
- ◆ Various AC Line cords and DC cable sets

3.0 SAFETY WARNINGS

3.1 The X75 Compact DC Power System operates at voltages that could potentially be hazardous. Furthermore, inadvertent short circuiting of the system battery and/or rectifier by mis-connection or other error could be harmful. This product should be handled, tested and installed only by qualified technical persons who are trained in the use of power systems and are well aware of the hazards involved.

3.2 All connections to the X75 should be carefully checked for errors before applying power to it.

3.3 Specific Considerations for Rack Mounted Equipment

3.3.1 Elevated Operating Ambient - If installed in a closed or multi-unit rack assembly, the operating ambient temperature of the rack environment may be greater than room ambient. Therefore, consideration should be given to installing the X75 in an environment compatible with the maximum ambient temperature of 50°C at full rated load, and at 70°C at derated load at a derating factor of 2.5%/°C from 50°C to 70°C.

3.3.2 Reduced Air Flow - Installation of the X75 in a rack should be such that the amount of air flow required for safe operation of the equipment is not compromised.

3.3.3 Mechanical Loading - Mounting of the X75 in the rack should be such that a hazardous condition is not achieved due to uneven mechanical loading.

3.3.4 Circuit Overloading - Consideration should be given to the connection of the X75 to the supply circuit and the effect that overloading of the circuits might have on overcurrent protection and supply wiring. Appropriate consideration of the X75 nameplate ratings should be used when addressing this concern.

3.3.5 Reliable Earthing - Reliable earthing of rack-mounted equipment should be maintained. Particular attention should be given to supply connections other than direct connections to the branch circuit (e.g. use of power strips)."

3.4 The X75 is intended only for installation in a "RESTRICTED ACCESS LOCATION".

3.5 Input/output short circuit ratings are 5K AIC for terminals connected to breakers and 450 AIC for terminals connected to GMT type fuses.

- 3.6 The controller unit integral to the X75 is fitted with a replaceable battery.

CAUTION: RISK OF EXPLOSION IF BATTERY IS REPLACED BY AN INCORRECT TYPE. DISPOSE OF USED BATTERIES ACCORDING TO THE INSTRUCTIONS.

4.0 WARRANTY (summary)

X75 Series DC power systems are warranted for two (2) years from date of shipment against defects in material and workmanship. This warranty does not extend to products which have been opened, altered or repaired by persons other than persons authorized by the manufacturer or to products which become defective due to acts of God, negligence or the failure of customer to fully follow instructions with respect to installation, application or maintenance.

For a complete text of UNIPOWER's warranty conditions please request a copy from your local Sales Office.

5.0 UNPACKING AND INSPECTION

- 5.1** This X75 DC power system was carefully tested, inspected and packaged for shipment from our factory. Upon receipt the unit should be carefully unpacked and inspected for any damage in shipment.
- 5.2** If there is evidence of damage, **do not attempt to install the unit.** The freight carrier should be notified immediately and a claim for the cost of the X75 should be filed with the carrier for direct reimbursement. Be sure to include the model and serial number of the damaged unit in all correspondence with the freight carrier. Also save the shipping carton and packing material as evidence of damage for the freight carrier's inspection.
- 5.3** UNIPOWER will cooperate fully in case of any shipping damage investigation.
- 5.4** Always save the packing materials for later use in shipping the unit. Never ship the system or the rectifier modules without proper packing.

6.0 GENERAL SPECIFICATIONS

6.1 Inputs

Supply Voltage: 85-264VAC Single Phase
Each rectifier position is supplied via an individual IEC60320 C14 Inlet Socket.

A 3-phase supply may be connected provided that the voltage presented to each individual rectifier position does not exceed 264VAC.

Supply Current: Max 9A input @ 85-264VAC per inlet socket.

Battery Input: Direct connection to DC output bus or via protection breakers.

Digital alarm inputs: Volts free contact input*

*Volts free contacts are internally pulled up to 5V with reference to rectifier negative sense, these lines should not be tied to anything other than volts free contacts or floating opto-coupler outputs.

Temperature probes: Sensor with output current proportional to temperature.

6.2 Outputs

Pluggable Breakers: Up to 5 circuits, 30A max. per circuit.

GMT Fuses: 10 circuits, 12A max. per circuit.

Alarm Relay Contacts: Form C, 1A max at 30VDC.

Ethernet: 10/100 Base T.

6.3 Protection

Supply Input: Each rectifier is individual fused internally.

Battery: 100A Magnetic Circuit Breaker.

Output Distribution: According to installed circuit breakers or fuses.

Bulk DC Bus: Rectifier Current Limiting / Battery Breaker.

6.4 Safety

The X75 system is compliant with UL60950-1, EN60950-1, CSA22.2-60950-1 and all other derivatives of the core IEC60950-1 standard 2nd Edition when installed correctly within a restricted access environment.

The X75 system is CE marked to indicate conformance to the European Union's Low Voltage and EMC Directives.

6.5 EMC

The X75 complies with the following Norms when correctly installed.

Conducted Emissions:	EN55022, level A
Radiated Emissions:	EN55022, level A
ESD:	EN61000-4-2, level 4, criterion A - 8kV contact, 15kV air.
Radiated Immunity:	EN61000-4-3, level 3, criterion A - 10V/m.
Surges (power ports):	EN61000-4-5, level 1, criterion A - 500V

6.6 Environmental

Operating Temperature:	-20°C to 70°C, derating 2.5%/°C from 50°C to 70°C
Storage Temperature:	-40°C to 75°C
Humidity:	0% to 95% Non-Condensing

6.7 Physical Specification

Case Material:	Steel
Finish:	Clear Passivated
Dimensions:	1.72H (43.7) x 17.2W(437) x 14.47D(368)
Rack Width:	19" or 23" using dual purpose kit supplied. NOTE: Mid-mount is recommended when used in free space.

7.0 PRINCIPAL OF OPERATION

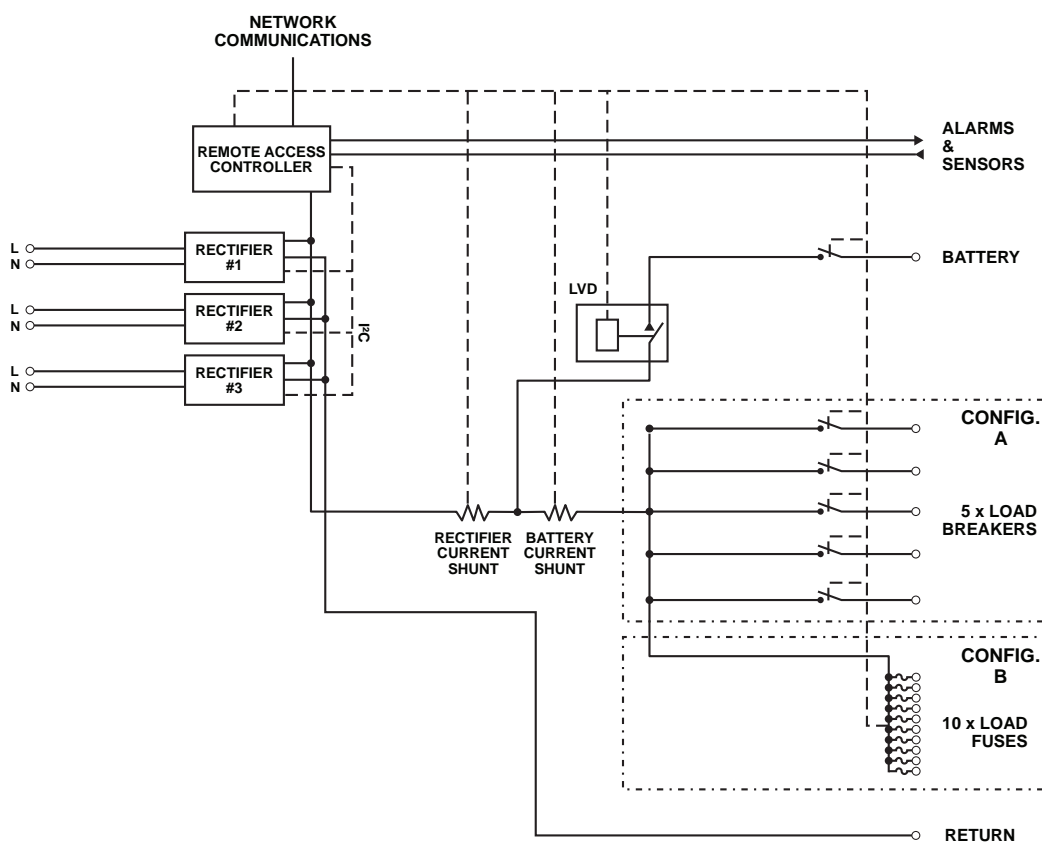


Figure 2 - Block Schematic

- 7.1** 85-264VAC is supplied directly to each of the rectifiers which produce a nominal -48VDC, +24VDC or +12VDC output.
- 7.2** Following a current shunt to measure the rectifier current, the rectifier DC output is fed to the battery terminals via the LVD (Low Voltage Disconnect, current shunt and a 100A circuit breaker.
- 7.3** The rectifier DC output is also fed to the loads via up to 5 circuit breakers (configuration A) or 10 fused circuits (configuration B).
- 7.4** The management unit monitors and controls the rectifiers via an I²C interface and also checks the status of the DC load and battery breakers/fuses.
- 7.5** The management unit monitors external sensors and provides alarms.

8.0 FRONT PANEL DESCRIPTION

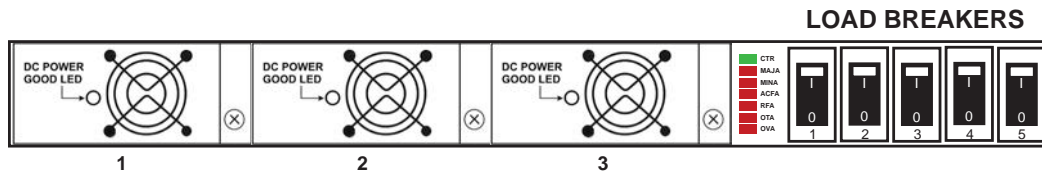


Figure 3a - Front View with Breakers (configuration A)

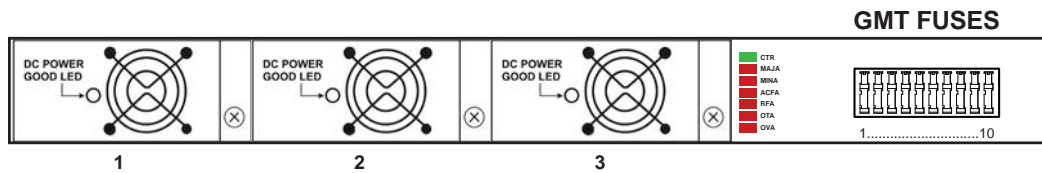


Figure 3b - Front View with GMT Fuses (configuration B)

Figures 3a and 3b show the two system configurations as viewed from the front with breakers and fuses respectively. Following is a description of each section.

- 8.1** From left to right there are 3 rectifier slots. Each slot can accept one rectifier from the Sigma Series rated up to 650W output power. Only identical model rectifiers of appropriate output voltage may be installed at the same time. For example, a nominal -48V system may contain between 1 and 3 model RSG48/10-Z OR between 1 and 3 model RSG48/12-Z but not a mixture of the two types.
- 8.2** To the right of the rectifiers are 7 LED indicators which display various status and alarm conditions. These are described in more detail in section 10.
- 8.3** On the right hand side of the unit is the DC distribution section which may contain between 1 and 5 circuit breakers (configuration A) or a 10-way GMT fuse block (configuration B).

9.0 REAR PANEL DESCRIPTION

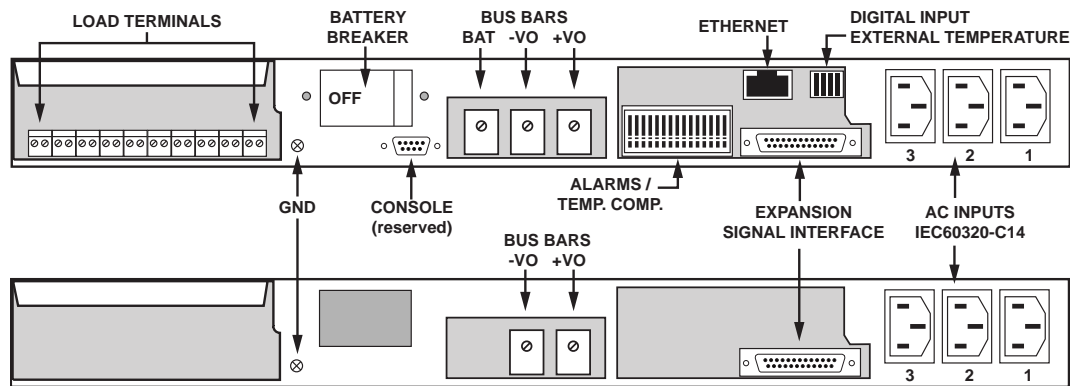


Figure 4 - Rear Views of Base and Expansion Units

Figure 4 shows the base and expansion unit as viewed from the rear. Following is a description of each section.

- 9.1** On the left hand side of the Base Unit, viewed from the rear, is a bank of screw terminal blocks for the DC load connections.

When the Circuit Breaker option has been specified two connections are provided for Load and Return for each breaker position.

When the GMT Fuse option has been specified one connection is provided for Load and Return for each fuse position.

- 9.2** To the right of the Load connection terminals is the Battery Breaker. This is a magnetic circuit breaker rated at 100A. This circuit breaker provides two functions.

9.2.1 In the first instance it enables the user to disconnect the batteries from the system for maintenance, replacement or other purposed.

9.2.2 The second function is to protect the batteries against excessive charge or discharge currents.

- 9.3** To the right and below the battery breaker there is a 9-way D sub connector marked RS232.

This connector provides a 'console' only function to UNIPOWER service personnel and should not be connected to for any other purpose.

9.4 In the center of the unit are three bus bar terminals.

9.4.1 To the left side is the VB or BAT terminal. This is connected to the ‘hot’ or ‘feed’ side of the battery.

9.4.2 In the middle is the –V or –VO terminal. This is the ‘negative’ output of the rectifier bus.

9.4.3 To the right side is the +V or +VO terminal. This is the ‘positive’ output of the rectifier bus.

9.4.4 Battery connection for -48VDC systems is as follows:
+Ve battery terminal connects to the +V terminal.
–Ve battery terminal connects to the VB terminal.

Note that in -48VDC systems the +V terminal is internally connected to chassis ground.

9.4.5 Battery connection for +24VDC and +12VDC systems is as follows:
+Ve battery terminal connects to the VB terminal.
–Ve battery terminal connects to the –V terminal.

Note that in +24VDC and +12VDC systems the -V terminal is internally connected to chassis ground.

9.4.6 When the system is required to provide a bulk feed output without using the internal distribution the +V and –V terminals are used to provide this feed to the load.

9.4.7 When an expansion shelf is used to increase the overall capacity of the system the +V and –V terminals of the expansion unit should be bussed together with the +V and –V terminals of the system unit respectively using the supplied link bars.

9.5 Immediately to the right of the bus bar terminals is a bank of 15 Spring Clamp Terminals designated J4. These terminals provide connections for the battery temperature compensation probe and the relay alarm outputs. They are described in detail in section 11.

9.6 Next to J4 is a 25-way Sub-miniature D-Type connector, designated J1, which is used to connect various signal and control lines between a base unit and an expansion shelf.

Expansion shelves are supplied with a short cable to link the J1 connectors between the base unit and the expansion shelf.

9.7 Above J1 is a 4-way Spring Clamp Terminal connector. This connector, designated J2, provides terminations for the auxiliary digital alarm input and the optional external temperature probe. The pin-out for this connector is described in section 11.

9.8 To the left of J2 is the Ethernet TCP/IP connector (J3). This connection uses a standard RJ45 Network connector. It is used to connect either to a Local Area Network or directly to a PC with network connection, the latter using a standard cross-over cable.

The primary means of setting up the X75 unit is via it's built-in WEB server, which is accessed using a WEB browser via this Ethernet TCP/IP connection.

9.9 At the right hand side of the base unit and also the expansion shelf are three IEC60320 C14 inlets. These provide individual AC input feeds to each of the 3 rectifier slots.

The X75 employs UNIPOWER Sigma Series rectifiers which operate from a Universal 85-264VAC 50-60Hz single phase supply. The system is designed so that various single and 3-phase supply connections can be made. For example, in the U.S. it might be desirable to connect each rectifier between two 120VAC phases; in which case each rectifier is operating at 208VAC.

IMPORTANT NOTE: DO NOT CONNECT THE UNIT SUCH THAT MORE THAN 264VAC WILL BE PRESENT BETWEEN THE LIVE AND NEUTRAL TERMINALS OF ANY ONE INLET SOCKET. SUCH CONNECTION MAY BE HAZARDOUS, WILL DAMAGE THE UNIT AND INVALIDATE THE WARRANTY.

10.0 LED Indicators

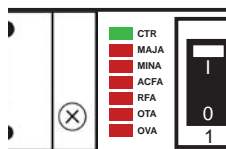


Figure 5 - LED Indicators

During normal operation there will be one green LEDs displayed as shown in figure 5 above.

The LED indicators provide visual indication of both status and alarm conditions as described below:

- CTR – **GREEN** – Indicates that the unit has power and is functioning normally.
- MAJA – **RED** – Indicates a ‘Major’ (Immediate Response) alarm condition.
- MINA – **RED** – Indicates a ‘Minor’ (Scheduled response) alarm condition.
- ACFA – **RED** – Indicates an AC supply failure.
- RFA – **RED** – Indicates a Rectifier module failure.
- OTA – **RED** – Indicates that one or more of the monitored temperatures is too high.
- OVA – **RED** – Indicated that the system Bus Voltage is too high.

11.0 MAKING CONNECTIONS TO THE X75

11.1 DC Load Connections

The DC load distribution connections at the rear left of the unit are clearly marked as follows:

11.1.1 Circuit breaker option.

For each load circuit there are two terminals marked V1, V2, V3, V4 and V5 respectively for the DC 'feed' and two marked RTN for the DC 'return'.

11.1.2 GMT Fuse option.

For each load circuit there is one terminal marked V1 through to V10 respectively for the DC 'feed' and one marked RTN for the DC 'return'.

Note that in the case of -48VDC system the 'feed' terminals are at a negative potential with respect to the 'return' terminals. In the case of +24VDC and +12VDC systems the 'feed' terminals are at a positive potential with respect to the 'return' terminals.

When connecting to the DC load terminals it is important to ensure that the cables used are adequately sized to carry the expected load current for the circuit in question.

The maximum current rating for the individual load terminals is 32A, but where long cable runs to the load are expected care should be taken to avoid unacceptable cable voltage drop; this is most likely to occur at currents in excess of 20A if only a single feed and return cable are employed. It is recommended that for circuits where a 20A or greater breaker is fitted pairs of feed and return cables are installed.

The terminals can accommodate wire sizes in the range #24AWG to #12AWG. The table below gives recommended cable sizes for the available circuit capacities assuming semi-confined conditions.

Circuit Rating	Minimum Cable Size
½A, ¾A, 1A, 1½A, 2A, 2½A	24AWG
3A, 5A	22AWG
10A, 12A	18AWG
15A	16AWG
20A	14AWG or 2 x 18AWG
25A, 30A	12AWG or 2 x 16AWG

Figure 6 - Recommended Load Circuit Wire Sizes

11.2 Alarm Relay and Battery Temperature Probe Connections – J4

Connection to the Form-C alarm relay outputs is made through a 15-way spring clamp terminal connector. There are a total of 4 relay outputs with Normally Open, Normally Closed and Common Contacts available for connection. The individual relays contact sets are fully isolated and may be floated from GROUND by up to 100V. Maximum contact current and voltage are 1A and 30V (DC or AC) respectively.

This connector accommodates wire sizes in the range #28 to #20AWG.

The alarm relays are designated K1 to K4. K1 and K2 are pre-programmed for MAJOR and MINOR alarm conditions by default. K3 and K4 are not programmed for any alarm function.

The function of each alarm may be programmed using the Alarm Configuration WEB page described later in section 13.

Connection of the supplied battery temperature probe, if required, is made using terminals 1 and 3 of this same spring clamp terminal connector.

J4 CONNECTIONS	
TERMINAL	FUNCTION
1	BATT. TEMP. PROBE -
2	Not Used
3	BATT. TEMP. PROBE +
4	K1 - MAJ ALARM – N/C
5	K1 - MAJ ALARM – COM
6	K1 - MAJ ALARM – N/O
7	K2 - MIN ALARM – N/C
8	K2 - MIN ALARM – COM
9	K2 - MIN ALARM – N/O
10	K3 – FREE ALARM – N/C
11	K3 – FREE ALARM – COM
12	K3 – FREE ALARM – N/O
13	K4 – FREE ALARM – N/C
14	K4 – FREE ALARM – COM
15	K4 – FREE ALARM – N/O

Note that terminal 1 is to the left when viewed from the rear of the system.

Figure 7 - Battery Temp. Probe & Alarm Relay Connector Pin-Out

11.3 Ethernet Connection – J3

The X75 is connected to a TCP/IP LAN (Local Area Network) or directly to a PC using connector J3. This is a standard RJ45 network connector allowing connection of any generally available Ethernet cable. Note that if the X75 is to be connected directly to a PC rather than a LAN then a cross-over Ethernet cable will be required.

J3 CONNECTIONS	
TERMINAL	FUNCTION
1	TX +
2	TX -
3	RX +
4	Not Used
5	Not Used
6	RX -
7	Not Used
8	Not Used

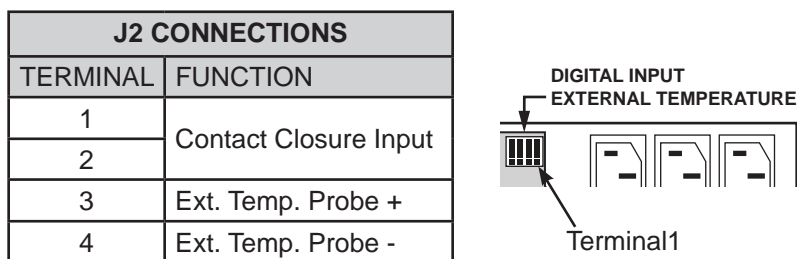
Figure 8 - Ethernet Connector Pin-Out

11.4 Auxiliary Connections – J2

Auxiliary connector J2 provides connections for an external temperature probe which can be supplied optionally with the system and for a single volt free contact closure input. This connector accommodates wire sizes in the range #28 to #20AWG.

NOTE: Any sensor, such as a switch or relay, that is connected to the digital input MUST be galvanically isolated.

The optional temperature probe is identical to the battery temperature probe that is supplied as standard, so there is no risk of mixing the two up on receipt.



Note that terminal 1 is to the right when viewed from the rear of the system.

Figure 9 - Auxiliary Connector Pin-Out

11.5 Expansion shelf connector – J1

This connector is used to jumper the necessary signal and control functions for the rectifiers that are installed in an optional expansion shelf back to the base unit. The functions and pin-out are not described in detail as these are internal to the general operation of the unit. A link cable is supplied with the EX75 chassis.

11.6 RS232 Console

This connector is reserved for UNIPOWER factory use.

12.0 INSTALLATION

The X75 can be mounted in either 19" or 23" racks by using the supplied brackets. Mount it from the front of the rack using the correct offsets to align with existing rack-mounted equipment. Once mounted in the rack the following connections must be made with the unit switched off.

CAUTION: Re-read the Safety Warnings and Precautions in Section 3. All power should be OFF for the input and output loads before making connections. Connection of the X75 chassis to frame ground should be made first. If the X75 has been turned on before installation connections, it should be turned off and given a 5-minute waiting period for all internal energy storage capacitors to be discharged.

12.1 Input AC Power Connection

A 3-wire AC power line should be connected to the input IEC connectors but not plugged into the AC power source. The line, neutral and ground connections should be carefully observed when making the AC connections. The AC line cord should be sized to safely carry 15 amperes AC each, minimum.

MODEL	Vin AC	Vout DC	WATTS	A @ 120Vac	A @ 240Vac
RSJ48/12-Z	85-264	54.4	653	6.5	3.2
RSG48/10-Z	85-264	54.4	550	5.4	2.7
RSF48/7-Z	85-264	54.4	400	4.0	2.0
RSG24/18-Z	85-264	27.2	500	5.0	2.5
RSF24/13-Z	85-264	27.2	350	3.5	1.7
RSG12/33-Z	85-264	13.6	450	4.4	2.2
RSF12/22-Z	85-264	13.6	300	3.0	1.5

Note: ratings given are at nominal voltage for sizing breakers. Label rating may be greater.

Figure 10 - Input Current Ratings

12.2 Checking Outputs

Turn all output circuit breakers to the OFF position and/or remove all fuses from the GMT fuse-holder. With no loads connected and without the battery connected, plug in or connect the AC input cords one at a time to the AC power source. Be sure to use the correct AC voltage for the rectifier inputs.

Using a volt meter measure the DC voltage reading across the –VO and +VO bus bars at the rear of the unit. The voltage should be approximately 54.4, 27.2, or 13.6VDC (depending on model), which is the factory setting.

One by one, turn each output circuit breaker to the ON position and/or insert a GMT fuse and measure the DC voltage across the corresponding output terminals. The voltage should again read approximately 54.4, 27.2, or 13.6 volts. After each output is measured, turn OFF that circuit breaker and/or remove the GMT fuse and turn ON and/or insert a fuse in the next one. After measuring the last circuit, turn off that breaker and/or remove the GMT fuse and make sure that all output breakers are in the OFF position and/or all fuses are removed.

Unplug or disconnect the AC input power source. Before touching any terminals wait 5 minutes for the internal storage capacitors to discharge.

12.3 Controller Section Operation and Settings

At this point, before the final installation connections, read section 13 covering Controller setup. Next, make any required signal connections, controller adjustments, temperature compensation adjustment and alarm enabling settings.

WARNING: Remember to take precautions each time the system is turned on and also when connecting or disconnecting the battery. Remember that the battery presents an energy hazard at its terminals. Also remember to allow 5 minutes for internal capacitors to discharge after disconnecting the AC input power and the battery.

12.4 Connection to Loads

With input AC power unplugged, the battery disconnected and no other power sources connected to the loads, make sure that all load circuit breakers are set to the OFF position and/or all GMT fuses are removed.

Connect load wires to each set of output terminals, one at a time. Note that the front panel breaker and fuse numbers directly correspond to the output terminal numbers.

Be sure to connect the polarities correctly.

12.5 Connection to Battery

WARNING: Improper polarity of the battery connection may damage the power system. Take precautions when installing the battery and note that the battery cables are “hot” (live) and present an energy hazard.

With AC input unplugged, remove the three rectifier modules from the system chassis. Make sure all load circuit breakers are in the OFF position and/or all GMT fuses removed. Set the battery circuit breaker to the OFF position. Carefully connect the battery cables to the battery terminals shown in Figure 4 while observing the correct polarity as described in section 9.4.

Note that until AC power is applied to the system the controller will not activate the LVD contactor.

12.6 System Turn-On

Perform the following operations:

1. Set the battery and all load circuit breakers to the OFF position.
For systems with GMT fuse distribution remove all fuses if already installed.
2. Plug in the rectifier modules.
3. Connect the AC power cables to the AC source.
4. Check that the green LED on the front panel has lit. After approximately 20 seconds for initialization the MAJA LED at least will light. The RFA LED may also light, dependent on the number of rectifiers installed at the time.
5. Set the battery circuit breaker to the ON position. Then set the load breakers to the ON position and/or insert the GMT fuses.
After approximately 5 seconds the status of various alarm LEDs will change, dependent on the number of rectifiers installed.

Using the WEB browser interface described in section 13 it is now possible to check overall system status for correct operation.

In particular, it is important to ensure that the load current reading does not exceed the maximum capacity of the installed rectifiers or, where N+1 operation is required, the maximum capacity of one less than the total number of rectifiers installed. Note also, that the system should have been sized so that a proportion of the available rectifier capacity is allocated for battery charging. Where N+1 redundant operation is used the additional 'spare' rectifier will normally provide this current.

IMPORTANT NOTES:

- a) It is not possible to start the system by connecting the batteries alone.
- b) During the 30 seconds initialization period the system bus voltage will be at the factory preset level of the rectifiers; nominally 54.4V, 27.2V or 13.6V depending on system voltage. After this period the internal controller will lower the output voltage by approximately 15% in order to limit current flowing to the batteries. During a following period of approximately 30 minutes the controller will ramp the system voltage up to the correct float voltage as determined by the temperature compensation algorithm.

This 'walk-in' function can be disabled via the controller WEB interface if it not required.

13.0 USING THE CONTROLLER WEB BROWSER INTERFACE

The X75 controller is provided with a built-in WEB server which can be accessed through the TCP/IP Ethernet port using a WEB browser. The WEB server employs Java Applets to continually scan system parameters and update the WEB page data. These same Applets return programming data to the DSC1000 when set-up changes need to be made.

The WEB server communicates with the browser using HTTP on IP Port 80 and the Java Applets on IP Port 8888. If any firewall or proxies are configured on the LAN that the DSC1000 is connected to it is important to ensure that these ports are open, otherwise the DSC1000 will not respond.

A genuine Java engine must be installed on the browser PC. The latest version can be downloaded and installed for free from www.java.com. Please note that installing only a browser plugin may not be sufficient for correct operation; so we recommend installing a full Java package.

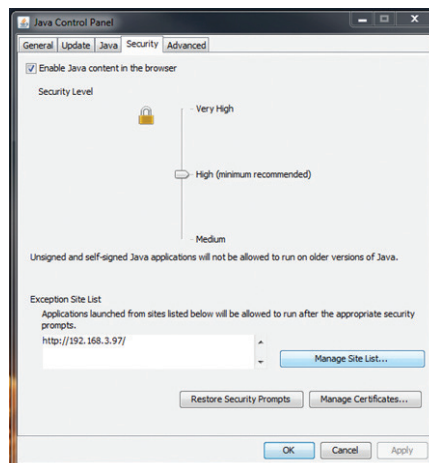
If the installed version of Java is 7u45 or earlier the following procedure “*Setting up Java*” is not required for correct operation and cannot be implemented.

PLEASE NOTE THAT THE APPLETS WILL NOT WORK WITH JAVA VERSION 7u51. DO NOT INSTALL THIS ON SYSTEMS USED TO MONITOR THE DSC1000.

WITH EFFECT FROM VERSION 7u60 THE FOLLOWING MUST BE IMPLEMENTED.

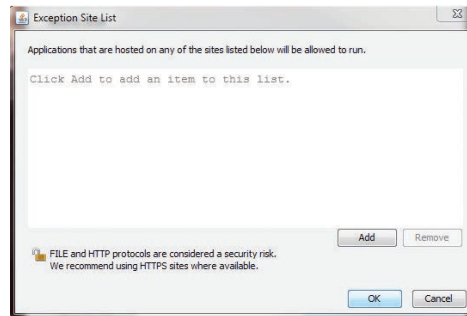
Setting up Java (7u60 or later only)

In order for the applets to be loaded correctly, you must add the IP address of the controller to the list of site exceptions in the java control panel. This can be found in the computer's control panel. Once the java control panel is open, select the Security tab as below.

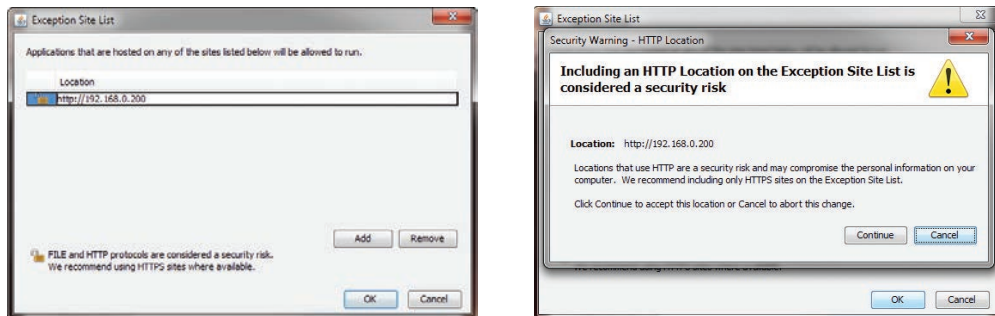


Ensure that ‘Enable Java content in the browser’ is checked and leave the “Security Level” set to “High (minimum recommended)”

Click on the Manage Site List button and the following will appear.



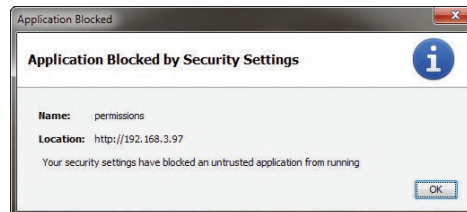
Click the Add button and type in the IP address of the controller in the format ‘http://xxx.xxx.xxx.xxx’ (substitute the IP address set in the controller). A warning will appear indicating that this is a security risk. Press Continue to allow the site to be added.



Now press OK and then OK again to close the Java control panel.

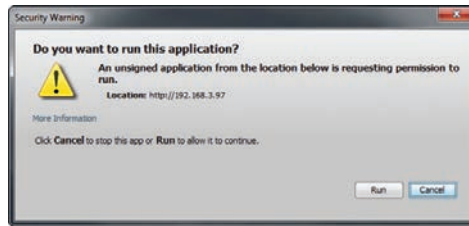
You should now be able to access the controller web pages and see the applets running.

Note that if you try to access a controller that has not been added to the exception list as above using a Browser with Java 7u60 or later installed you will get the following:



Note also that when accessing an allowed controller the following will appear at the start of each Browser session. Click OK to proceed. It will not appear again unless the Browser

is closed and re-opened.



The controller has various network programming capabilities which allow it to be connected to almost any configuration of IP network.

The default network settings that the controller is shipped with are:

IP Address	– 192.168.000.200
Subnet Mask	– 255.255.255.000
Gateway	– 000.000.000.000

All pages served by the controller's built-in WEB server consist of two frames; a 'navigation' frame on the left hand side and an 'information/programming' frame which occupies the majority of the browser window.

The buttons in the 'navigation' frame can be used at all times to jump between the various pages. Clicking on the UNIPOWER logo at the top will navigate directly to the UNIPOWER web site www.unipowerco.com.

Each of the blocks of information in the 'information/programming' frame is a Java applet. In some cases these applets simply collect information from the controller and presents it on-screen, in other cases the applets contain data entry fields for uploading programming information to the unit.

Note that a PC screen resolution of 1024 x 768 or higher is recommended to avoid excessive amounts of page scrolling.

The following sections describe the various WEB pages that can be viewed with the browser and give details of programming parameters that may be entered and sent to the unit.

IMPORTANT NOTE: The screen shots shown throughout this section are ‘typical’ examples. The exact data content will differ dependent on the system voltage and whether alterations from the default settings have been made. Settings can be returned to the factory defaults at any time by clicking on the ‘DEFAULT’ then ‘UPLOAD’ buttons on the relevant setup page. This action requires the level 1 pass code.

The factory default pass codes are:

Level 1 - 111

Level 2 - 123

13.1 Controller Status

When the X75 is first accessed using a WEB browser the Controller Status page shown below is downloaded.

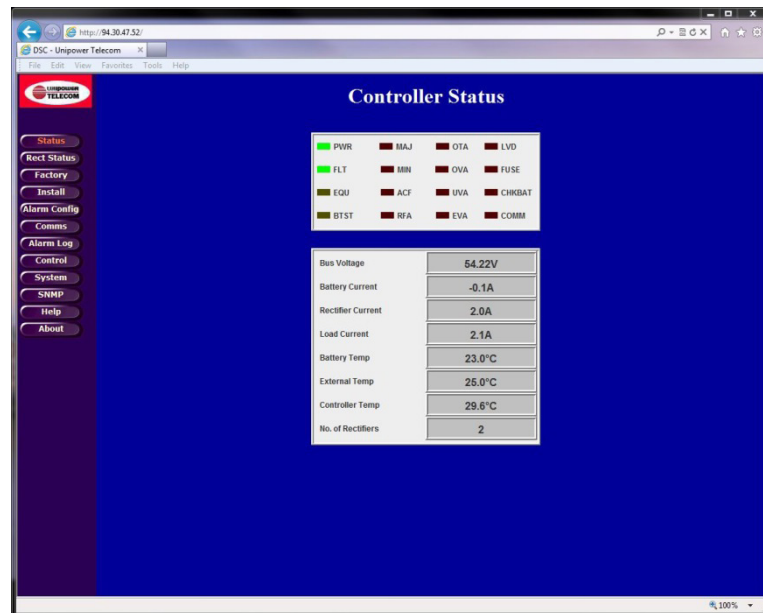


Figure 11 - Controller Status WEB Page (typical)

This page presents two blocks of information. The top block displays a number of system status parameters by mimicking a block of LEDs. 7 of these functions, described earlier, are displayed on the front panel of the system unit.

The bottom block of information shows the following 'live' data:

- Bus Voltage
- Battery Current
- Rectifier Current
- Load Current
- Battery Temperature
- External Temperature
- Controller Temperature
- No. of Rectifiers Installed (includes all rectifiers that are present regardless of status)

If the battery or external temperature probes are not connected a reading of 25°C will be displayed by default.

13.2 Rectifier Status

The **Rectifier Status** page presents detailed information about an individual rectifier module. Two types of data are included; 'live' status information and 'static' inventory information. In addition the controller returns the I²C address as confirmation that the unit has responded.

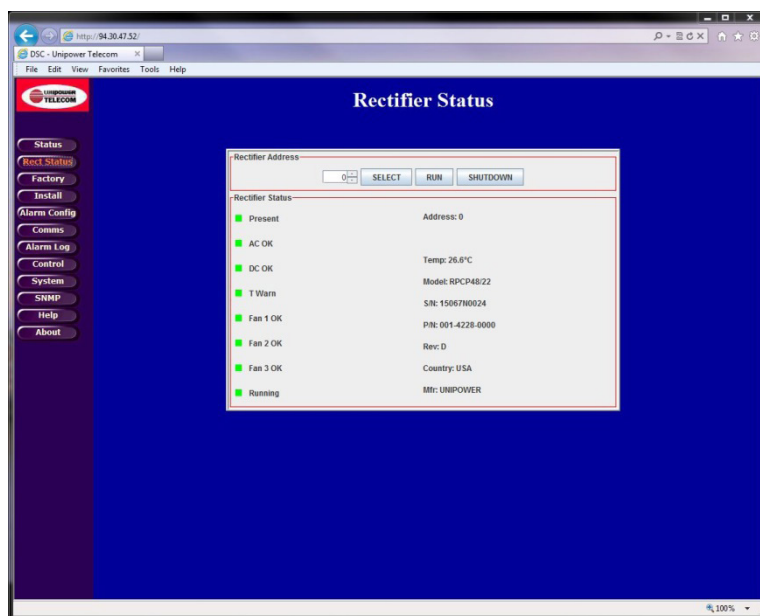


Figure 12 - Rectifier Status WEB Page (typical)

In order to obtain status information about a particular rectifier module it is necessary first to dial in the required rectifier address according to the table below and then click on the SELECT button to confirm the request.

RECTIFIER I ² C ADDRESSING		
Rectifier Position	Base System	Expander Shelf
	Address	Address
Left	0	4
Center	1	5
Right	2	6

Figure 13 - Rectifier I²C Addressing

A few seconds after the SELECT button has been pressed the X75 will respond and the status and inventory information will be updated. 'Live' data is presented in the form of 8 colored indicator blocks to the left. A green block indicates a 'good' condition and a red block indicates a 'bad' condition. In addition the unit's internal temperature is presented on the right.

Note that Sigma Series rectifiers include a single fan only and that two of the status indicator blocks will always be grayed out.

'Inventory' data, presented on the right below the temperature measurement includes, among other items, rectifier model number Serial Number and Revision Number.

13.2.1 Rectifier Inhibit (Shutdown)

The X75 includes a facility that enables the user to manually inhibit or shutdown individual rectifiers. This may be desirable when a particular rectifier is to be removed from the system for maintenance, although all UNIPower rectifiers are Hot-Swap, or for some other reason.

To inhibit a rectifier first dial in the I²C address of the required unit and the click on SHUTDOWN.

To restart a rectifier that has been inhibited dial in the I²C address of the required unit and the click on RUN.

Note that any rectifiers which have been inhibited will remain in this state until they are either restarted using the above method or the AC power is recycled.

13.3 Controller Factory Calibration

The primary purpose of the *Controller Factory Calibration* page is to allow UNIPower to setup a range of necessary calibration values to ensure correct operation.

When this page is requested and the Java applet has loaded a dialog requesting the Level 2 Pass code is presented. Once the pass code has been entered click **ENTER** and the page will then be updated with current values after a few seconds.

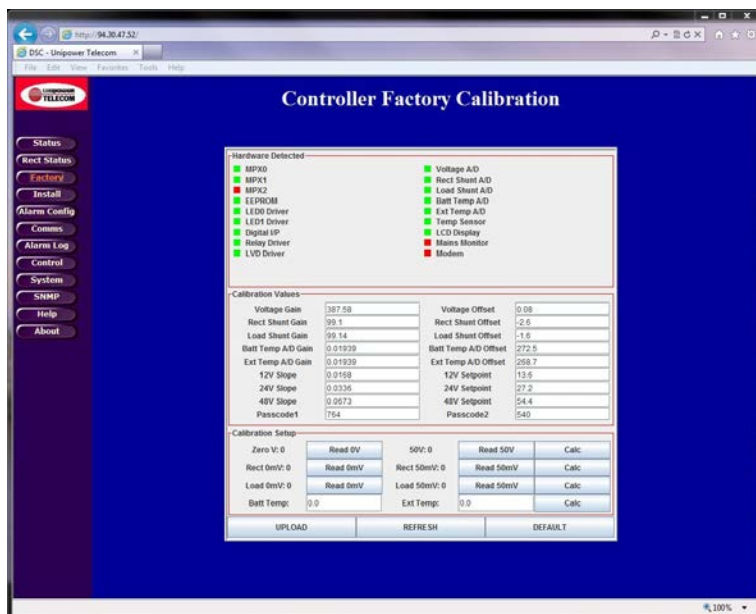


Figure 14 - Controller Factory Calibration WEB Page (typical)

NOTE: It should not normally be necessary for changes to be made to this page other than to change the pass codes if so desired.

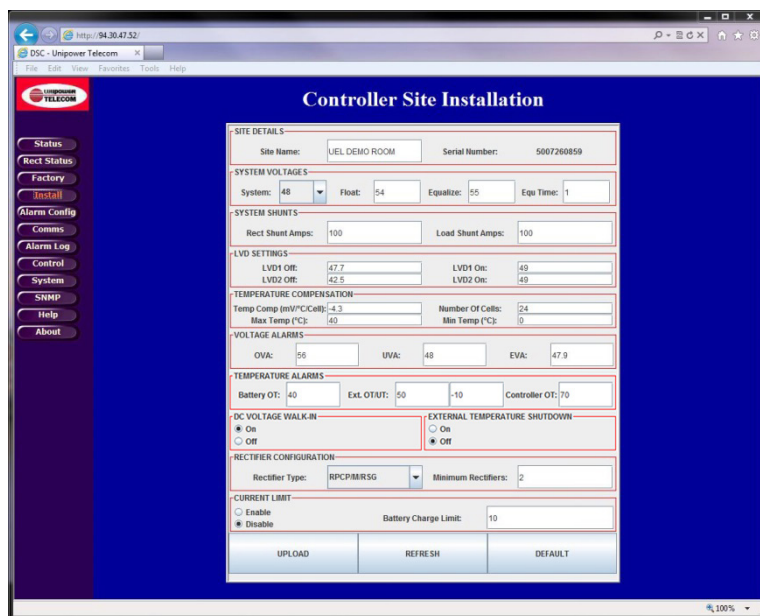
The factory default pass codes are:

Pass code Level 1 – 111

Pass code Level 2 – 123

13.4 Controller Site Installation

The *Controller Site Installation* page provides the system integrator or installer facilities for setting up the main system parameters.



The screenshot shows a web browser window displaying the 'Controller Site Installation' page. The page has a blue background and a sidebar on the left with navigation links: Status, Rect Status, Factory, Install, Alarm Config, Comm, Alarm Log, Control, System, SNMP, Help, and About. The main content area is divided into several sections with input fields and buttons:

- SITE DETAILS:** Site Name: UEL DEMO ROOM, Serial Number: 500720059
- SYSTEM VOLTAGE:** System: 48, Float: 54, Equalize: 55, Equ Time: 1
- SYSTEM SHUNTS:** Rect Shunt Amps: 100, Load Shunt Amps: 100
- LVD SETTINGS:** LVD1 On: 47.7, LVD2 On: 42.5, LVD1 Off: 49, LVD2 Off: 49
- TEMPERATURE COMPENSATION:** Temp Comp (mV/°C/cell): -4.3, Number Of Cells: 24, Max Temp (°C): 40, Min Temp (°C): 0
- VOLTAGE ALARMS:** OVA: 56, UVA: 48, EVA: 47.9
- TEMPERATURE ALARMS:** Battery OT: 40, Ext OT UT: 50, -10, Controller OT: 70
- DC VOLTAGE WALK-IN:** On (selected), Off
- EXTERNAL TEMPERATURE SHUTDOWN:** On (selected), Off
- RECTIFIER CONFIGURATION:** Rectifier Type: RCP/BRSG, Minimum Rectifiers: 2
- CURRENT LIMIT:** Enable (selected), Disable, Battery Charge Limit: 10

At the bottom of the form are three buttons: UPLOAD, REFRESH, and DEFAULT.

Figure 15 - Controller Site Installation WEB Page (typical)

To retrieve the currently programmed settings from the X75 click on REFRESH. After a few seconds the values will be displayed.

To reprogram to the factory default settings click on DEFAULT. After a few seconds the default values will be displayed.

To setup this page for a new configuration type in or select each new entry required and click on ENTER to confirm that entry. Once all required entries have been made click on UPLOAD. To confirm the new settings have been programmed into the X75 click on REFRESH. Check the entries after a few seconds to make sure they are still as required.

Each setting that can be made on this page is described below in detail:

SITE DETAILS

Site Name – Optional setting which may be used to identify the location of the unit.

Serial Number – Displays the unit serial number. (Cannot be changed.)

SYSTEM VOLTAGES

System – Dial in the Nominal system voltage; 12V, 24V or 48V.

Float – Enter the float voltage in accordance with the specifications of the batteries that are being employed with the system.

Equalize – Enter the equalization voltage in accordance with the specifications of the batteries that are being employed with the system.

Equ Time – Enter the desired time that the system should remain in equalize mode in accordance with the specifications of the batteries that are being employed with the system.

SYSTEM SHUNTS

Rect Shunt Amps – This is the 50mV Full-Scale rating for the internal shunt that is used to measure the total rectifier current. **THIS SETTING SHOULD NOT BE CHANGED.**

Load Shunt Amps – This is the 50mV Full-Scale rating for the shunt that is used to measure the total load current. **THIS SETTING SHOULD NOT BE CHANGED.**

LVD SETTINGS

LVD1 Off – Enter the voltage at which the LVD1 contactor will open during a battery discharge. The factory default setting is that recommended for most sealed lead acid batteries.

LVD1 On – Enter the voltage at which the LVD1 contactor will re-connect once the rectifiers are running. The factory default setting is that recommended for most sealed lead acid batteries.

LVD2 Off & LVD2 On – These settings are not required for the X75.

TEMPERATURE COMPENSATION

Temp Comp (mV/°C/Cell) – Enter the temperature compensation slope value in accordance with the specifications of the batteries that are being employed with the system.

Number Of Cells – Enter the total number of battery cells.

Max Temp (°C) – Enter the maximum temperature at which temperature compensation may be applied. Above this temperature the X75 will cease to apply further compensation to the float voltage.

Min Temp (°C) – Enter the minimum temperature at which temperature compensation may be applied. Below this temperature the X75 will cease to apply further compensation to the float voltage.

VOLTAGE ALARMS

OVA – Enter the voltage above which the Over-Voltage Alarm will be triggered.

UVA – Enter the voltage below which the Under-Voltage Alarm will be triggered.

EVA – Enter the voltage below which the End-Voltage Alarm will be triggered.

TEMPERATURE ALARMS

Battery OT – Enter the temperature at which the battery Over-Temperature alarm will be triggered.

External OT/UT – Enter the temperature at which the external Over-Temperature and Under-Temperature alarms will be triggered.

Controller OT – Enter the temperature at which the controller's internal Over-Temperature alarm will be triggered. **THIS SETTING SHOULD NOT NORMALLY BE CHANGED.**

DC WALK-IN

ON (Default) – Causes the controller to slowly ramp up the DC rectifier voltage when AC is applied. The voltage will rise from approximately 45V (for 48V systems), 22V (for 24V systems) and 11V (for 12V systems) up to the float voltage. The ramp-up time is several minutes and cannot be adjusted. The purpose of this feature is to avoid initially large battery charging currents.

OFF – Causes the controller to program all rectifiers to the float voltage almost immediately after AC is applied. Battery charging current will only be limited by the current limit of the rectifiers.”

EXTERNAL TEMPERATURE SHUTDOWN

This facility is for use ONLY with the special Load LVD configuration described in appendix 2.

THIS FACILITY MUST NOT BE ENABLED IN ANY STANDARD SYSTEM AS IT MAY PRODUCE UNPREDICTABLE RESULTS.

RECTIFIER CONFIGURATION

Rectifier Type – This selects the type of rectifier installed in the system from the drop-down list. In the X75 this is factory preset to RPCM/P and SHOULD NOT BE CHANGED.

Minimum Rectifiers – Enter the minimum number of rectifiers that is required to provide sufficient current to the load and to simultaneously re-charge the batteries from a fully discharged state in the desired time according to the specification of the batteries being employed with the system.

CURRENT LIMIT

Select the appropriate button for ENABLE or DISABLE as required.

Battery Charge Limit – When enabled enter the maximum desired battery charge current.

Using this setting the X75 will intelligently control the rectifier float voltage such that the battery charge current never exceeds the set value.

13.5 Alarm Configuration

The *Alarm Configuration* page presents a matrix of tick boxes which are used to programme how certain system conditions affect the actions of the alarm relays and front panel LEDs. It is also used to define the ‘good’ condition (polarity) of the auxiliary digital input. The screen shot below shows the factory default settings.

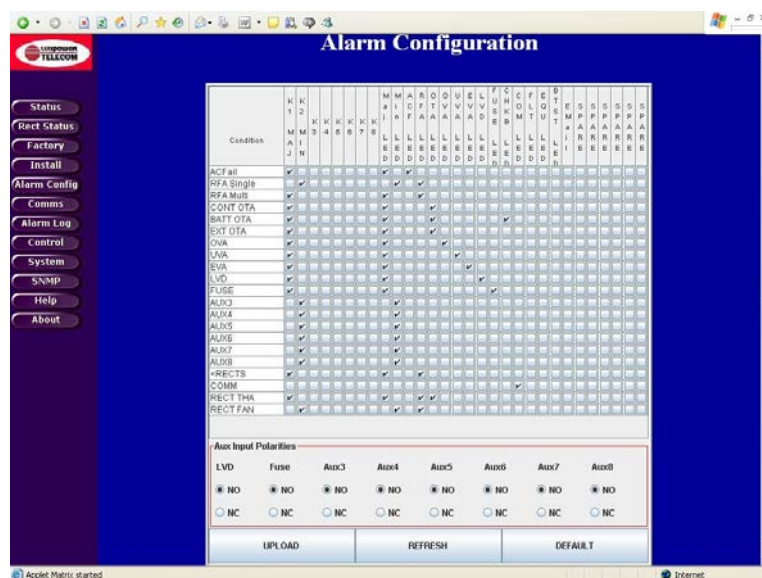


Figure 16 - Alarm Configuration WEB Page (typical)

13.5.1 Alarm Matrix Programming

K1 MAJ – An item ticked in this column will enable the MAJOR alarm relay when active. Any item that is considered to represent a condition which should be acted upon immediately should be ticked.

K2 MIN – An item checked in this column will enable the MINOR alarm relay when active. Any item that is considered to represent a condition that can wait for action at a later time should be ticked.

K3 & K4 – A ticked item in any of these columns will activate the relevant auxiliary alarm relay.

Note that K5 – K8 are not installed in the X75 system.

MAJ LED – An item ticked in this column will enable the MAJOR alarm LED when active.

MIN LED – An item ticked in this column will enable the MINOR alarm LED when active.

ACF LED – An item ticked in the column will activate the ACF LED when the condition occurs.

RFA LED – An item ticked in the column will activate the RFA LED when the condition occurs.

OTA LED – An item ticked in the column will activate the OTA LED when the condition occurs.

OVA LED – An item ticked in the column will activate the OVA LED when the condition occurs.

Note: The following LEDs are not fitted on the X75 but the function will show a valid condition on the controller status WEB page.

UVA LED – An item ticked in the column will activate the UVA LED when the condition occurs.

EVA LED – An item ticked in the column will activate the EVA LED when the condition occurs.

LVD LED – An item ticked in the column will activate the LVD LED when the condition occurs.

FUSE LED – An item ticked in the column will activate the FUSE LED when the condition occurs.

CHKB LED – An item ticked in the column will activate the CHKB LED when the condition occurs.

COM LED – An item ticked in the column will activate the COM LED when the condition occurs.

FLT LED – An item ticked in the column will activate the FLT LED when the condition occurs.

EQU LED – An item ticked in the column will activate the EQU LED when the condition occurs.

BTST LED – An item ticked in the column will activate the BTST LED when the condition occurs.

EMAIL – When the email reporting feature is activated ticking an item in this column results in an email message being sent immediately.

13.5.2 Aux. Input Polarities

By selecting the NO or NC radio buttons for the AUX 3 input the ‘good’ condition can be set to either Normally Open or Normally Closed respectively.

NOTE THAT THE LVD AND FUSE SETTINGS ARE PRESET AND SHOULD NOT BE CHANGED.

AUX 4 to AUX 8 are not fitted on the X75 system.

Once the required alarm and input polarity settings have been selected it is necessary to click on the UPLOAD button to store the new settings in the unit’s memory. To confirm that the new settings have been received and programmed click on the REFRESH button and wait a few seconds for the unit to respond. If no changes are apparent then the unit has been successfully reprogrammed.

To return the unit to the factory default settings click on the DEFAULT button

13.6 Comms

Clicking on the *Comms* button loads to Controller Network Settings page. This page is used to setup the Ethernet and E-Mail communications settings.

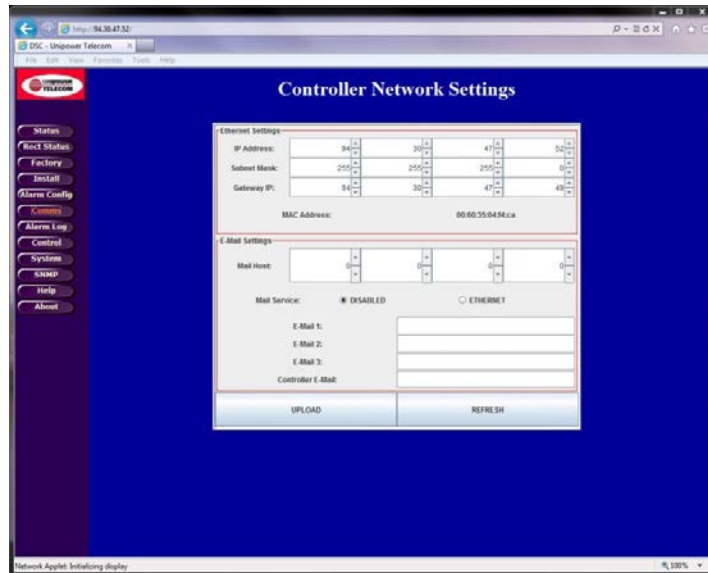


Figure 17 - Controller Network Settings (typical)

13.6.1 Ethernet Settings

13.6.1.1 IP Address

This setting defines the IP Address for the controller.

The default factory setting of 192.168.0.200 is a designated 'private' IP Address commonly used in IP based local area networks behind proxies, NAT routers or network bridges.

To enter a new IP address use the up/down arrows to dial in the required numbers or type them directly into the boxes as required. It is important to press the ENTER key on completion.

13.6.1.2 Subnet Mask

This setting defines the Subnet Mask associated with the above IP Address.

The default factory setting is 255.255.255.0.

To alter the Subnet mask use the up/down arrows to dial in the required numbers or type them directly into the boxes as required. It is important to press the ENTER key on completion.

13.6.1.3 Default Gateway

This setting defines the Network Gateway to which the controller will route all IP traffic that is destined for any location outside the LAN to which it is connected. This setting would normally be the address for the Proxy, NAT Router or Bridge that routes network traffic to the Internet or other WAN segments.

The default factory setting is 0.0.0.0, i.e. all traffic is retained within the LAN environment.

To alter the Default Gateway use the up/down arrows to dial in the required numbers or type them directly into the boxes as required. It is important to press the ENTER key on completion.

13.6.2 E-Mail Settings

13.6.2.1 Mail Host

This setting is the IP Address of the E-Mail Server that will route SMTP messages sent by the controller.

To set this address use the up/down arrows to dial in the required numbers or type them directly into the boxes as required. It is important to press the ENTER key on completion.

13.6.2.2 Mail Service

Select the ETHERNET radio button to switch on the E-Mail alarm facility, select the DISABLE radio button to switch it off.

13.6.2.3 E-Mail 1, 2 & 3

The X75 is able to send alarm messages to up to three unique email addresses.

Type in the desired address in the E-Mail 1 box using the normal name@domain format and press the ENTER key to confirm.

Repeat as required for E-Mail 2 and E-Mail 3.

13.6.2.4 Controller E-Mail

The X75 requires an email address of its own to send email alarm messages. Note, however, that it is unable to receive messages sent to this address.

Type in the desired address in the Controller E-Mail box using the normal name@domain format and press the ENTER key to confirm.

Once all desired Ethernet and E-Mail settings have been entered click on the UPLOAD button to programme them into the controller. To confirm successful programming on these setting click on the REFRESH button, wait a few seconds for the unit to respond and then ensure that the desired settings are returned by the unit.

CAUTION: Once a new IP Address has been uploaded it will be necessary to redirect the browser to this new address in order to access the WEB pages.

13.7 Alarm Log

The **Alarm Log** page can be used to view a history of alarm and other conditions that have occurred.

When this page is first loaded the alarm log window will be empty.

To load the current log file click on REFRESH. After a few seconds the log data will be loaded.

To clear the log click on the CLEAR button, the refresh the page click on the REFRESH button.

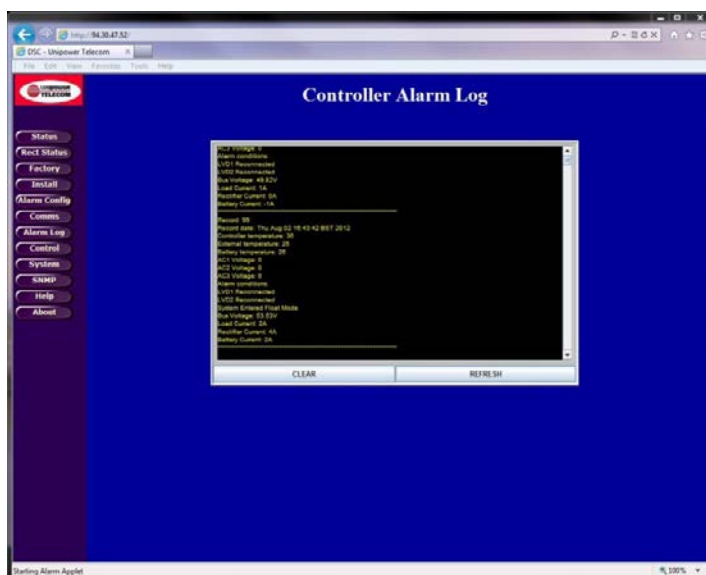


Figure 18 - Controller Alarm Log WEB Page (typical)

13.8 Control

The **Controller Control Panel** page is used to remotely switch the system between FLOAT and EQUALIZE modes. This page displays various system status functions enabling the operator to monitor these system parameters from a remote location.

To set the system to equalize mode click on the EQUALIZE button. After a few seconds the unit will respond by switching off the FLT LED indicator and switching on the EQU LED indicator.

To return the system to float mode, click on the FLOAT button. The unit will respond by returning the FLT and EQU LED indicators to their normal state.

Note that if the unit is not returned to float mode manually it will be returned automatically after the pre-programmed time has elapsed.

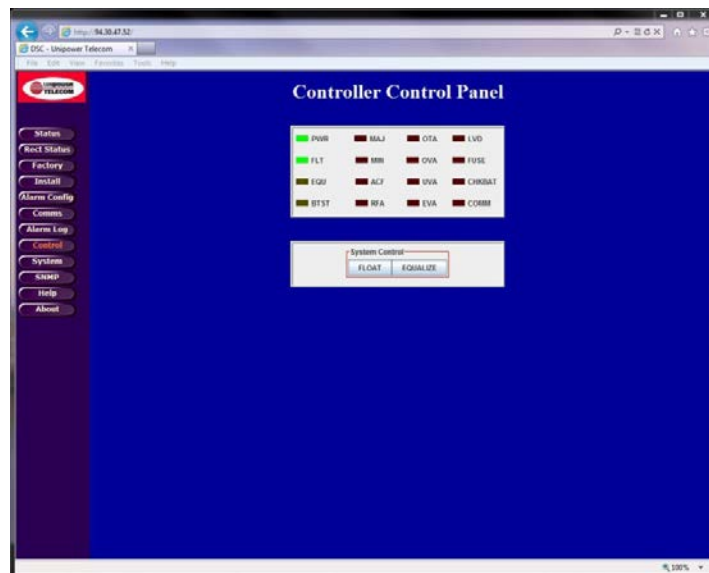


Figure 19 - Controller Control Panel WEB Page (typical)

13.9 System

The *Controller System Settings* page enables a user to alter the controller's real-time clock date and time settings. New date and time settings can be entered manually or automatically synchronized with a 'host' system.

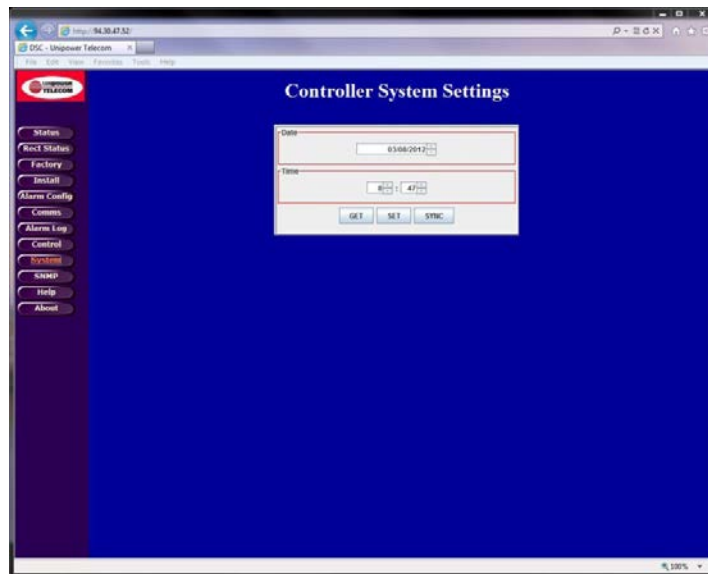


Figure 20 - Controller System Settings WEB Page (typical)

13.9.1 Manual Setting

To enter a new date and/or time manually either use the up/down buttons to dial in the desired settings or type them directly into the required boxes. Press the ENTER key in each case to confirm.

Once the desired settings have been enter click on the SET button to upload them.

13.9.2 Automatic Setting

To synchronize the date and time with the computer being used to access the controller click on the SYNC button to load the new settings from the computer and then click on the SET button to upload them.

To update this page with the controller's current date and time click on the GET button.

13.10 SNMP

The *SNMP Configuration* page is used to setup the controller's SNMP System Information, Alarm Trap and Agent Information parameters. It also allows the SNMP feature to be activated.

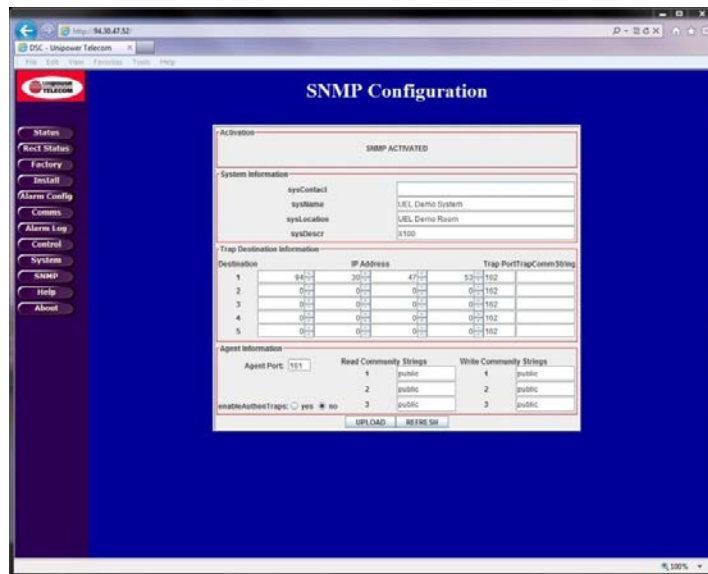


Figure 21 - SNMP Configuration WEB Page (typical)

Note: It is assumed that customers wishing to employ the SNMP features of the X75 will be familiar with the necessary set-up procedure for this page.

As with all other WEB pages described in this manual it is necessary to click on UPLOAD to programme the desired settings and to click on REFRESH to review them.

Clicking on ACTIVATE will have no effect if the SNMP feature has not been installed in the unit.

The X75 MIB, detailed in Appendix 3 of this manual is available from the software download section on the following page of the UNIPower web site:

www.unipowerco.com/operating-manuals

13.11 Help

The *Controller Help* Page provides a few quick reminder notes. For more detailed help the user is referred to this manual.

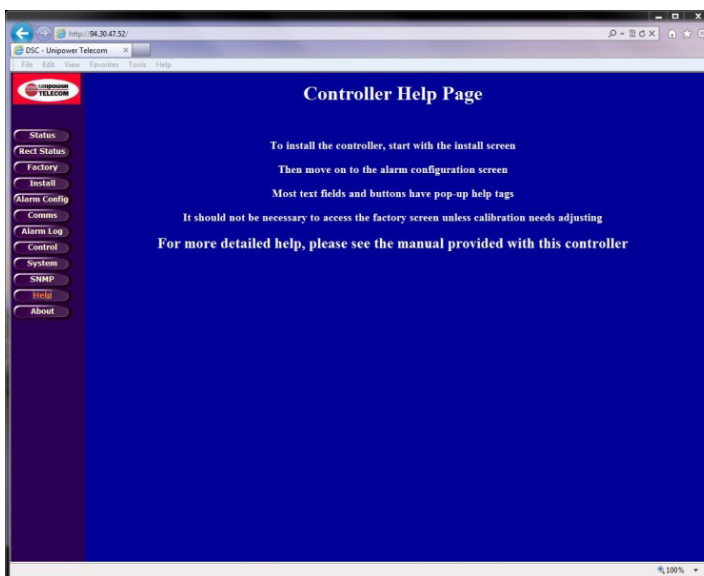


Figure 22 - Controller Help WEB Page (typical)

13.12 About

The About UNIPOWER Telecom page provides contact information in case additional technical or other support is required.



Figure 23 - About UNIPOWER Telecom WEB Page (typical)

Appendix 1 – SNMP MIB Information

The SNMP feature provides status read-out and alarm trapping only. All parameters described in this appendix are therefore read-only.

Refer to the appropriate sections earlier in the main body of this manual for system set-up.

Parameters for UNIPOWER X75 Remote Access Controller MIB

1. Voltages

Bus Voltage - Description: Live data giving actual voltage of system bus.

2. Currents

Battery Current - Live data giving actual current drawn from or into battery string(s).

Rectifier Current - Live data giving actual current drawn from rectifier power supply system.

Load Current - Live data giving actual current delivered to the load.

3. Temperatures

Battery Temperature - Live data giving actual temperature of battery string.

External Temperature - Live data giving actual temperature of external sensor.

Controller Temperature - Live data giving actual temperature within the controller enclosure.

4. Rectifier Info

Number of Rectifiers - Live data giving number of rectifiers detected by the controller.

5. Auxiliary Inputs

These are all part of one status flag held within the controller.

Digital Input 1 (Low Voltage Disconnect State)

Digital Input 2 (Fuse/Breaker State)

Digital Input 3

Digital Input 4

Digital Input 5

Digital Input 6

Digital Input 7

Digital Input 8

6. Alarms

These are all part of one alarm status flag held within the controller.

ACFAIL - Indicates an AC Failure detected by the power supply rectifiers or an external sensor.

MAJOR - Indicates that a major alarm condition requiring immediate attention has been detected by the controller.

MINOR - Indicates that a minor alarm condition requiring attention at the next scheduled maintenance has been detected by the controller.

SINGLE RECTIFIER FAILURE (SRFA) - The controller has detected that a single rectifier has failed

MULTI RECTIFIER FAILURE (MRFA) - The controller has detected that multiple rectifiers have failed.

OVER TEMPERATURE ALARM (OTA) - The controller has detected an over temperature condition on battery/external/controller temperature sensor.

OVER VOLTAGE ALARM (OVA) - The controller has detected an over voltage condition on the bus.

UNDER VOLTAGE ALARM (UVA) - The controller has detected an under voltage condition on the bus.

END VOLTAGE ALARM (EVA) - The controller has detected an End Voltage condition, i.e. the batteries are near end of discharge.

LOW VOLTAGE DISCONNECT ALARM (LVD) - The controller has detected that one of the LVDs is open.

FUSE ALARM - The controller has detected that a fuse or breaker is open.

CHECK BATTERY (CHKBAT) - The controller has detected a fault with the battery string(s) either temperature or current related.

COMMUNICATION FAULT (COMM) - The controller has detected a problem with the internal I²C bus.

7. Settings

OVER VOLTAGE ALARM SETTING - Setting for over voltage alarm.

UNDER VOLTAGE ALARM SETTING - Setting for under voltage alarm.

END VOLTAGE ALARM SETTING - Setting for end voltage alarm.

LVD1OFF SETTING - Setting for voltage at the point where LVD1 will be shut off.

LVD1ON SETTING - Setting for voltage at the point where LVD1 will be turned on.

LVD2OFF SETTING - Setting for voltage at the point where LVD2 will be shut off.

LVD2ON SETTING - Setting for voltage at the point where LVD2 will be turned on.

FLOAT VOLTAGE - Voltage setting for the bus in float mode (modified by temp. compensation).

EQUALIZE VOLTAGE - Voltage setting for the bus in equalization mode.

NOMINAL SYSTEM VOLTAGE - The nominal system voltage (12, 24 or 48).

CONTROLLER OVER TEMPERATURE ALARM - The controller temperature, in degrees Celsius, above which an over temperature alarm will activate.

BATTERY OVER TEMPERATURE ALARM - The battery temperature, in degrees Celsius, above which an over temperature alarm will activate.

EXTERNAL OVER TEMPERATURE ALARM - The external temperature, in degrees Celsius, above which an over temperature alarm will activate.

TEMPERATURE COMPENSATION SLOPE - The parameter applied, in millivolts/°C/cell, to the float voltage to achieve temperature compensation.

TEMPERATURE COMPENSATION MAX TEMPERATURE - The temperature above which no further temperature compensation will be applied.

TEMPERATURE COMPENSATION MIN TEMPERATURE - The temperature below which no further temperature compensation will be applied.

8. Identification

SITE NAME - Holds the name of the site/system.

SERIAL NUMBER - Holds the serial number of the site/system.

9. SNMP Traps

The X75 will issue a trap if any of the alarm conditions mentioned above are activated.

A trap will also be issued when an alarm condition is cleared.

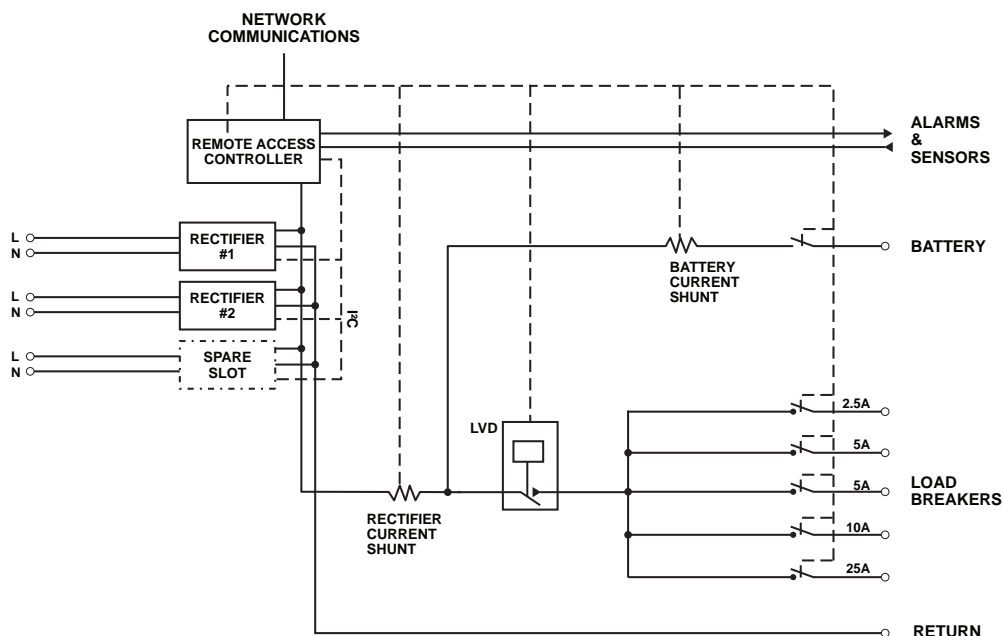
To obtain a copy of the latest X75 MIB download it from:

<http://www.unipowerco.com/operating-manuals>

or contact one of our sales offices.

Appendix 2 – Load LVD (special order)

This appendix replaces section 7 on page 10 of this manual



- A** 85-264VAC is supplied directly to each of the rectifiers which produce a nominal +12VDC output.
- B** Following a current shunt to measure the rectifier current, the rectifier DC output is fed to the battery terminals via a current battery current shunt and a 100A circuit breaker.
- C** The rectifier DC output is also fed to the loads via the LVD (Low Voltage Disconnect, and 5 circuit breakers.
- D** The management unit monitors and controls the rectifiers via an I²C interface and also checks the status of the DC load and battery breakers.
- E** The management unit monitors external sensors and provides alarms.
- F** This unit incorporates an external temperature shutdown feature which is enabled on the controller site installation web page (see section 13.4).

If the temperature at the external temperature sense point goes below -10°C or above +65°C a shutdown sequence is initiated. Once the external temperature returns to within these limits the system initiates an automatic restart sequence.

Appendix 3 – Revision History

Rev. #	Date	Detail	Page
1	11/06	First Release	
2	12/06	Correction to Input Supply Current specification. Section 6.4 – Wording altered for clarification. Section 11.4 – Wording altered for clarification, table corrected. Section 12.4 – Wording altered for clarification. Figure 8 – Screen grab changed to reflect standard X75 setup.	8 9 18 21 36
3	05/07	Figure 3a – J2 & J4 designation corrected. Figure 16 – Screen grab changed to correct rectifier thermal & fan alarm setups. URL to MIB files changed.	11 36 50
4	07/07	Figure 3a – Bus Bar designations corrected. Section 9.4 – Wording altered to clarify connection arrangements. Section 12.6 – Wording altered to clarify start-up sequence. Section 13 – Note added relating to content of screen images and ‘typical’ added to titles for all screenshot Figures.	11 13 22 27-46
5	08/12	Update screenshots. Add DC Walk-in. Update WEB address.	27-46 35 50
5a	05/13	SNMP now standard.	various
5b	07/13	Default passcodes added.	31
6	07/13	Added rectifier input current table.	20
7	10/13	Full revision including new section on principal of operation.	all
7a	11/13	Correct wire sizes sections 11.1.2, 11.2, 11.4 .	16-18
8	01/14	Add safety warnings for UL in section 3. Amend section 7.2 to clarify shunt function. Update Figure 15 screenshot for f/w rev 4.03. Update section 13.4 to include description of temperature shutdown feature. Add new appendix 2 for special reference 578. Renummer this appendix.	6 10 32, 34,35 51 52
9	01/14	Add notes about Java security issues	23-25
10	05/14	Correct operating temperture specifications	9
10a	05/14	Change title for appendix 2	51
10b	05/14	Amend clause 3.3.1	6

This document is believed to be correct at time of publication and UNIPower LLC accepts no responsibility for consequences from printing errors or inaccuracies. Specifications are subject to change without notice.

1RU HIGH 48V, 24V and 12V INTEGRATED DC POWER SYSTEMS



GRAVITAS X75 BASE SYSTEM

KEY FEATURES

- ◆ 1RU High Base System
- ◆ 1RU High Expander Shelf
- ◆ Remote Monitoring & Control
- ◆ Fully Integrated System
- ◆ Hot-Swap Rectifier Modules
- ◆ Up to 72A at -54.4VDC
- ◆ Up to 75A at +27.2VDC
- ◆ Up to 75A at +13.6VDC
- ◆ Wide Range AC Input
- ◆ Up to 10 DC Load Circuits
- ◆ Quick and Easy Installation

SAFETY CERTIFICATIONS

UL60950-1 2nd Ed.
CSA22.2 No. 60950-1 2nd Ed.
EN60950-1 2nd Ed.

TWO-YEAR WARRANTY



DESCRIPTION

Gravitas X75 is an ultra-compact, integrated DC power system. The base system is a 1RU shelf holding up to three hot-swap rectifier modules. This system produces up to 1958 watts output at -54.4, +27.2 or +13.6VDC. It can also be operated as a 2+1 redundant system with up to 1305 watts output. The expanded system consists of a base shelf plus an expander shelf with a 2RU total height. This system holds up to six rectifier modules with up to 3916 watts output; it can be operated as a 5+1 redundant system with up to 3264 watts output. Each rectifier module is cooled by a fan that operates at a speed which is a function of load and temperature.

There are up to five circuit-breaker protected DC outputs or up to 10 GMT fuse protected outputs on the base system. A battery string breaker and a low-voltage battery disconnect are standard features. The expander shelf comes with a ribbon cable and connectors to link the signals between the two units at their rear panels. It also comes with bus bar links to parallel the rectifier output bus bars.

The system can also be operated as a battery backup, single feed power system (without load circuit breakers or fuses).

The remote access controller monitors the system parameters and has alarms for system failures. There are six red LED alarms which indicate a failure: Major Alarm, Minor Alarm, Rectifier Alarm, AC Input Alarm, Over temperature Alarm and Overvoltage Alarm. A green LED indicates that the controller is operating. Four Form C relay outputs give alarms: Major Alarm, Minor Alarm, Rectifier Alarm and AC Input Alarm. The controller is programmed by means of a remote PC web page display. Communication is by Ethernet LAN with SNMP (Simple Network Management Protocol) and alarm trapping. It also has provision for temperature compensated charging of an external battery using a supplied TC probe.

www.unipowerco.com

NORTH AMERICA CALL: +1-954-346-2442 • EUROPE CALL: +44 (0)1903 768200

GRAVITAS X75 SUMMARY FEATURES

- ◆ -48, +24, or +12VDC Rectifiers
- ◆ Hot-Swap Rectifiers Modules
- ◆ Power Factor Corrected
- ◆ Class B EMI Input Filter
- ◆ Base and Expander Shelves
- ◆ N+1 Redundant Operation
- ◆ Up to 10 DC Load Circuits
- ◆ Circuit Breakers or GMT Fuses
- ◆ Battery String Breaker
- ◆ LV Battery Disconnect
- ◆ Remote Monitoring & Control
- ◆ Quick, Easy Installation
- ◆ 19 or 23-Inch Rack Mounting
- ◆ SNMP with Alarm Traps

GRAVITAS X75 CAPABILITY GUIDE

SYSTEM CAPABILITY

SYSTEM CAPABILITY	X75-48		X75-24		X75-12	
	BASE SYSTEM	EXPANDED SYSTEM	BASE SYSTEM	EXPANDED SYSTEM	BASE SYSTEM	EXPANDED SYSTEM
System Voltage	-54.4VDC	-54.4VDC	+27.2VDC	+27.2VDC	+13.6VDC	NOT AVAILABLE
System Max. Current	36.0A	72.0A	55.2A	75.0A	75.0A	
System Current, N+1 Redundant	24.0A	60.0A	36.8A	73.5A	66.0A	
No. of Rectifiers, Max.	3	6	3	5	3	
Battery String Breaker	Standard					
Low Voltage Disconnect						
Total No. DC Loads, Max.	10					
Option A - miniature breakers						
Option B - GMT fuses						
Controller Features	4					
Alarm Outputs						
External Digital Inputs						
Temp. Compensation	Standard					
Communications	Standard					
Ethernet TCP/IP						
SNMP						
Shelf Height	1RU, Base Shelf and Expansion Shelf					
Mounting Width, Inches	19 or 23 (universal reversible mounting brackets)					

Notes:

- The expander shelf allows up to 3 additional rectifier modules to be connected to the rectifier bus for additional power capability. The rectifiers are paralleled to the system bus via bus bars and expansion interface connections.
- For applications not requiring battery support consult UNIPOWER sales office about using Front-End power modules instead of rectifier modules.

RECTIFIER MODULES vs. SYSTEM CAPACITIES

MODULE MODEL NO.	OUTPUT VDC	OUTPUT AMPS	NO. SYST. MODULES		MAX. SYST. AMPS		NO. N+1 MODULES		N+1 SYST. AMPS	
			BASE	EXP.	BASE	EXP.	BASE	EXP.	BASE	EXP.
RSJ48/12-Z	-54.4VDC	12.0	3	6	36.0	72.0	2+1	5+1	24.0	60.0
RSG48/10-Z	-54.4VDC	10.1	3	6	30.3	60.6	2+1	5+1	20.2	50.5
RSF48/7-Z	-54.4VDC	7.4	3	6	22.2	44.4	2+1	5+1	14.8	37.0
RSG24/18-Z	+27.2VDC	18.4	3	5	55.2	75.0	2+1	4+1	36.8	73.6
RSF24/13-Z	+27.2VDC	12.9	3	5	38.7	75.0	2+1	4+1	25.8	51.6
RSG12/33-Z	+13.6VDC	33.0	3		75.0		2+1		66.0	
RSF12/22-Z	+13.6VDC	22.1	3		66.3		2+1		44.2	

RECTIFIER MODULE SPECIFICATIONS

INPUT

Voltage Range	See Model Table
Power Factor	>0.99
Total Harmonic Distortion, Max.	5%
Frequency	47-63Hz
Inrush Current Limiting, Max.	30A Peak
EMI Filter, Conducted	FCC20780 pt. 15J Curve B EN55022 Curve B
Fast Transients	EN61000-4-4
Surges	EN61000-4-5
Remote Adjust	0 to +5V
Input Protection ¹	Internal Fuse, 10A

OUTPUT

Current & Voltage	See Model Table
Output Power	300-653W
Voltage Adjustment Range	±5%
Standby Output	+5V @250mA
Line & Load Regulation, Max.	2%
Holdup Time	10msec.
Overvoltage Protection	Latch Off
Filtering: Wideband Noise, 20MHz BW ²	
48V/54.4V	500mV pk-pk
24V/27.2V	250mV pk-pk
12V/13.6V	125mV pk-pk
Current Limit	105-110% Rated Current
Efficiency ³	85-90%

SAFETY CERTIFICATIONS UL60950-1 2nd Ed., CSA22.2 No. 60950-1 2nd Ed.,
EN60950-1 2nd Ed.

STATUS INDICATORS

AC GOOD	Green LED
DC GOOD	Green LED

ALARM SIGNALS (Logic LO, TTL compatible)

ACOK	AC present, 5V standby operating
DCOK	DC output within -10% of nominal

SERIAL COMMUNICATIONS

I ² C	Append add -Z to model number
------------------------	-------------------------------

ENVIRONMENTAL

Operating Temp. Range	-20°C to +70°C
	-40°C start-up, reduced performance
Output Current Derating	2.5%/°C, 50°C to 70°C
Storage Temp. Range	-40°C to +85°C
Environment	Pollution Degree 2
Humidity	0% to 95%, Non-Condensing
ESD	Bellcore GR-1089-Core and EN61000-4-2
MTBF, 35°C (Bellcore)	200,000 Hours
Cooling	Integral Ball Bearing Fan
Acoustic Noise @ 1m (module)	52-61dB

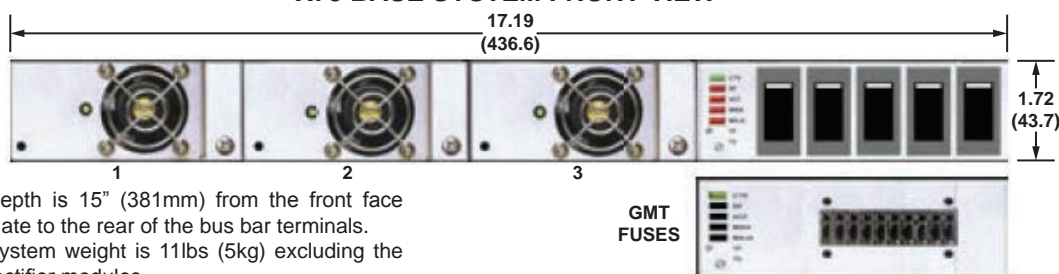
PHYSICAL SPECIFICATIONS

Case Material	Aluminum
Case Dimensions, Inches (mm)	1.6 H x 3.3 W x 11.0 D (40.6 x 83.8 x 279.4)
Weight	2.1 lbs. (0.95 kg.)

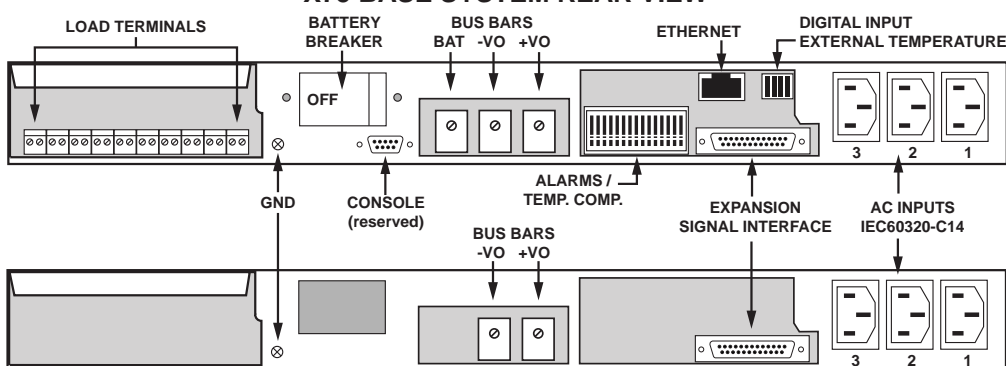
Notes:

1. External protection required when operating from HVDC.
2. 20MHz bandwidth. Measure with 0.1µF ceramic and 10µF tantalum capacitors in parallel across the output.
3. The efficiency is at low end of range for 12V output and at high end of range for 48V output.

X75 BASE SYSTEM FRONT VIEW



X75 BASE SYSTEM REAR VIEW



See X75 manual for full description of I/O signals and connector pinouts.



75-ES EXPANDER REAR VIEW

MOUNTING

The X75 is designed for mounting in a 1U high space in either a 19" or a 23" rack-mount environment and is supplied as standard with dual purpose rack-mounting brackets.

SHIPPING WEIGHTS & DIMENSIONS

	Width	Height	Depth	Weight
System Unit	22	3	22	14lbs
Expansion Chassis	(560)	(76)	(560)	(6.4kg)
Rectifier Module	8	4	15	4lbs
	(203)	(102)	(381)	(1.8kg)

Dimensions in inches (mm)

CONFIGURATION GUIDE

1. Determine the capacity of the system desired, taking into account future expansion, then check the type of rectifier required and fill in the initial quantity to be ordered including spares. This will determine the system unit base number.

BASE SYSTEM OUTPUT, MAX.	BASE SYSTEM OUTPUT, N+1	RECTIFIER MODULES CHECK TYPE REQ.	NO. MODULES REQUIRED	SYSTEM UNIT BASE NUMBER
-54.4VDC@36.0A -54.4VDC@30.3A -54.4VDC@22.2A	-54.4VDC@24.0A -54.4VDC@20.2A -54.4VDC@14.8A	<input type="checkbox"/> RSJ48/12-Z <input type="checkbox"/> RSG48/10-Z <input type="checkbox"/> RSF48/7-Z	_____	X75-48
+27.2VDC@55.2A +27.2VDC@38.7A	+27.2VDC@36.8A +27.2VDC@25.8A	<input type="checkbox"/> RSG24/18-Z <input type="checkbox"/> RSF24/13-Z	_____	X75-24
+13.6VDC@75.0A +13.6VDC@66.3A	+13.6VDC@66.0A +13.6VDC@44.2A	<input type="checkbox"/> RSG12/33-Z <input type="checkbox"/> RSF12/22-Z	_____	X75-12

2. If the required capacity initially or in the future exceeds the capability of the base system check against the same rectifier type as above and fill in the number of additional rectifiers required. This defines that an expansion unit needs to be ordered.

TOTAL SYSTEM OUTPUT, MAX.	TOTAL SYSTEM OUTPUT, N+1	RECTIFIER MODULES CHECK TYPE REQ.	NO. MODULES REQUIRED	EXPANSION UNIT NUMBER
-54.4VDC@72.0A -54.4VDC@60.6A -54.4VDC@44.4A	-54.4VDC@60.0A -54.4VDC@50.5A -54.4VDC@37.0A	<input type="checkbox"/> RSJ48/12-Z <input type="checkbox"/> RSG48/10-Z <input type="checkbox"/> RGF48/7-Z	_____	X75-ES
+27.2VDC@75.0A +27.2VDC@75.0A	+27.2VDC@73.6A +27.2VDC@51.6A	<input type="checkbox"/> RSG24/18-Z <input type="checkbox"/> RSF24/13-Z	_____	

3. Check either option A or option B for DC distribution. For option A fill in the rating and code for each breaker to be installed. For option B fill in the number of fuses for each value required including spares.

☐ **OPTION A:** Up to 5 Breakers Total, maximum 30A each.
 1. Breaker ____ A, code ____ 3. Breaker ____ A, code ____ 5. Breaker ____ A, code ____
 2. Breaker ____ A, code ____ 4. Breaker ____ A, code ____

Enter rating & code above: 1A(F), 2.5A(G), 5A(H), 10A(I), 15A(J), 20A(K), 25A(L) & 30A(M), Not required(X).

☐ **OPTION B:** Enter the quantity for each rating of fuse that you require (maximum 10 total).
 Note that these are to be ordered as a separate line item using the listed part number and will be shipped as separate items:

½A (pt. no. 401-1500-0010) qty _____	2A (pt. no. 401-1500-0050) qty _____	12A (pt. no. 401-1500-0090) qty _____
¾A (pt. no. 401-1500-0020) qty _____	3A (pt. no. 401-1500-0060) qty _____	dummy (pt. no. 401-1500-0100) qty _____
1A (pt. no. 401-1500-0030) qty _____	5A (pt. no. 401-1500-0070) qty _____	
1½A (pt. no. 401-1500-0040) qty _____	10A (pt. no. 401-1500-0080) qty _____	

4. Check ☐ **Additional Temperature Probe (One supplied as standard)**

5. Send the completed form to the relevant UNIPOWER sales office and we will issue a configuration Model Number which will use the following format.









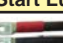
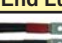
- System unit Option A: **X75-vv-A-bbbbbb-ST**
- System unit Option B: **X75-vv-B-ST**
- Expansion unit: **X75-ES** (voltage independent, no options available)

Key:
 vv = system voltage.
 b = breaker code, five characters total.
 S = SNMP fitted as standard. (always add suffix)
 T = additional Temp. probe. (add as suffix)

Optional decorative fascia: Order kit number 009-4005-0000, supplied loose for fitting after installation.

Rectifiers, fuses and other accessories are supplied as separate items from the main system unit and will be detailed separately in quotations, proposals and Sales Order documentation.

AC LINE CORDS, BATTERY & DC CABLE SETS

AC LINE CORD - 120V 15A	Part No.: 364-1412-0000	NEMA 5-15	IEC-C13
One cord per installed power module. Cord length 6ft (1.83m)			
AC LINE CORD - 240V 15A	Part No.: 364-1414-0000	NEMA 6-15	IEC-C13
One cord per installed power module. Cord length 6ft (1.83m)			
AC LINE CORD - 120/240V 15A	Part No.: 364-1421-0000	ROJ-LEADS	IEC-C13
One cord per installed power module. Cord length 6ft (1.83m) REQUIRES CUSTOMER SUPPLIED PLUG			
BATTERY CABLE KIT - 1 to 2 LUG 30"	Part No.: 775-1497-1230	Start Lug	End Lug
Pair of Black / Red #4AWG copper cable (600V 125A) 30" (76cm) with lug terminations and heat shrink. Hole size 0.25", tongue width 0.55", spacing 0.625".			
BATTERY CABLE KIT - 1 to 2 LUG 84"	Part No.: 775-1497-1284	Start Lug	End Lug
One pair Black / Red #4AWG copper cable (600V 125A) 84" (213cm) with lug terminations and heat shrink. Hole size 0.25", tongue width 0.55", spacing 0.625".			
DC LOAD CABLE KIT - 2 to 2 LUG 30"	Part No.: 775-1497-2230	Start Lug	End Lug
One pair Black / Red #4AWG copper cable (600V 125A) 30" (76cm) with lug terminations and heat shrink. Hole size 0.25", tongue width 0.55", spacing 0.625".		